



**HAL**  
open science

## Results and Predictive Factors After One Cryoablation for Persistent Atrial Fibrillation

Alexis Hermida, Momar Diouf, Maciej Kubala, Floriane Fay, Jacqueline Burtin, Pierre-Marc Lallemand, Otilia Buiciuc, Audrey Lieu, Mustafa Zaitouni, Christophe Beyls, et al.

► **To cite this version:**

Alexis Hermida, Momar Diouf, Maciej Kubala, Floriane Fay, Jacqueline Burtin, et al.. Results and Predictive Factors After One Cryoablation for Persistent Atrial Fibrillation. *American Journal of Cardiology*, 2021, 159, pp.65-71. 10.1016/j.amjcard.2021.07.052 . hal-03572218

**HAL Id: hal-03572218**

**<https://u-picardie.hal.science/hal-03572218v1>**

Submitted on 16 Oct 2023

**HAL** is a multi-disciplinary open access archive for the deposit and dissemination of scientific research documents, whether they are published or not. The documents may come from teaching and research institutions in France or abroad, or from public or private research centers.

L'archive ouverte pluridisciplinaire **HAL**, est destinée au dépôt et à la diffusion de documents scientifiques de niveau recherche, publiés ou non, émanant des établissements d'enseignement et de recherche français ou étrangers, des laboratoires publics ou privés.



Distributed under a Creative Commons Attribution - NonCommercial 4.0 International License

# **Results and Predictive Factors after One Cryoablation for Persistent Atrial Fibrillation**

Short title: Cryo-pulmonary vein isolation for persistent atrial fibrillation

Alexis Hermida<sup>1</sup>, MD, Momar Diouf<sup>2</sup>, Maciej Kubala<sup>1</sup>, MD, pHD, Floriane Fay<sup>1</sup>, MD, Jacqueline Burtin<sup>1</sup>, MD, Pierre-Marc Lallemand<sup>1</sup>, MD, Otilia Buiciuc<sup>1</sup>, MD, Audrey Lieu<sup>1</sup>, MD, Mustafa Zaitouni<sup>1</sup>, MD, Christophe Beyls, MD, and Jean-Sylvain Hermida<sup>1</sup>, MD

<sup>1</sup>Cardiac Arrhythmia Service, Amiens-Picardie University Hospital, Amiens, France

<sup>2</sup> Biostatistics Unit, Clinical Research and Innovation Directorate, Amiens-Picardie University Hospital, Amiens, France

<sup>1,2</sup>This author takes responsibility for all aspects of the reliability and freedom from bias of the data presented and their discussed interpretation.

Address for correspondence:

Alexis Hermida

Amiens-Picardie University Hospital

1 Rond-Point du Pr Christian CABROL

80054 AMIENS cedex 1

Phone: +33 322 45 58 75

Fax: +33 322 45 56 58

Email: a.hermida.jarry@gmail.com

Word Count: 2877

Declarations of interest: none

**ABSTRACT**

Cryoballoon pulmonary vein isolation (PVI) for persistent atrial fibrillation (AF) ablation is an increasingly used strategy. We aimed to determine the results and predictors of arrhythmia recurrence after a single procedure of cryoballoon PVI for patients with persistent and long-standing persistent AF. We included all consecutive patients who underwent cryoballoon PVI for the treatment of persistent symptomatic drug-refractory AF since 2012. All patients were prospectively followed to detect the recurrence of atrial tachyarrhythmia (ATa). Predictors of recurrence were assessed. Cryoballoon PVI was performed on 399 patients with persistent AF, amongst whom 52 (13%) had long-standing persistent AF. Patients with long-standing persistent AF had a significantly larger left atrium than those with persistent AF. A 28-mm cryoballoon was used for 322 patients (93%). In total, 359 patients (90%) completed the 12-month follow-up visit and the median follow-up was 24 months (IQR 43-13). The two-year probability of freedom from ATa recurrence was 51% for persistent AF and 27% for long-standing persistent AF. Long-standing persistent AF and left atrial area/volume were independent predictors of ATa recurrence. Ten patients (2.5%) experienced phrenic nerve palsy, one tamponade (0.25%), two stroke (0.5%), two pericardial effusions (0.5%), and five vascular complications (1.25%). In conclusion, two-year ATa-free survival rates were 51 and 27% for persistent and long-standing persistent AF patients, respectively. Complications were rare. Long-standing persistent AF and left-atrial area/volume were predictors of recurrence.

**KEYWORDS:** persistent atrial fibrillation, cryoballoon pulmonary vein isolation

## **INTRODUCTION**

Standalone pulmonary vein isolation (PVI) as the first step of a strategy for the ablation of persistent atrial fibrillation (AF) may be an option, as the addition of linear ablation or the ablation of complex fractionated electrograms is not superior to PVI alone.<sup>1</sup> The proportion of patients in sinus rhythm after one procedure of cryoballoon PVI for persistent AF ranges from 50 to 72%.<sup>2-16</sup> The interpretation of the results of these studies is limited by the short follow-up of under two years, except for one, which reached 37 months.<sup>11</sup> Moreover, only two studies have followed large cohorts of 609<sup>14</sup> and 486 patients<sup>10</sup> and provided results for patients with long-standing persistent AF. Given the recurrence rate, it would be useful to identify long-term predictors of recurrence before performing the procedure. Data concerning such predictors have been published<sup>2,3,6,7,9,11,12,14,15</sup> but only three studies included left atrium dimension.<sup>11,14,15</sup> Here, we evaluated the results and predictors of recurrence after a long follow-up of two years for a large cohort of patients who were treated for persistent and long-standing persistent AF by cryoablation.

## **METHOD**

We prospectively included all consecutive patients who underwent cryo-PVI for the treatment of persistent drug-refractory AF from the introduction of second generation cryoballoon ablation to the Amiens University Hospital in September 2012 to November 2019. Patients provided their signed informed consent to participate in the registry and the study was approved by the local ethics committee. Data files of the registry were declared to and authorized by the French data protection committee (Commission Nationale Informatique et Liberté, CNIL) (PI2020\_843\_0120).

The primary objectives of the study were to assess the success rates and complication rates after one cryo-PVI procedure. The secondary objective was to establish the long-term predictive factors of ATa.

Patients were included if they presented symptomatic persistent AF, documented by 12-lead ECG, refractory to at least one class I or III antiarrhythmic drug. AF was classified according to the 2020 ESC Guidelines for the management of AF.<sup>17</sup> The diagnosis-to-ablation time was defined by the time between the first episode of AF and ablation. Exclusion criteria were (i) prior left atrial (LA) ablation, (ii) LA tachycardia at the time of cryoablation, (iii) having a prosthetic heart valve, (iv) being a minor (< 18 years old), and (v) no follow-up after the cryo-PVI procedure.

LA area was measured during echocardiography in a four-chamber view. LA volume was obtained from multi-detector computed tomography and segmentation by AW VolumeShare 5 software (General Electric Company, Fairfield, Connecticut, USA). The first centimeter of each pulmonary vein and the LA appendage were included in the determination of LA volume. Hypertension was defined as repeated office or out-of-office systolic blood pressure values  $\geq 140$  mmHg and/or diastolic blood pressure values  $\geq 90$  mmHg<sup>18</sup> prior to treatment for hypertension.

Cryoballoon ablations were preceded by at least three weeks of treatment with an oral anticoagulant and then contrast-enhanced multi-slice CT of the left atrium. The cryo-PVI procedure has been described in detail elsewhere.<sup>19</sup> Briefly, access to the left atrium was gained after fluoroscopy-guided transseptal puncture (SL1, St Jude Medical).. Only one four-minute application was performed with a second- or third generation cryoballoon (the 23- or 28-mm Advance balloon, Cryocath, Medtronic, Dublin, Republic of Ireland). An intraluminal catheter (Achieve, Medtronic) was used for all procedures. A second cryoapplication was performed (to achieve a complete block) only if there was persistent atriovenous conduction.

A quadripolar catheter was used to continuously pace the phrenic nerve adjacent to the superior vena cava during cryoablation over the right pulmonary veins. Cryoablation was discontinued immediately if there was loss of diaphragmatic contraction to avoid right phrenic nerve palsy. A temporary subcutaneous venous figure-of-eight suture was used for all patients to achieve hemostasis.

Oral anticoagulation was maintained for patients treated with a vitamin K antagonist. Oral anticoagulation was withdrawn 48 h before the procedure for patients treated with a direct oral anticoagulant (until October 2017) or maintained (from November 2017 onwards). For all patients, heparin was administered as an initial bolus after the transseptal puncture and then administered continuously to maintain the target activated clotting time ( $> 300$  s).

Data collected during the procedure included the duration of the time to effect (TTE), minimal temperature reached during application in each PV, cumulative duration of cryo-application in each PV, number of cryo-applications for each PV, and the duration of the time under fluoroscopy and fluoroscopy exposure.

All adverse events occurring during the procedure or within the following month were recorded and described. Vascular complications included vascular pseudo aneurysms, arteriovenous fistulae, hematomas, and puncture-side hemorrhages. After ablation, antiarrhythmic drugs were maintained for at least the blanking period of three months. Anticoagulants were continued for at least the first three months.

Patients were followed up in our institution at 3, 6, and 12 months with a physical examination, questions about arrhythmia-related symptoms, a 12-lead ECG, and 24 h-Holter monitoring. After the first year, patients were followed up by their cardiologists at least once a year with a 12-lead ECG and 24 h-Holter monitoring. Any symptoms following ablation were evaluated by 12-lead ECG and 24 h-Holter monitoring. Previously implanted

pacemakers or dual-chamber implantable cardioverted defibrillators were assessed at each visit.

The primary endpoint was the recurrence of atrial tachyarrhythmia (ATa), defined as a documented episode of AF, LA flutter, or atrial tachycardia (whether symptomatic or not) lasting for 30 s or more on any cardiac rhythm recording made during a planned or symptom-driven consultation after the three-month blanking period. Recurrences of right atrial flutter (confirmed by an electrophysiological study) were not included.

The secondary endpoint was the frequency of complications of any type during the procedure or within the following month. Continuous variables are expressed as the mean  $\pm$  standard deviation (SD) or median [interquartile range (IQR)] for normally and non-normally distributed data, respectively, and were compared using Student's *t*-test or the Mann–Whitney–Wilcoxon test, as appropriate. Categorical variables are expressed as the frequency (percentage) and were compared using a chi-squared test or Fisher's exact test.

The cumulative probability of ATa-free survival was estimated using the Kaplan–Meier method. Survival curves were compared using the Log-rank test. Cox proportional hazard models were used to identify factors associated with ATa recurrence, with an estimation of the hazard ratios (HRs) and 95% confidence intervals. Variables with a *p*-value  $< 0.10$  in univariate analysis were included in a multivariate Cox model. All tests were two-tailed and the limit for statistical significance was set at  $P < 0.05$ . Statistical analysis was performed using SPSS for Windows software, version 22.0 (SPSS Inc., Chicago, IL, USA). The only missing data concerned the LA area (27%), procedure time (6%), balloon in/out (5%), fluoroscopy time (9%), fluoroscopy exposure (11%) and cryotherapy time (8%).

## RESULTS

In total, 417 patients met the inclusion criteria (Table 1). Two patients were in LA flutter during the procedure, seven were lost to follow-up immediately after the procedure, and nine had a prosthetic heart valve; all 18 were excluded. Cryo-PVI was performed on 399 patients with persistent AF (mean age:  $61 \pm 9$  years; males = 316, 79%). Among them, 52 (13%) had long-standing persistent AF (Table 1). The mean time between the first AF episode and ablation (diagnosis to ablation time) was  $17 \pm 19$  months.

Patients with long-standing persistent AF had a significantly larger left atrium than patients with persistent AF: area:  $30 \pm 4$  vs.  $26 \pm 5$  cm<sup>2</sup> ( $p < 0.001$ ), volume:  $197 \pm 37$  vs.  $161 \pm 41$  ml ( $p < 0.001$ ), and indexed volume:  $89 \pm 16$  vs.  $77 \pm 20$  ml/m<sup>2</sup> ( $p < 0.001$ ).

Eighty-six persistent AF patients (25%) were in sinus rhythm at the beginning of the procedure (Supplementary Table 1). A 28-mm cryoballoon was used for 322 patients (93%). A left PV block was achieved for all patients. A right superior PV block was achieved for 394 patients (99%) and a right inferior PV block for 396 (99%).

We observed 10 cases (2.5%) of unresolved phrenic nerve palsy at discharge, one of tamponade (0.25%), two of stroke (0.5%), two of pericardial effusion (0.5%), and five of vascular complications (1.25%). There was no procedure-related death. There was no diminution/attenuation of diaphragm contractions in any of the 10 phrenic nerve palsy cases. The minimum temperature for these patients was  $52 \pm 6^\circ\text{C}$  (vs.  $48 \pm 8^\circ\text{C}$ ,  $p = 0.12$ ) for RIPV and  $51 \pm 7^\circ\text{C}$  (vs.  $50 \pm 10^\circ\text{C}$ ,  $p = 0.83$ ) for RSPV. Eight patients had persistent phrenic nerve palsy at the first follow up visit and only one at the one year follow up. There was no significant difference in the duration of the procedure between the two patients who experienced stroke and those who did not. There were no long-term complications directly related to the cryoablation procedure identified during follow up, in particular, atrio-oesophageal fistulae. Eleven patients died during follow-up (3 cancer, 4 terminal heart failure,



1 car accident, 1 stroke, 2 no information). Three patients experienced a late thromboembolic event.

All patients completed the six-month follow-up visit and 359 (90%) the 12-month follow-up visit. The median follow-up was 24 months (IQR 43-13). Among all patients, ATa recurred for 211 (53%) within a mean of  $12 \pm 14$  months (Figure 2). Seventy-one patients (34%) relapsed after 12 months. The 1-, 2-, and 3-year probabilities of freedom from ATa recurrence were 63% [60; 65], 48% [45; 51], and 38% [35; 42], respectively. Fifty-six patients (30%) without recurrence were still on an antiarrhythmic drug at last follow-up (31 on Amiodarone, 18 on Flecainide, 7 on Sotalol). Among the 347 patients with persistent AF, the 1-, 2- and 3-year probabilities of freedom from ATa recurrence were 66% [64; 69], 51% [48; 54], and 42% [38; 45], respectively. Among the 52 patients with long-standing persistent AF, the 1-, 2- and 3-year probabilities of freedom from ATa recurrence were 40% [33; 47], 27% [20; 33], and 18% [10; 25], respectively.

The results of the univariate analysis concerning the risk of ATa recurrence are shown in Table 2. After multivariate analysis that included BMI, long-standing persistent AF, hypertension, coronary artery disease, CHA<sub>2</sub>DS<sub>2</sub>-VASc score, and LA area, the predictors of recurrence of ATa were long-standing persistent AF (HR = 1.83, CI [1.22; 2.75], p = 0.003) and LA area (HR = 1.05, CI [1.02; 1.09], p = 0.002). After multivariate analysis that included the same variables but in which LA area was replaced with LA volume, the predictors of recurrence of ATa were long-standing persistent AF (HR = 1.68, CI [1.16; 2.44], p = 0.006) and LA volume (HR = 1.006, CI [1.002; 1.009], p = 0.001).

Among the 211 patients who had a recurrence, 139 (66%) underwent at least one repeat procedure (Figure 2). Patients who had a recurrence of paroxysmal AF underwent radiofrequency (RF) repeat PVI. Patients who had a recurrence of persistent AF or left atrial flutter underwent linear RF ablation. During the first repeat procedure, 80 patients (58%) had

at least one reconnected PV. The mean number of reconnected PVs was 0.94. Along these 139 patients, 104 (75%) had not experienced a recurrence at the last follow-up. Finally, 292 patients (188 after a single procedure and 104 after repeat procedures, 73%) were free of recurrence at the last follow-up.

## DISCUSSION

In this large cohort, we establish that cryo-PVI alone for persistent AF is a safe and effective strategy. Long-term predictors of recurrence were long-standing persistent AF and LA dimension.

Among the 347 patients with persistent AF, the 2- and 3-year probabilities of freedom from ATa recurrence were 51% and 42%. Sawhney et al.<sup>14</sup> recently published a long-term follow-up study of 487 patients with persistent AF, with a success rate of 64% at 24 months after a single cryoballoon PVI procedure. The difference from our reported success rate of 51% at two years, while all patients were off-AADs (vs. 30% on AADs in our study), may be explained by more evolved AF in our study, with a mean atrial area of 26 cm<sup>2</sup>. Four other studies with a long follow-up of 22<sup>6</sup>, 20<sup>5</sup>, and 18 months<sup>10,15</sup> reported recurrence rates similar to ours of 56, 50, 51.5, and 53%, respectively. Other studies published on this subject<sup>2-4,7-9,12,13,16</sup> reported results after short-term follow-up of approximately one year, with logically better success rates than ours (from 54.8 to 72%, Supplementary Table 2). An alternative strategy for persistent atrial fibrillation ablation is to add substrate modification to PVI. In the metanalysis of Clarnette et al.<sup>20</sup>, the single-procedure success rate was 46% for both PVI plus complex fractionated atrial electrograms ablation and PVI ablation plus linear lesions, within the same range as our success rate

Studies of Tondo et al.<sup>10</sup> and Sawhney et al.<sup>14</sup> provide data about one procedure of cryoballoon PVI for long-standing persistent AF. Tondo et al.<sup>10</sup> reported a probability of one-

year freedom from AF recurrence of 63.1% for 52 patients with long-standing persistent AF. Sawhney<sup>14</sup> reported an arrhythmia-free survival rate of 57% at 24 months follow-up. We report worse results, with only 27% of patients free of ATa after two years. This difference could be explained by the longer follow-up in our study (vs. Tondo). Moreover, the mean LA volume was 74.8 ml in the study of Tondo et al., whereas it was 165 ml in ours, which confirms that we included more evolved patients. In any case, the difference cannot be explained by the rate of AAD maintenance, which was similar between the study of Tondo and ours. Our results lead to two conclusions. First, cryoballoon PVI as an index procedure for long-standing persistent AF should, in most cases, be the first step of a stepwise approach, which should include (an)other procedure(s). Second, our results provide a supplementary argument for the strategy of early intervention to improve the outcome after AF ablation. Kirchhof et al.<sup>24</sup> recently showed that early rhythm-control therapy was associated with a lower risk of adverse cardiovascular outcomes.

In the meta-analysis of Andrade<sup>25</sup>, as well as in the Fire and Ice trial<sup>26</sup>, complication rates of cryoballoon ablation were found to be very low. The phrenic-nerve palsy rate was 4.73% and 2.7%, respectively. Our results are in the same range, with a rate of 2.5%. In our study, 0.5% of patients had strokes, 0.25% tamponade, and 1.25% vascular complications. Our results are very close to those of the aforementioned studies, which showed 0.57% and 0.5% thromboembolic events, 0.47 and 0.3% tamponade, and 1.79% and 1.9% vascular complications, respectively.

After multivariate analysis, we found long-standing persistent AF and LA area/LA volume to be predictors of recurrence. It is logical that we found the LA area/volume to be predictors of recurrence, as published studies already identified LA diameter<sup>14,15</sup> and LA area<sup>11</sup> as predictors. Only two studies<sup>2,11</sup> included LA area (measured in echocardiography) in their Cox Model and none included LA volume, which is less subject to inter-observer

variability.<sup>27,28</sup> Long-standing persistent AF has already been described as a strong predictive factor of recurrence. Thus, this item is included in the MB LATER<sup>29</sup> and CAAP AF<sup>30</sup> scores. Similarly, diagnosis-to-ablation time<sup>3,7,11,14</sup> has been shown to be predictor of recurrence after cryoballoon PVI for persistent AF, in numerous studies. Relapse during the blanking period<sup>2,3,9,12</sup> is widely cited as an independent predictor, but we chose not to test it in our study because these data are available only after the decision to perform the procedure. It has no clinical relevance in the decision of whether to perform the procedure nor how to perform the first procedure.

This was a single-center study, and its conclusion can therefore not be extrapolated to other centers. However, we present the third largest cohort of cryoballoon ablation for persistent AF. Our protocol of atrial arrhythmia monitoring after cryo-PVI does not include continuous monitoring but corresponds to that of other studies and to real-life practice. Given the fact that 30% of the patients without recurrence were still on antiarrhythmic drugs at the last follow-up, we cannot exclude that the success rates described here are due to the combined effects of the cryo-PVI and continued medication. The measurement of the LA area in echocardiography is subject to inter-observer variability and conclusions based on these data need to be made with caution. However, volume measurements by tomography are readily available but rarely mentioned in published studies. They represent an original parameter that is less subject to imprecision.

In conclusion, two-year ATa-free survival rates were 51 and 27% for persistent and long-standing persistent AF patients, respectively. Complications were rare. The independent long-term predictors of recurrence were long-standing persistent AF and LA area/volume. Treatment by cryo-PVI for persistent AF appears to be reasonable, but insufficient for long-standing persistent AF.

**ACKNOWLEDGEMENTS**

The authors thank Helene Duquenne for her help with the data acquisition.

**FUNDING SOURCES**

No funding sources.

## REFERENCES

1. Verma A, Jiang CY, Betts TR, Chen J, Deisenhofer I, Mantovan R, Macle L, Morillo CA, Haverkamp W, Weerasooriya R, Albenque JP, Nardi S, Menardi E, Novak P, Sanders P, Investigators SAI. Approaches to catheter ablation for persistent atrial fibrillation. *N Engl J Med* 2015;372:1812-1822.
2. Koektuerk B, Yorgun H, Hengeoerz O, Turan CH, Dahmen A, Yang A, Bansmann PM, Gorr E, Hoppe C, Turan RG, Horlitz M. Cryoballoon Ablation for Pulmonary Vein Isolation in Patients With Persistent Atrial Fibrillation: One-Year Outcome Using Second Generation Cryoballoon. *Circulation Arrhythmia and Electrophysiol* 2015;8:1073-1079.
3. Ciconte G, Ottaviano L, de Asmundis C, Baltogiannis G, Conte G, Sieira J, Di Giovanni G, Saitoh Y, Irfan G, Mugnai G, Storti C, Montenero AS, Chierchia GB, Brugada P. Pulmonary vein isolation as index procedure for persistent atrial fibrillation: One-year clinical outcome after ablation using the second-generation cryoballoon. *Heart Rhythm* 2015;12:60-66.
4. Aryana A, Singh SM, Kowalski M, Pujara DK, Cohen AI, Singh SK, Aleong RG, Banker RS, Fuenzalida CE, Prager NA, Bowers MR, D'Avila A, O'Neill PG. Acute and Long-Term Outcomes of Catheter Ablation of Atrial Fibrillation Using the Second-Generation Cryoballoon versus Open-Irrigated Radiofrequency: A Multicenter Experience. *Journal of cardiovascular electrophysiology* 2015;26:832-839.
5. Guhl EN, Siddoway D, Adelstein E, Voigt A, Saba S, Jain SK. Efficacy of Cryoballoon Pulmonary Vein Isolation in Patients With Persistent Atrial Fibrillation. *J Cardiovasc Electrophysiol* 2016;27:423-427.
6. Tscholl V, Lsharaf AK, Lin T, Bellmann B, Biewener S, Nagel P, Suhail S, Lenz K, Landmesser U, Roser M, Rillig A. Two years outcome in patients with persistent atrial fibrillation after pulmonary vein isolation using the second-generation 28-mm cryoballoon. *Heart Rhythm* 2016;13:1817-1822.
7. Boveda S, Providencia R, Defaye P, Pavin D, Cebron JP, Anselme F, Halimi F, Khoueiry Z, Combes N, Combes S, Jacob S, Albenque JP, Sousa P. Outcomes after cryoballoon or radiofrequency ablation for persistent atrial fibrillation: a multicentric propensity-score matched study. *J Int Cardiac Electrophysiol* 2016;47:133-142.

8. Lemes C, Wissner E, Lin T, Mathew S, Deiss S, Rillig A, Heeger C, Wohlmuth P, Reissmann B, Tilz R, Ouyang F, Kuck KH, Metzner A. One-year clinical outcome after pulmonary vein isolation in persistent atrial fibrillation using the second-generation 28 mm cryoballoon: a retrospective analysis. *Europace : European pacing, arrhythmias, and cardiac electrophysiology* 2016;18:201-205.
9. Straube F, Hartl S, Dorwarth U, Wanklerl M, Bunz B, Ebersberger U, Hoffmann E. Cryoballoon ablation for persistent atrial fibrillation - Large single-center experience. *Journal of cardiology* 2016;68:492-497.
10. Tondo C, Iacopino S, Pieragnoli P, Molon G, Verlato R, Curnis A, Landolina M, Allocca G, Arena G, Fassini G, Sciarra L, Luzi M, Manfrin M, Padeletti L, ClinicalService SPI. Pulmonary vein isolation cryoablation for patients with persistent and long-standing persistent atrial fibrillation: Clinical outcomes from the real-world multicenter observational project. *Heart Rhythm* 2018;15:363-368.
11. Akkaya E, Berkowitsch A, Zaltsberg S, Greiss H, Hamm CW, Sperzel J, Neumann T, Kuniss M. Second-generation cryoballoon ablation for treatment of persistent atrial fibrillation: Three-year outcome and predictors of recurrence after a single procedure. *J Cardiovasc Electrophysiol* 2018;29:38-45.
12. Yalin K, Abdin A, Lyan E, Sawan N, Liosis S, Elsner C, Jobs A, Bruggemann B, Koester J, Eitel I, Eitel C, Tilz RR. Safety and efficacy of persistent atrial fibrillation ablation using the second-generation cryoballoon. *Clin Research in Cardiol* 2018;107:570-577.
13. Boveda S, Metzner A, Nguyen DQ, Chun KRJ, Goehl K, Noelker G, Deharo JC, Andrikopoulos G, Dahme T, Lellouche N, Defaye P. Single-Procedure Outcomes and Quality-of-Life Improvement 12 Months Post-Cryoballoon Ablation in Persistent Atrial Fibrillation: Results From the Multicenter CRYO4PERSISTENT AF Trial. *JACC Clin Electrophysiol* 2018;4:1440-1447.
14. Sawhney V, Schilling RJ, Providencia R, Cadd M, Perera D, Chatha S, Mercer B, Finlay M, Halimi F, Pavin D, Anselme F, Cebon JP, Chun J, Schmidt B, Defaye P, Dhillon G, Boveda S, Albenque JP, Tayebjee M, de Asmundis C, Chierchia G, Hunter RJ. Cryoablation for persistent and longstanding

persistent atrial fibrillation: results from a multicentre European registry. *Europace : European pacing, arrhythmias, and cardiac electrophysiology* 2019.

**15.** Reissmann B, Plenge T, Heeger CH, Schluter M, Wohlmuth P, Fink T, Rottner L, Tilz RR, Mathew S, Lemes C, Maurer T, Luker J, Sultan A, Bellmann B, Goldmann B, Ouyang F, Kuck KH, Metzner A, Steven D, Rillig A. Predictors of freedom from atrial arrhythmia recurrence after cryoballoon ablation for persistent atrial fibrillation: A multicenter study. *J Cardiovasc Electrophysiol* 2019;30:1436-1442.

**16.** Su WW, Reddy VY, Bhasin K, Champagne J, Sangrigoli RM, Braegelmann KM, Kueffer FJ, Novak P, Gupta SK, Yamane T, Calkins H, Investigators SPA. Cryoballoon Ablation of Pulmonary Veins for Persistent Atrial Fibrillation: Results From the Multicenter STOP Persistent AF Trial. *Heart Rhythm* 2020.

**17.** Hindricks G, Potpara T, Dagres N, Arbelo E, Bax JJ, Blomstrom-Lundqvist C, Boriani G, Castella M, Dan GA, Dilaveris PE, Fauchier L, Filippatos G, Kalman JM, La Meir M, Lane DA, Lebeau JP, Lettino M, Lip GYH, Pinto FJ, Thomas GN, Valgimigli M, Van Gelder IC, Van Putte BP, Watkins CL, Group ESCSD. 2020 ESC Guidelines for the diagnosis and management of atrial fibrillation developed in collaboration with the European Association for Cardio-Thoracic Surgery (EACTS). *Eur Heart J* 2021;42:373-498.

**18.** Williams B, Mancia G, Spiering W, Agabiti Rosei E, Azizi M, Burnier M, Clement DL, Coca A, de Simone G, Dominiczak A, Kahan T, Mahfoud F, Redon J, Ruilope L, Zanchetti A, Kerins M, Kjeldsen SE, Kreutz R, Laurent S, Lip GYH, McManus R, Narkiewicz K, Ruschitzka F, Schmieder RE, Shlyakhto E, Tsioufis C, Aboyans V, Desormais I, Authors/Task Force M. 2018 ESC/ESH Guidelines for the management of arterial hypertension: The Task Force for the management of arterial hypertension of the European Society of Cardiology and the European Society of Hypertension: The Task Force for the management of arterial hypertension of the European Society of Cardiology and the European Society of Hypertension. *J Hyperten* 2018;36:1953-2041.



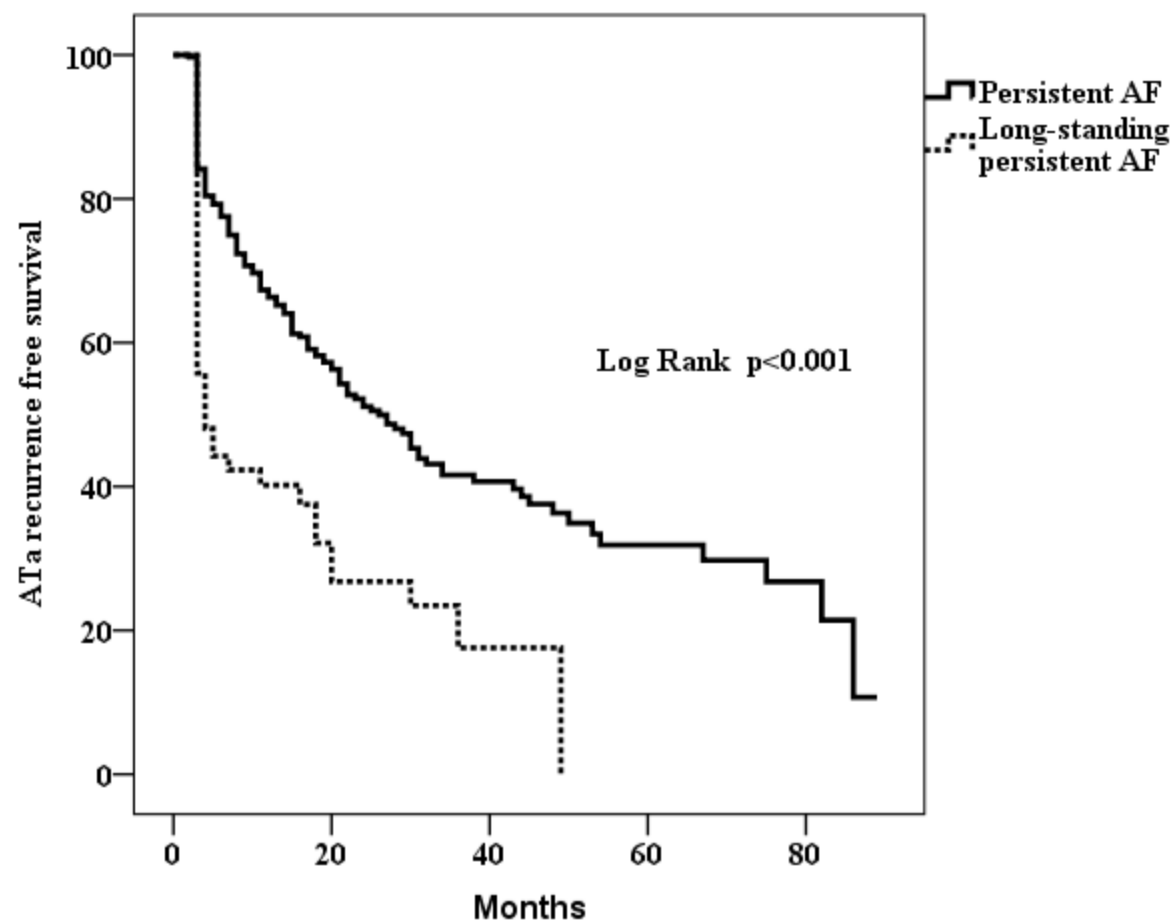
- 19.** Traulle S, Miyazaki S, Mouquet V, Kubala M, Hermida JS. The anatomic impact of sequential, additional, ostial radiofrequency ablation following pulmonary vein cryo-isolation. *PACE* 2012;35:1420-1427.
- 20.** Clarnette JA, Brooks AG, Mahajan R, Elliott AD, Twomey DJ, Pathak RK, Kumar S, Munawar DA, Young GD, Kalman JM, Lau DH, Sanders P. Outcomes of persistent and long-standing persistent atrial fibrillation ablation: a systematic review and meta-analysis. *Europace* 2018;20:f366-f376.
- 21.** Kuniss M, Greiss H, Pajitnev D, Akkaya E, Deubner N, Hain A, Bodammer L, Berkowitsch A, Chierchia GB, Hamm CW, Neumann T. Cryoballoon ablation of persistent atrial fibrillation: feasibility and safety of left atrial roof ablation with generation of conduction block in addition to antral pulmonary vein isolation. *Europace* 2017;19:1109-1115.
- 22.** Su WW, Alzubaidi M, Tseng R, Jebaily N, Lin YJ, Wang PJ. Novel usage of the cryoballoon catheter to achieve large area atrial substrate modification in persistent and long-standing persistent atrial fibrillation. *J Int Cardiac Electrophysiol* 2016;46:275-285.
- 23.** Bisignani A, Overeinder I, Kazawa S, Iacopino S, Cecchini F, Miraglia V, Osorio TG, Boveda S, Bala G, Mugnai G, Monaco C, Stroker E, Brugada P, Sieira J, Galli A, de Asmundis C, Chierchia GB. Posterior box isolation as an adjunctive ablation strategy with the second-generation cryoballoon for paroxysmal atrial fibrillation: a comparison with standard cryoballoon pulmonary vein isolation. *Journal of interventional cardiac electrophysiology : an international journal of arrhythmias and pacing* 2020.
- 24.** Kirchhof P, Camm AJ, Goette A, Brandes A, Eckardt L, Elvan A, Fetsch T, van Gelder IC, Haase D, Haegeli LM, Hamann F, Heidbuchel H, Hindricks G, Kautzner J, Kuck KH, Mont L, Ng GA, Rekosz J, Schoen N, Schotten U, Suling A, Taggeselle J, Themistoclakis S, Vettorazzi E, Vardas P, Wegscheider K, Willems S, Crijns H, Breithardt G, Investigators E-AT. Early Rhythm-Control Therapy in Patients with Atrial Fibrillation. *N Engl J Med* 2020;383:1305-1316.

25. Andrade JG, Khairy P, Guerra PG, Deyell MW, Rivard L, Macle L, Thibault B, Talajic M, Roy D, Dubuc M. Efficacy and safety of cryoballoon ablation for atrial fibrillation: a systematic review of published studies. *Heart Rhythm* 2011;8:1444-1451.
26. Kuck KH, Brugada J, Furnkranz A, Metzner A, Ouyang F, Chun KR, Elvan A, Arentz T, Bestehorn K, Pocock SJ, Albenque JP, Tondo C, Fire, Investigators ICE. Cryoballoon or Radiofrequency Ablation for Paroxysmal Atrial Fibrillation. *N Engl J Med* 2016;374:2235-2245.
27. Ratajczak P, Slawinska A, Martynowska-Rymer I, Strzesniewski P, Rusak G. Anatomical Evaluation of the Pulmonary Veins and the Left Atrium Using Computed Tomography Before Catheter Ablation: Reproducibility of Measurements. *Polish J Radiol* 2016;81:228-232.
28. Mahabadi AA, Samy B, Seneviratne SK, Toepker MH, Bamberg F, Hoffmann U, Truong QA. Quantitative assessment of left atrial volume by electrocardiographic-gated contrast-enhanced multidetector computed tomography. *Journal of cardiovascular computed tomography* 2009;3:80-87.
29. Mujovic N, Marinkovic M, Markovic N, Shantsila A, Lip GY, Potpara TS. Prediction of very late arrhythmia recurrence after radiofrequency catheter ablation of atrial fibrillation: The MB-LATER clinical score. *Scientific Reports* 2017;7:40828.
30. Winkle RA, Jarman JW, Mead RH, Engel G, Kong MH, Fleming W, Patrawala RA. Predicting atrial fibrillation ablation outcome: The CAAP-AF score. *Heart Rhythm* 2016;13:2119-2125.

**FIGURE LEGENDS**

Figure 1. ATa-free survival for persistent *vs.* long-standing persistent AF.

Figure 2. Results after one cryo-PVI and repeat procedures.



Persistent AF	347	117	41	16	5
Long-standing persistent AF	52	11	2	0	

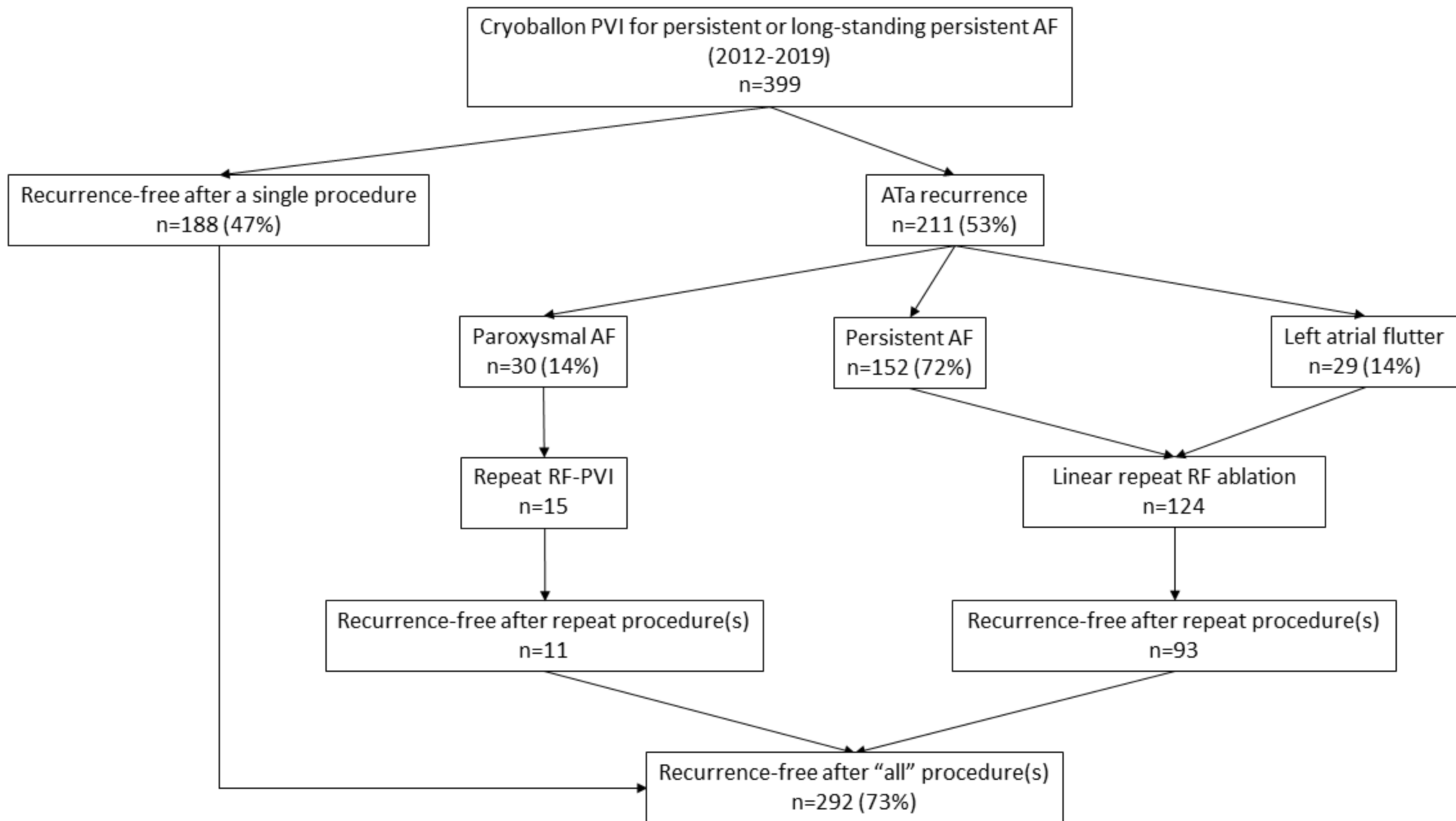


Table 1. Patient characteristics at baseline

Variable	All patients	Persistent AF (n = 347)	Long-Standing Persistent AF (n = 52)	P
Age (years $\pm$ sd)	61 $\pm$ 9	60 $\pm$ 9	61 $\pm$ 9	0.82
Men	316 (79%)	272 (78%)	44 (85%)	0.36
Height (m)	1.75 $\pm$ 0.1	1.75 $\pm$ 0.1	1.76 $\pm$ 0.1	0.46
Weight (kg)	91 $\pm$ 18	90 $\pm$ 17	98 $\pm$ 18	<b>0.002</b>
Body mass index (kg/m <sup>2</sup> )	30 $\pm$ 5	29 $\pm$ 5	32 $\pm$ 5	<b>0.002</b>
Body surface area (m <sup>2</sup> )	2.1 $\pm$ 0.2	2.1 $\pm$ 0.2	2.2 $\pm$ 0.2	<b>0.003</b>
Diagnosis-to-ablation time (months)	17 $\pm$ 19	16 $\pm$ 20	28 $\pm$ 16	<b>&lt; 0.001</b>
Number of cardioversions	0.8 $\pm$ 0.9	0.7 $\pm$ 0.9	1.2 $\pm$ 0.9	<b>0.001</b>
Clearance (ml/min)	81 $\pm$ 21	81 $\pm$ 21	83 $\pm$ 26	0.51
Clearance < 60ml/min	61 (15%)	51 (15%)	10 (19%)	0.41
Hypertension	193 (48%)	164 (47%)	29 (56%)	0.30
Diabetes mellitus	52 (13%)	44 (13%)	8 (15%)	0.66
Stroke	28 (7%)	25 (7%)	3 (6%)	1
Heart failure	78 (19%)	67 (19%)	11 (21%)	0.71
Coronary artery disease	46 (11%)	38 (11%)	8 (15%)	0.35
Absence of SHD	259 (65%)	228 (66%)	31 (60%)	0.44
Antiarrhythmic drug therapy	232 (58%)	208 (60%)	24 (46%)	0.07
CHA <sub>2</sub> DS <sub>2</sub> -VASc score	1.7 $\pm$ 1.4	1.7 $\pm$ 1.4	1.7 $\pm$ 1.5	
0	96 (24%)	86 (25%)	10 (19%)	
1	115 (29%)	97 (28%)	18 (35%)	
2	77 (19%)	68 (20%)	9 (17%)	
3	64 (16%)	53 (15%)	11 (21%)	0.07
4	33 (8%)	31 (9%)	2 (4%)	
$\geq 5$	14 (4%)	12 (3%)	2 (4%)	
Previous cavotricuspid isthmus ablation	29 (7%)	26 (7%)	3 (6%)	1
<b>LA and LV parameters</b>				
LA area (cm <sup>2</sup> )	26 $\pm$ 5	26 $\pm$ 5	30 $\pm$ 4	<b>&lt; 0.001</b>
LA volume (ml)	165 $\pm$ 42	161 $\pm$ 41	197 $\pm$ 37	<b>&lt; 0.001</b>
LA volume Index (ml/m <sup>2</sup> )	78 $\pm$ 20	77 $\pm$ 20	89 $\pm$ 16	<b>&lt; 0.001</b>
LVEF (%)	54 $\pm$ 12	54 $\pm$ 12	53 $\pm$ 12	1
LVEF $\leq$ 40%	74 (18%)	62 (18%)	12 (23%)	0.68
<b>PV anatomy</b>				
LSPV diameter (mm)	19 $\pm$ 2	19 $\pm$ 2	20 $\pm$ 2	0.08
LIPV diameter (mm)	17 $\pm$ 2	17 $\pm$ 2	18 $\pm$ 2	0.02
RSPV diameter (mm)	20 $\pm$ 2	20 $\pm$ 2	20 $\pm$ 2	0.06
RIPV diameter (mm)	19 $\pm$ 2	19 $\pm$ 2	20 $\pm$ 3	0.004
LCT	63 (16%)	54 (16%)	9 (17%)	0.69
Accessory vein	51 (13%)	48 (14%)	3 (6%)	0.12

AF: atrial fibrillation, LA: left atrium, LCT: left common trunk of pulmonary veins, LIPV: left inferior pulmonary vein, LSPV: left superior pulmonary vein, LVEF: left ventricular ejection fraction, LV: left ventricle, PV: pulmonary veins, RIPV: right inferior pulmonary vein, RSPV: right superior pulmonary vein, SHD: structural heart disease

Table 2. Predictive factors of ATa recurrence after univariate analysis

Variable	No ATa recurrence (n = 188)	ATa recurrence (n = 211)	HR univariate analysis CI [95% CI]	p
Age (years $\pm$ sd)	60 $\pm$ 9	61 $\pm$ 9	1.01 [0.99; 1.02]	0.18
Men	146 (78%)	170 (81%)	0.96 [0.68; 1.35]	0.81
Height (m)	1.76 $\pm$ 0.1	1.75 $\pm$ 0.1	0.91 [0.19; 4.18]	0.90
Weight (kg)	89 $\pm$ 18	93 $\pm$ 17	1.006 [0.99; 1.01]	0.14
Body Mass Index (kg/m <sup>2</sup> )	29 $\pm$ 5	30 $\pm$ 5	<b>1.03 [1.00; 1.05]</b>	<b>0.051</b>
Body Surface Area (m <sup>2</sup> )	2.1 $\pm$ 0.2	2.1 $\pm$ 0.2	1.47 [0.86; 2.53]	0.16
Diagnosis-to-ablation-time (months)	15 $\pm$ 18	19 $\pm$ 21	1.005 [0.99; 1.01]	0.15
Long standing persistent AF	13 (7%)	39 (18%)	<b>2.06 [1.45; 2.93]</b>	<b>&lt; 0.001</b>
Clearance (ml/min)	81 $\pm$ 21	82 $\pm$ 22	0.99 [0.99; 1.004]	0.52
Clearance $\leq$ 60 ml/min	30 (16%)	31 (15%)	1.02 [0.70; 1.49]	0.92
Hypertension	82 (44%)	111 (53%)	<b>1.37 [1.05; 1.80]</b>	<b>0.022</b>
Diabetes mellitus	23 (12%)	29 (14%)	1.26 [0.85; 1.87]	0.25
Heart Failure	46 (24%)	32 (15%)	0.69 [0.47; 1.007]	0.054
Coronary artery disease	14 (7%)	32 (15%)	1.42 [0.98; 2.08]	<b>0.07</b>
Absence of SHD	125 (66%)	134 (63%)	0.92 [0.70; 1.22]	0.57
CHA <sub>2</sub> DS <sub>2</sub> -VASc score	1.6 $\pm$ 1.4	1.7 $\pm$ 1.4	1.09 [0.99; 1.20]	<b>0.08</b>
Previous cavotricuspid isthmus ablation	14 (7%)	15 (7%)	0.94 [0.55; 1.59]	0.81
LA area (cm <sup>2</sup> )	25 $\pm$ 5	27 $\pm$ 5	<b>1.07 [1.03; 1.10]</b>	<b>&lt; 0.001</b>
LA volume (ml)	158 $\pm$ 43	172 $\pm$ 40	<b>1.007 [1.004; 1.01]</b>	<b>&lt; 0.001</b>
LA volume Index (ml/m <sup>2</sup> )	76 $\pm$ 20	81 $\pm$ 20	<b>1.01 [1.006; 1.02]</b>	<b>&lt; 0.001</b>
LVEF (%)	53 $\pm$ 12	54 $\pm$ 12	1.001 [0.99; 1.01]	0.82
LVEF < 50%	53 (28%)	46 (22%)	0.86 [0.62; 1.20]	0.37
LVEF $\leq$ 40%	39 (21%)	35 (17%)	0.92 [0.64; 1.32]	0.66
LCT	28 (15%)	35 (17%)	1.02 [0.71; 1.46]	0.92
Accessory vein	20 (11%)	31 (15%)	1.39 [0.95; 2.03]	0.09
Third-generation balloon	24 (13%)	26 (12%)	0.92 [0.61; 1.39]	0.69
Fourth-generation balloon	51 (27%)	27 (13%)	0.98 [0.65; 1.48]	0.93
Cavotricuspid isthmus ablation at PVI	31 (16%)	37 (17%)	0.91 [0.64; 1.30]	0.61



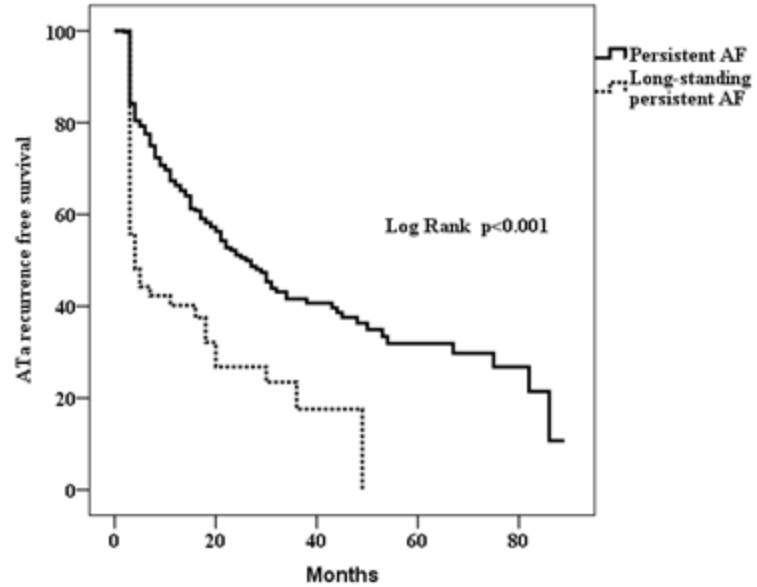
AF: atrial fibrillation, ATa: atrial tachyarrhythmia, LA: left atrium, LCT: left common trunk, LV: left ventricle, LVEF: left ventricle ejection fraction, PVI: pulmonary vein isolation, SHD: structural heart disease

Cryoballoon PVI for **persistent AF**  
n=347

**Two-year ATa-free survival rate: 51%**

Cryoballoon PVI for **long-standing persistent AF**  
n=52

**Two-year ATa-free survival rate: 27%**



**Predictors of recurrence**  
Long-standing persistent AF  
Left atrial dimension (area or volume)

**Complications**  
Phrenic nerve palsy: 2.5%  
Tamponade: 0.25%  
Stroke: 0.5%  
Pericardial effusion: 0.5%  
Vascular complications: 1.25%