



Dissociation between the clinical course and chest imaging in severe COVID-19 pneumonia: A series of five cases

Damien Basille, Marie-Anne Auquier, Claire Andrejak, Daniel Oscar Rodenstein, Yazine Mahjoub, Vincent Jounieaux

► To cite this version:

Damien Basille, Marie-Anne Auquier, Claire Andrejak, Daniel Oscar Rodenstein, Yazine Mahjoub, et al.. Dissociation between the clinical course and chest imaging in severe COVID-19 pneumonia: A series of five cases. *Heart & Lung*, 2021, 50 (6), 10.1016/j.hrtlng.2021.06.008 . hal-03574729

HAL Id: hal-03574729

<https://u-picardie.hal.science/hal-03574729>

Submitted on 2 Aug 2023

HAL is a multi-disciplinary open access archive for the deposit and dissemination of scientific research documents, whether they are published or not. The documents may come from teaching and research institutions in France or abroad, or from public or private research centers.

L'archive ouverte pluridisciplinaire **HAL**, est destinée au dépôt et à la diffusion de documents scientifiques de niveau recherche, publiés ou non, émanant des établissements d'enseignement et de recherche français ou étrangers, des laboratoires publics ou privés.



Distributed under a Creative Commons Attribution - NonCommercial 4.0 International License

Title: Dissociation between the clinical course and chest imaging in severe COVID-19 pneumonia: a series of five cases.

Damien Basille, MD, PhD¹⁻², Marie-Anne Auquier, MD³, Claire Andréjak, MD, PhD¹⁻², Daniel Oscar Rodenstein, MD, PhD⁴, Yazine Mahjoub, MD, PhD⁵, Vincent Jounieaux, MD, PhD¹⁻², on behalf of the A&P Group*

¹ Pneumology Department.
University Hospital Centre. Amiens. France

² AGIR Unit – UR4294.
University Picardie Jules Verne, Amiens, France

³ Radiology Department.
University Hospital Centre. Amiens. France

⁴ Pneumology Department.
Cliniques Universitaires Saint-Luc,
Université Catholique de Louvain. Brussels. Belgium

⁵ Anesthesia and Critical Care. Cardiac, Thoracic, Vascular and Respiratory Intensive Care Unit.
University Hospital Centre. Amiens. France

* A complete list of members may be found in the Acknowledgements section

Correspondance to:

Damien Basille MD
Pneumology Department.
University Hospital Centre. Amiens. France
Corresponding author
Email: basille.damien@chu-amiens.fr

Phone: + 33 3 22 45 59 05

Word count for the text: 2719

Word count for the abstract: 291

Summary conflict of interest statements: the authors do not report any conflict of interest

Funding: This research did not receive any specific grant from funding agencies in the public, commercial, or not-for-profit sectors.

Prior abstract publication/presentation: none

Acknowledgements

- **Guarantor statement:** DB is the guarantor of the content of the manuscript, including the data and analysis
- **Authors contribution:** DB, MAA, YM, CA, DOR, and VJ contributed substantially to the study design, data analysis and interpretation, and the writing of the manuscript.
- **Financial/nonfinancial disclosures:** the authors do not report any conflict of interest.
- **Role of the sponsors:** none
- **Members of the A&P group:**

First name	Last name	Email adress
Anesthesia department:		
Norair	Airapetian	airapetian.norair@chu-amiens.fr
Nacim	Ammenouche	ammenouche.nacim@chu-amiens.fr
Louise	Badoux	badoux.louise@chu-amiens.fr
Guillaume	Bayart	baygui@orange.fr
Michael	Bernasinski	bernasinski.michael@chu-amiens.fr
Patricia	Besserve	besserve.christophe@chu-amiens.fr
Christophe	Beyls	beyls.christophe@chu-amiens.fr
Mathieu	Caboche	matthieu.caboche62@gmail.com
Fanny	Delanghe	delanghe.fanny@chu-amiens.fr
Amandine	Dubreucq	dubreucq.amandine@chu-amiens.fr
Hervé	Dupont	dupont.herve@chu-amiens.fr
Guillaume	Fevre	guillaume.fevre@hotmail.fr
Otillie	Fumery	fumery.otillie@chu-amiens.fr
Mathieu	Guilbart	guilbart.mathieu@chu-amiens.fr
Sebastien	Hinard	hinard.sebastien@chu-amiens.fr
Pierre	Huette	huette.pierre@chu-amiens.fr
Patrick	Jeanjean	jeanjean.patrick@chu-amiens.fr
Benoit	Lecat	lecat.benoit@chu-amiens.fr
Florent	Leviel	leviel.florent@chu-amiens.fr
Pierre-Yves	Macq	macq.pierre-yves@chu-amiens.fr
Stéphanie	Malaquin	malaquin.stephanie@chu-amiens.fr
Francois	Tinturier	tinturier.francois@chu-amiens.fr
Pierre Alexandre	Roger	roger.pierre-alexandre@chu-amiens.fr
Alexis	Salomon	salomon.alexis@chu-amiens.fr
Benjamin	Terassi	terasi.benjamin@chu-amiens.fr
Pulmonology department:		
Hortense	Carette	carette.hortense@chu-amiens.fr
Mélanie	Drucbert	drucbert.melanie@chu-amiens.fr

Ugo	Fouquet	fouquet.ugo@chu-amiens.fr
Géraldine	François	francois.geraldine@chu-amiens.fr
Alice	Henry	henry.alice@chu-amiens.fr
Isabelle	Mayeux	mayeux.isabelle@chu-amiens.fr
Julien	Monconduit	monconduit.julien@chu-amiens.fr
Elisabeth	Popin	popin.elisabeth@chu-amiens.fr
Claire	Poulet	poulet.claire@chu-amiens.fr
Lola	Soriot	soriot.lola@chu-amiens.fr
Bénédicte	Toublanc	toublanc.benedicte@chu-amiens.fr
Florence	Weppe	weppe.florence@chu-amiens.fr

Abstract:

Background: Although an RT-PCR test is the “gold standard” tool for diagnosing an infection with severe acute respiratory syndrome coronavirus 2 (SARS-CoV-2), chest imaging can be used to support a diagnosis of coronavirus disease 2019 (COVID-19) – albeit with fairly low specificity. However, if the chest imaging findings do not faithfully reflect the patient’s clinical course, one can question the rationale for relying on these imaging data in the diagnosis of COVID-19.

Aims: To compare clinical courses with changes over time in chest imaging findings among patients admitted to an ICU for severe COVID-19 pneumonia.

Methods: We retrospectively reviewed the medical charts of all adult patients admitted to our intensive care unit (ICU) between March 1, 2020, and April 15, 2020, for a severe COVID-19 lung infection and who had a positive RT-PCR test. Changes in clinical, laboratory and radiological variables were compared, and patients with discordant changes over time (e.g. a clinical improvement with stable or worse radiological findings) were analyzed further.

Results: Of the 46 included patients, 5 showed an improvement in their clinical status but not in their chest imaging findings. On admission to the ICU, three of the five were mechanically ventilated and the two others received high-flow oxygen therapy or a non-rebreather mask. Even though the five patients’ radiological findings worsened or remained stable, the mean \pm standard deviation partial pressure of arterial oxygen to the fraction of inspired oxygen ($\text{PaO}_2\text{:FiO}_2$) ratio increased significantly in all cases (from 113.2 ± 59.7 mmHg at admission to 259.8 ± 59.7 mmHg at a follow-up evaluation; $p=0.043$).

Interpretation: Our results suggest that in cases of clinical improvement with worsened or stable chest imaging variables, the $\text{PaO}_2\text{:FiO}_2$ ratio might be a good marker of the resolution of COVID-19-specific pulmonary vascular insult.

25 **Keywords:** Acute vascular distress syndrome; Acute respiratory distress syndrome; COVID-
26 19; Critical care; Radiology and other imaging; Viral infection.

27 **List of abbreviations:**

28 AVDS: acute vascular distress syndrome

29 BMI: body mass index

30 CT: computed tomography

31 GGO: ground glass opacity

32 ICU: intensive care unit

33 $\text{PaO}_2\text{:FiO}_2$: ratio of the partial pressure of arterial oxygen to the fraction of inspired oxygen

34 RT-PCR: reverse-transcription polymerase chain reaction

Introduction

Since the start of the severe acute respiratory syndrome coronavirus 2 (SARS-CoV-2) outbreak in the Hubei province of China, more than 151 million people had been infected and more than 3.1 million had died by the first week of May 2021 in the 213 countries, areas or territories covered by the United Nations.¹ The pandemic of coronavirus 2019 disease (COVID-19) hit France in late February 2020. Picardy was one of the country's most affected regions, with an incidence of confirmed infection of over 10 per 100,000 people on March 11th, 2020.² The number of patients admitted to the intensive care units (ICUs) in our tertiary hospital increased dramatically at this time, and forced us to reorganize our regional resources.^{3,4} By April 21st, 2020, 81 COVID-19 patients had been admitted to our ICU.

Early diagnosis of COVID-19 is crucial for disease treatment and control, and the detection of viral nucleic acid in a reverse-transcription polymerase chain reaction (RT-PCR) test remains the gold standard diagnostic tool. However, it has been suggested that the RT-PCR test's lack of sensitivity, insufficient stability and relatively long processing time weaken our ability to control the COVID-19 pandemic.⁵ Moreover, RT-PCR assays for SARS-CoV-2 were not available in several countries during the epidemic period.⁶ In this context, chest imaging can be used to support the diagnosis of COVID-19 pneumonia.^{7,8} There is currently no consensus among the main radiology societies on the type of chest imaging to use in the diagnosis of COVID-19 pneumonia. The British Society of Thoracic Imaging and the Canadian Society of Radiologists suggested that a chest X-ray should be the first-line tool in stable patients.^{9,10} Chest computed tomography (CT) is typically used to (i) assess patients with comorbidities and/or a high risk of disease progression and (ii) screen for complications. Chest CT can reveal early pneumonia with greater sensitivity than a chest X-ray. However, the sensitivity and the specificity of CT are lower in non-pandemic areas.¹¹⁻¹³ Therefore, the

choice of the imaging modality depends on the judgment of clinical teams, the availability of local resources, and the expertise of local radiologists.

Relative to RT-PCR, chest CT offers good sensitivity, positive predictive values and negative predictive values, although the specificity is fairly low (97%, 65%, 83%, and 25%, respectively).⁵ Nevertheless, the CT images used to diagnose COVID-19 pneumonia are not specific for SARS-CoV-2 virus infections, which cannot easily be distinguished from cases of viral pneumonitis due to influenza or other viruses. Despite this uncertainty, the imaging-based diagnosis of COVID-19 pneumonia may still be valuable in an appropriate epidemiologic context. However, if the clinical course differed from the change over time in the concomitant imaging findings for PCR-confirmed COVID-19 pneumonia, one could question the reliance on chest imaging when attributing pneumonia to the SARS-CoV-2 virus.

We therefore decided to compare clinical courses with changes over time in chest imaging findings among patients admitted to an ICU for severe COVID-19 pneumonia.

Methods

This study was conducted in Amiens-Picardie University Medical Center (Amiens, France). We retrospectively reviewed the medical charts of all adult patients with COVID-19 admitted to our ICU between March 1, 2020, and April 15, 2020. COVID-19 was diagnosed on the basis of nasopharyngeal swab specimens that were positive in a SARS-CoV-2 RT-PCR test. Severe COVID-19 pulmonary infection was defined as respiratory failure requiring invasive mechanical ventilation or high-flow oxygen (through a high-flow nasal cannula or a non-rebreather oxygen mask) upon admission to the ICU. We compared the clinical course with the changes in chest imaging between admission and a follow-up evaluation. Patients

were classified into three categories (Figure 1): (i) those with clinical and radiological improvement, (ii) those with clinical and radiological worsening, and (iii) those with a clinical improvement but stable or worsening radiological findings. Clinical improvement was defined as weaning off mechanical ventilation or a significant decrease in the inspired oxygen fraction. Radiological improvement was defined as a decrease in the affected areas of the lung and the absence of new lesions. Only the patients with clinical improvement but no radiological improvement were selected for further analysis. The patients in this group were further subdivided into those with stable radiological findings and those with worse radiological findings. A radiologist with expertise in chest imaging analyzed the radiological data and validated the radiological outcome. For patients assessed with chest CT, the pneumonia extension was assessed according to the guidelines issued by the European Society of Radiology and the European Society of Thoracic Imaging.¹⁴ For patients assessed with chest X-rays, we used the scoring system described by Borghesi and Maroldi.¹⁵

Variables assessed:

The following data were obtained from the patients' medical charts: age, sex, comorbidities, self-reported smoking status, and body mass index (BMI). Following admission to the ICU, the results of arterial blood gas, ventilatory support mode and concomitant thoracic imaging data were recorded. The time interval between symptom onset and the initial evaluation was noted. The ratio of the partial pressure of arterial oxygen to the fraction of inspired oxygen ($\text{PaO}_2:\text{FiO}_2$) was computed for each patient. These data were also collected at the follow-up radiological evaluation (chest CT when it had been available for the initial evaluation, or a chest X-ray). In patients to whom oxygen was delivered through nasal prongs, the delivered FiO_2 was estimated using the equation published by Markovitz et al. ($21\% + 2.5\%$ per L/min of additional oxygen).¹⁶ Wilcoxon's paired test was used to compare the $\text{PaO}_2:\text{FiO}_2$ ratio at baseline and at follow-up.

Ethical considerations:

In line with the French legislation on non-interventional studies, our institutional review board waived the need for written, informed consent. The study database was registered with the French National Data Protection Commission (*Commission Nationale de l'Informatique et des Libertés*, Paris, France; reference: PI2020_843_0026, March 19th, 2020). The patients and their families were provided with verbal and written information on the study.

Results

Eighty-one patients with a positive SARS-CoV-2 RT-PCR test were admitted to our ICU and included in the study. In line with our exclusion criteria, thirty-five patients were excluded from the study (lack of radiological data at follow-up: n=22; non-severe COVID-19 pneumonia: n=7; COVID-19 without respiratory signs or symptoms: n=2; loss to follow-up: n=4). Of the 46 patients with severe COVID-19 pneumonia, the change in radiological status was assessed with a chest X-ray in 28 cases (60.9%) and with chest CT in 18 cases (39.1%). Twenty-seven patients showed a clinical and radiological improvement, 14 had clinical and radiological worsening, and 5 patients showed a discordant change (i.e. clinical improvement in the absence of radiological improvement) and were analyzed further (Figure 1 and Table 1). The mean \pm standard deviation age of the study population was 65.0 ± 7.8 , and the mean BMI was 31.6 ± 6.1 kg/m². Three patients presented at least one comorbidity, and only one was a former smoker. The mean time from disease onset to ICU admission was 10.0 ± 6.1 days. At ICU admission, three patients were intubated and mechanically ventilated with a lung-protective strategy, whereas the other two patients were given high-flow oxygen therapy or a non-rebreather mask. The clinical course, blood gas levels, and chest imaging findings were then evaluated between 9 and 28 days after admission.

Cases presentation

Patient #1 was a 73-year-old man who required high-flow nasal oxygen therapy (flow rate: 50 L/min; $\text{FiO}_2 = 100\%$), with a $\text{PaO}_2:\text{FiO}_2$ of 74. Mechanical ventilation was initiated on day 3, and the patient underwent two prone-positioning sessions (each lasting at least 16 hours). Treatment with lopinavir/ritonavir (400/100 mg, twice daily) was initiated but was withdrawn after 7 days because of overdosing. The clinical course was complicated by ventilator-associated pneumonia (*Pseudomonas aeruginosa*) with concomitant pulmonary mucormycosis. The patient was weaned off mechanical ventilation on day 22 and switched to a Venturi oxygen mask (flow rate: 6 L/min; $\text{FiO}_2 = 30\%$); the $\text{PaO}_2:\text{FiO}_2$ was 353. He was discharged to a pulmonary rehabilitation unit on day 43.

Patient #2 was a 53-year-old man who initially received oxygen through a non-rebreather mask (flow rate: 50 L/min; $\text{FiO}_2 = 100\%$), with a $\text{PaO}_2:\text{FiO}_2$ of 75. On day 2, the blood gas profile worsened rapidly, and the patient was intubated, mechanically ventilated with inhaled nitric oxide (10 ppm), and underwent two prone-positioning sessions (each lasting at least 16 hours). The patient was given remdesivir (100 mg/day for 10 days) and was weaned off mechanical ventilation on day 7. While breathing oxygen (4L/min) through nasal prongs, the estimated $\text{PaO}_2:\text{FiO}_2$ was 256. The patient was discharged to home on day 16.

Patient #3 was a 70-year-old man who required lung-protective mechanical ventilation ($V_t = 420\text{ml}$; $F = 25.\text{min}^{-1}$), with a FiO_2 of 50%, a positive end-expiratory pressure (PEEP) of 15 cmH_2O , and no inhaled nitric oxide. The $\text{PaO}_2:\text{FiO}_2$ ratio was 216. The patient underwent eight prone-positioning sessions (each lasting at least 16 hours) and received standard care (i.e. no specific antiviral agents were administered). Due to severe ICU-acquired weakness, he was tracheotomized on day 27 and was switched from volume-controlled ventilation to pressure support ventilation (pressure support = 8 cmH_2O , PEEP = 5 cmH_2O),

with a FiO_2 of 30%. The $\text{PaO}_2\text{:FiO}_2$ ratio increased to 250. The tracheostomy was closed on day 40, and patient was discharged to a pulmonary rehabilitation unit on day 47.

Patient #4 was a 62-year-old man who required lung-protective mechanical ventilation ($V_t = 430\text{ml}$; $F = 30.\text{min}^{-1}$), with a FiO_2 of 80% FiO_2 , a PEEP of 15 cmH_2O , and no inhaled nitric oxide. He underwent two prone-positioning sessions (each lasting at least 16 hours) and was given lopinavir/ritonavir (400/100 mg twice daily) for 10 days. The $\text{PaO}_2\text{:FiO}_2$ ratio was initially 87 and increased to 186 on day 9. At this time, the patient was switched to pressure support ventilation (pressure support = 15 cmH_2O , PEEP = 12 cmH_2O), with a FiO_2 of 50%. He was weaned off mechanical ventilation on day 16 and discharged to a pulmonary rehabilitation unit on day 18.

Patient #5 was a 67-year-old man, who required venovenous extracorporeal membrane oxygenation and lung-protective mechanical ventilation (peak inspiratory pressure = 18 cmH_2O ; $F=20.\text{min}^{-1}$), with a FiO_2 of 60%, a PEEP of 12 cmH_2O , and inhaled nitric oxide. The patient did not undergo any prone-positioning sessions. He was given lopinavir/ritonavir (400/100 mg twice daily) for 10 days. Venovenous extracorporeal membrane oxygenation was withdrawn on day 8. The $\text{PaO}_2\text{:FiO}_2$ was initially 114 and increased to 254 on day 21. At this time, the patient was on pressure support ventilation (pressure support = 18 cmH_2O , PEEP = 8 cmH_2O), with a FiO_2 of 50%. Due to severe ICU-acquired weakness, the patient was tracheotomized on day 25 and was transferred to a general hospital on day 27.

The radiological changes in the five patients between ICU admission and the follow-up evaluation are shown in Table 1 and Figures 2 and 3. Despite the observed worsening or stability of the radiological findings, the $\text{PaO}_2\text{:FiO}_2$ increased significantly in all five patients ($p=0.043$). The mean $\text{PaO}_2\text{:FiO}_2$ ratio was 113.2 ± 59.7 mmHg at admission and 259.8 ± 59.7 mmHg at follow-up (Figure 4).

Discussion:

We observed statistically significant and clinically meaningful increases in $\text{PaO}_2:\text{FiO}_2$ in five ICU patients with severe COVID-19 pneumonia over a mean period of 18.0 ± 8.6 days, despite the lack of any improvement in the chest imaging. These observations suggest that the radiographic and clinical courses can diverge in some confirmed cases of COVID-19, and thus cast doubt on the reliability of chest imaging in the establishment of a firm diagnosis of SARS-CoV-2 infection.

In their retrospective study of 81 hospitalized COVID-19 patients, Shi et al. reported that the viral pneumonia manifested itself with typically abnormal chest CT findings - even in asymptomatic individuals. A rapid progression from focal, unilateral ground-glass opacities (GGOs) to diffuse, bilateral GGOs with consolidation can be observed within 1 to 3 weeks of infection.¹⁷ Given that the imaging features of COVID-19 pneumonia can change rapidly, Pan et al. distinguished four typical disease stages.^{18,19} According to this classification, the patients in our series were admitted to the ICU at different disease stages: early-stage disease for patient #1, progressive disease for patient #2; peak disease for patients #3 and #4, and absorption-stage disease for patient #5. Hence, Pan et al.'s classification was not appropriate for assessing the severity of COVID-19 pneumonia in our five patients.

Ai et al. reported that the specificity of chest CT for diagnosing COVID-19 infection was as low as 25%.⁵ Indeed, the chest imaging features of COVID-19 pneumonia overlap markedly with those of other types of viral pneumonia. Although GGOs are frequently observed in *Adenoviridae*, *Herpesviridae* and *Picornaviridae* infections, consolidation is reported with *Adenoviridae*, *Herpesviridae* and other emergent *Coronaviridae*.²⁰ In view of this low specificity, the positive predictive value and the diagnostic accuracy are highly

dependent on the pre-test probability, which in turn is determined by the epidemiological context. A recent meta-analysis by Kim et al. showed that in areas of low COVID-19 prevalence (range: 1%-22.9%), chest CT screening of patients with suspected disease had a low positive predictive value (range: 1.5%-30.7%).¹³

Shi et al. described four radiological outcome patterns on follow-up CT scan: initial progression to a peak level, followed by radiological improvement (46%); radiological improvement (14%); unchanged radiological appearance (9%) and radiological deterioration (32%).¹⁷ All our patients were reevaluated at the absorption stage, and our results are quite similar to Shi et al.'s findings: we observed radiological improvement in 27 of the 46 evaluable patients (58.7%), an unchanged radiological appearance in two (4.3%), and radiological deterioration in 17 (37.0%). Five of our 46 patients presented with a discordant course (i.e. clinical improvement in the absence of radiological improvement). These results are similar to those reported by Bruns et al. who observed a possible discordance between the clinical course and radiological changes in patients with severe, community-acquired pneumonia.²¹ The time to radiological resolution of the pneumonia appears to be correlated with older age and the number of lobes involved.²² In these situations, however, the change in the PaO₂:FiO₂ ratio is correlated with the radiological change.

Gattinoni et al. have described two time-dependent chronological phenotypes among patients suffering from COVID-19 pneumonia.²³ The five cases reported here raise questions about the mechanism of the increase in the PaO₂:FiO₂ ratio during COVID-19 pneumonia. In fact, our observations suggest that the hypoxemia was due not only to lung parenchyma lesions but also to another pathophysiological mechanism. The discordant changes observed in our five patients (a dramatic increase in the PaO₂:FiO₂ ratio in the absence of a radiological improvement) support our "intrapulmonary shunt" hypothesis. Indeed, we recently hypothesized that all stages of COVID-19 are characterized by an elevated

pulmonary blood flow and an intrapulmonary right-to-left shunt – prompting us to introduce the acronym AVDS for “acute vascular distress syndrome”.^{24,25}

Vascular abnormalities have been described by various researchers in histological or radiological studies of patients with COVID-19 pneumonia.^{26–29} The vascular disorders induced by COVID-19 may result in an intrapulmonary shunt, which is generally masked by the diffuse damage to the lung parenchyma. In the study by Ai et al., 21 of the 601 patients (3%) with a positive RT-PCR test had negative chest CT findings - suggesting that the pulmonary vascular insult might be the only manifestation of the disease in some patients.⁵ These patients should not be considered as being asymptomatic, since their pulmonary vascular insult might lead to an intrapulmonary shunt that can be only evidenced by contrast-enhanced echocardiography.²⁵ One can assume that hypoxemia will decrease upon recovery from the pulmonary vascular insult, regardless of the course of the lung’s parenchymal lesions. The clear-cut PaO₂:FiO₂ ratio improvement observed in our five patients (despite stable or worsening chest imaging results) argues in favor of this hypothesis.

Our study also had some limitations. Notably, the change in chest imaging findings was assessed with CT in only 18 of the 46 patients. For patients assessed with a chest X-ray, some radiological features (such as vascular enlargement and GGOs) may have been misclassified.

Conclusion:

Our observation of five cases of significant clinical and blood gas improvements in patients with stable or worsening radiological findings suggests that chest imaging is not a reliable means of assessing the initial vascular damage and the likely outcome of some ICU patients with severe COVID-19 disease. The PaO₂:FiO₂ ratio could then be considered as a

257 good marker of the resolution of the COVID-19-specific pulmonary vascular insult. Further
258 clinical studies will be useful to confirm this result.

References:

1. World Health Organisation. *Coronavirus Disease (COVID-19) - Weekly Epidemiological Update - 4 May 2021*.; 2021. Accessed May 9, 2021. <https://www.who.int/publications/m/item/weekly-epidemiological-update-on-covid-19---4-may-2021>
2. Santé publique France. *COVID-19 : Point Épidémiologique Du 24 Mars 2020*.; 2020. <https://www.santepubliquefrance.fr/maladies-et-traumatismes/maladies-et-infections-respiratoires/infection-a-coronavirus/documents/bulletin-national/covid-19-point-epidemiologique-du-24-mars-2020>
3. Santé publique France. *COVID-19 : Point Épidémiologique Du 09 Avril 2020*.; 2020. <https://www.santepubliquefrance.fr/maladies-et-traumatismes/maladies-et-infections-respiratoires/infection-a-coronavirus/documents/bulletin-national/covid-19-point-epidemiologique-du-9-avril-2020>
4. Terrasi B, Arnaud E, Guilbart M, Besserve P, Mahjoub Y. French ICUs fight back: An example of regional ICU organisation to tackle the SARS-CoV-2 outbreak. *Anaesth Crit Care Pain Med*. 2020;39(3):355-357. doi:10.1016/j.accpm.2020.03.018
5. Ai T, Yang Z, Hou H, et al. Correlation of Chest CT and RT-PCR Testing for Coronavirus Disease 2019 (COVID-19) in China: A Report of 1014 Cases. *Radiology*. 2020;296(2):E32-E40. doi:10.1148/radiol.2020200642
6. Ioannidis JPA. Coronavirus disease 2019: The harms of exaggerated information and non-evidence-based measures. *Eur J Clin Invest*. 2020;50(4). doi:10.1111/eci.13222
7. National Center for Immunization and Respiratory Diseases (U.S.). Division of Viral Diseases., ed. Interim clinical guidance for management of patients with confirmed coronavirus disease (COVID-19). Published online June 30, 2020. <https://stacks.cdc.gov/view/cdc/89980>
8. American College of Radiology. *ACR Recommendations for the Use of Chest Radiography and Computed Tomography (CT) for Suspected COVID-19 Infection*.; 2020. Accessed May 14, 2021. <https://www.acr.org/Advocacy-and-Economics/ACR-Position-Statements/Recommendations-for-Chest-Radiography-and-CT-for-Suspected-COVID19-Infection>
9. Nair A, Rodrigues JCL, Hare S, et al. A British Society of Thoracic Imaging statement: considerations in designing local imaging diagnostic algorithms for the COVID-19 pandemic. *Clin Radiol*. 2020;75(5):329-334. doi:10.1016/j.crad.2020.03.008
10. Dennie C, Hague C, Lim RS, et al. Canadian Society of Thoracic Radiology/Canadian Association of Radiologists Consensus Statement Regarding Chest Imaging in Suspected and Confirmed COVID-19. *Can Assoc Radiol J*. 2020;71(4):470-481. doi:10.1177/0846537120924606
11. Rubin GD, Ryerson CJ, Haramati LB, et al. The Role of Chest Imaging in Patient Management During the COVID-19 Pandemic: A Multinational Consensus Statement From the Fleischner Society. *Chest*. 2020;158(1):106-116. doi:10.1016/j.chest.2020.04.003

12. Akl EA, Blažić I, Yaacoub S, et al. Use of Chest Imaging in the Diagnosis and Management of COVID-19: A WHO Rapid Advice Guide. *Radiology*. 2021;298(2):E63-E69. doi:10.1148/radiol.2020203173
13. Kim H, Hong H, Yoon SH. Diagnostic Performance of CT and Reverse Transcriptase Polymerase Chain Reaction for Coronavirus Disease 2019: A Meta-Analysis. *Radiology*. 2020;296(3):E145-E155. doi:10.1148/radiol.2020201343
14. Revel M-P, Parkar AP, Prosch H, et al. COVID-19 patients and the radiology department - advice from the European Society of Radiology (ESR) and the European Society of Thoracic Imaging (ESTI). *Eur Radiol*. 2020;30(9):4903-4909. doi:10.1007/s00330-020-06865-y
15. Borghesi A, Maroldi R. COVID-19 outbreak in Italy: experimental chest X-ray scoring system for quantifying and monitoring disease progression. *Radiol Med*. 2020;125(5):509-513. doi:10.1007/s11547-020-01200-3
16. Markovitz GH, Colthurst J, Storer TW, Cooper CB. Effective inspired oxygen concentration measured via transtracheal and oral gas analysis. *Respir Care*. 2010;55(4):453-459.
17. Shi H, Han X, Jiang N, et al. Radiological findings from 81 patients with COVID-19 pneumonia in Wuhan, China: a descriptive study. *Lancet Infect Dis*. 2020;20(4):425-434. doi:10.1016/S1473-3099(20)30086-4
18. Pan Y, Guan H, Zhou S, et al. Initial CT findings and temporal changes in patients with the novel coronavirus pneumonia (2019-nCoV): a study of 63 patients in Wuhan, China. *Eur Radiol*. 2020;30(6):3306-3309. doi:10.1007/s00330-020-06731-x
19. Pan F, Ye T, Sun P, et al. Time Course of Lung Changes at Chest CT during Recovery from Coronavirus Disease 2019 (COVID-19). *Radiology*. 2020;295(3):715-721. doi:10.1148/radiol.2020200370
20. Koo HJ, Lim S, Choe J, Choi S-H, Sung H, Do K-H. Radiographic and CT Features of Viral Pneumonia. *Radiographics*. 2018;38(3):719-739. doi:10.1148/rg.2018170048
21. Bruns AHW, Oosterheert JJ, Prokop M, Lammers J-WJ, Hak E, Hoepelman AIM. Patterns of Resolution of Chest Radiograph Abnormalities in Adults Hospitalized with Severe Community-Acquired Pneumonia. *Clinical Infectious Diseases*. 2007;45(8):983-991. doi:10.1086/521893
22. Mittl RL, Schwab RJ, Duchin JS, Goin JE, Albeida SM, Miller WT. Radiographic resolution of community-acquired pneumonia. *Am J Respir Crit Care Med*. 1994;149(3 Pt 1):630-635. doi:10.1164/ajrccm.149.3.8118630
23. Gattinoni L, Chiumello D, Caironi P, et al. COVID-19 pneumonia: different respiratory treatments for different phenotypes? *Intensive Care Med*. 2020;46(6):1099-1102. doi:10.1007/s00134-020-06033-2
24. Mahjoub Y, Rodenstein DO, Jounieaux V. Severe Covid-19 disease: rather AVDS than ARDS? *Crit Care*. 2020;24(1):327. doi:10.1186/s13054-020-02972-w

- 339 25. Jounieaux V, Basille D, Abou-Arab O, et al. Pure SARS-CoV-2 related AVDS (Acute
340 Vascular Distress Syndrome). *BMC Infect Dis*. 2021;21(1):122. doi:10.1186/s12879-
341 021-05805-5
- 342 26. Yao XH, Li TY, He ZC, et al. [A pathological report of three COVID-19 cases by
343 minimal invasive autopsies]. *Zhonghua Bing Li Xue Za Zhi*. 2020;49(5):411-417.
344 doi:10.3760/cma.j.cn112151-20200312-00193
- 345 27. Ackermann M, Verleden SE, Kuehnel M, et al. Pulmonary Vascular Endothelialitis,
346 Thrombosis, and Angiogenesis in Covid-19. *N Engl J Med*. 2020;383(2):120-128.
347 doi:10.1056/NEJMoa2015432
- 348 28. Lang M, Som A, Carey D, et al. Pulmonary Vascular Manifestations of COVID-19
349 Pneumonia. *Radiology: Cardiothoracic Imaging*. 2020;2(3):e200277.
350 doi:10.1148/ryct.2020200277
- 351 29. Som A, Lang M, Little B. Pulmonary Vascular Pathology in Covid-19. *N Engl J Med*.
352 2020;383. doi:10.1056/NEJMc2022068

353

Figure legends:

Figure 1: Study flow chart

Figure 2: Changes in the chest CT findings (lung parenchyma window) between ICU admission (A and B) and the follow-up evaluation (C and D) for patients #1 and #2.

- Patient #1: A and C; patient #2: B and D.

Figure 3: Changes in the chest X-ray findings between ICU admission (A, B, and C) and the follow-up evaluation (D, E, and F) for patients #3, #4 and #5.

- Patient #3: A and D; patient #4: B and E; patient #5: C and F

Figure 4: Changes in the $\text{PaO}_2\text{:FiO}_2$ ratio between ICU admission and the follow-up evaluation.

$\text{PaO}_2\text{:FiO}_2$ ratio data are presented for each patient at baseline (ICU admission) and at the follow-up imaging evaluation.

371 **Table 1:** Characteristics of the five patients selected for analysis.

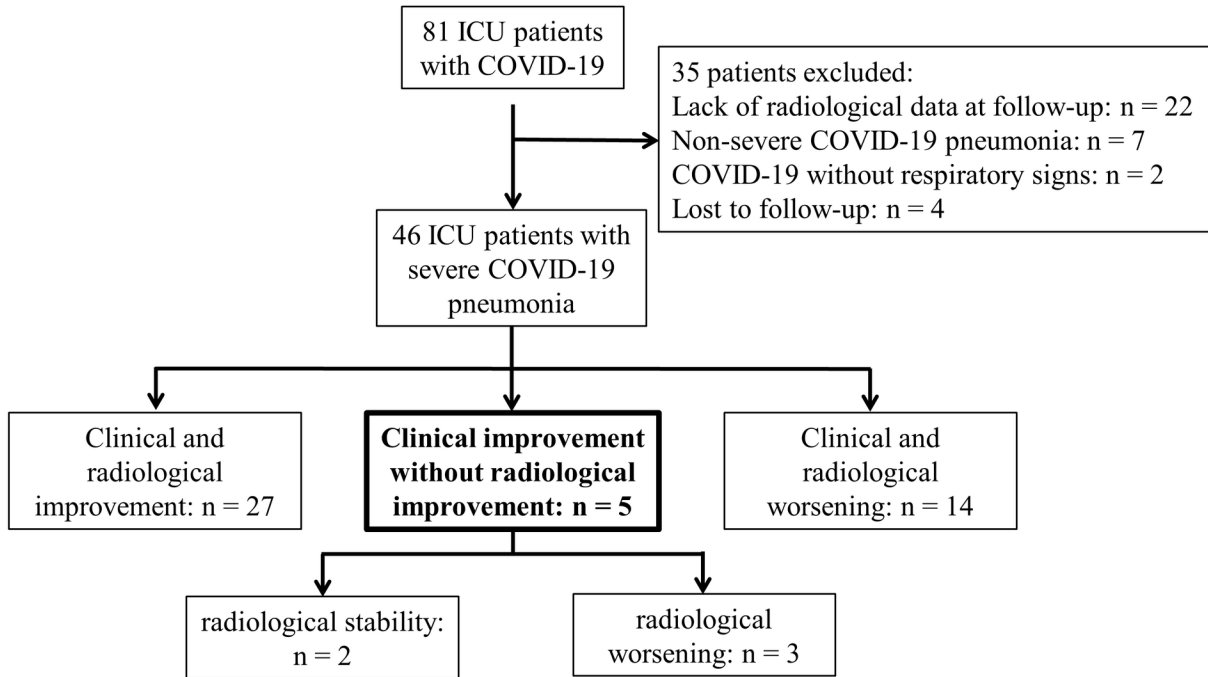
	Patient #1	Patient #2	Patient #3	Patient #4	Patient #5
Gender	Male	Male	Male	Male	Male
Age	73	53	70	62	67
BMI	27.2	30.9	42.1	27.4	30.2
Comorbidities	Hypertension, diabetes	None	Hypertension, diabetes, coronary artery disease	Obstructive sleep apnea syndrome, coronary artery disease, prostate cancer	None
Tobacco	No	No	No	Ex-smoker	No
Initial evaluation					
Time since symptom onset (days)	3	5	13	11	18
Initial chest imaging [†]	Chest CT: bilateral GGOs (extension: 30%)	Chest CT: bilateral GGOs (extension: 30%)	Chest X-ray: bilateral infiltrates (extension: 2/18)	Chest X-ray: bilateral infiltrates (extension: 6/18)	Chest X-ray: bilateral infiltrates, consolidation (extension: 8/18)
Initial ventilation or oxygen therapy	HF oxygen: Flow rate: 50 FiO ₂ = 100%	Non-rebreather mask: Flow rate: 15 FiO ₂ = 100%	VCV: F=25; Vt = 420; PEEP = 15; FiO ₂ = 50%	VCV: F=30; Vt = 430; PEEP = 15; FiO ₂ = 80%	ECMO + PCV: F=20; PIP = 18; PEEP = 12; FiO ₂ = 60%;
PaO ₂ (mmHg)	74.4	75.1	108	70.0	68.2
PaCO ₂ (mmHg)	33.1	41.2	37.9	47.3	34.6
pH	7.48	7.41	7.32	7.35	7.47
PaO ₂ :FiO ₂	74	75	216	87	114
Lactates (mmol/L)	3.1	1.8	2.1	1.6	2.4
Estimated GFR (ml/min)	102	143	17	84	113
CRP (mg/l)	397.1	175.2	163.1	357	329
Hemoglobin (g/dl)	11.4	12.0	11.8	11.8	10.9
Leukocyte count (10 ³ /mm ³)	7.2	10.3	7.1	7.0	7.1
Lymphocyte count (10 ³ /mm ³)	0.6	0.5	0.7	0.5	0.5
BNP (ng/L)	284	61	160	NA	NA
Therapy	Lopinavir - ritonavir	Remdesivir	No specific antiviral therapy	Lopinavir - ritonavir	Lopinavir - ritonavir
Second evaluation					
Time since first evaluation (days)	23	9	28	9	21

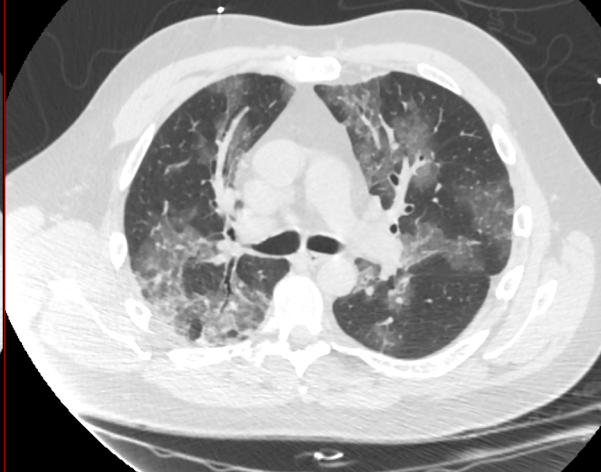
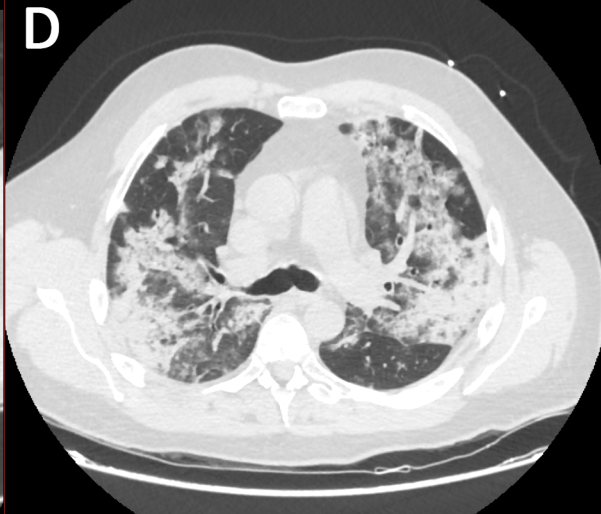
Follow-up chest imaging[†]	CT-scan: bilateral GGO, consolidation, (extension: 30%)	CT-scan: bilateral GGO, consolidation, (extension: 50%)	Chest x-ray: bilateral infiltrates, consolidation (extension: 8/18)	Chest x-ray: bilateral infiltrates, consolidation (extension: 7/18)	Chest x-ray: bilateral infiltrates, consolidation (extension: 8/18)
Ventilation / oxygen therapy*	Venturi oxygen mask: Flow rate: 6 FiO ₂ = 30%	Nasal prong: Flow rate: 4 FiO ₂ = 31%	PSV: PS = 8; PEEP = 5; FiO ₂ = 30%	PSV: PS = 15; PEEP = 12; FiO ₂ = 50%	PSV: PS = 18; PEEP = 8; FiO ₂ = 50%
PaO₂	106	79.7	74.5	92.9	127
PaCO₂	44	36.9	38.7	41.6	56.7
pH	7.38	7.44	7.43	7.42	7.35
PaO₂:FiO₂	353	256	250	186	254
Lactates (mmol/L)	1.4	1.3	2.1	2.9	1.5
Estimated GFR (ml/min)	41	49	118	90	137
CRP (mg/l)	94.3	NA	105.7	NA	105
Hb (g/dl)	7.2	10.4	8.4	10.9	9.5
Leukocyte count (10³/mm³)	5.4	8.0	7.1	14.9	16.6
Lymphocyte count (10³/mm³)	1.0	0.8	1.5	1.1	1.1

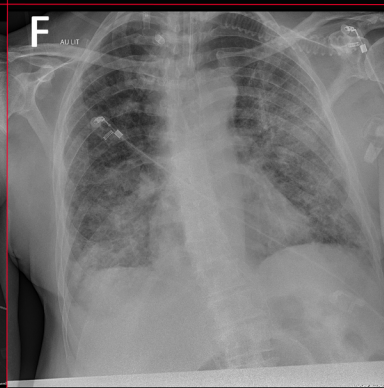
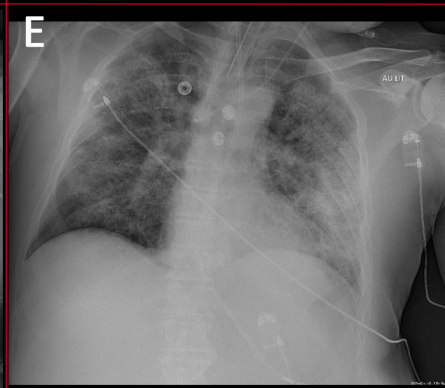
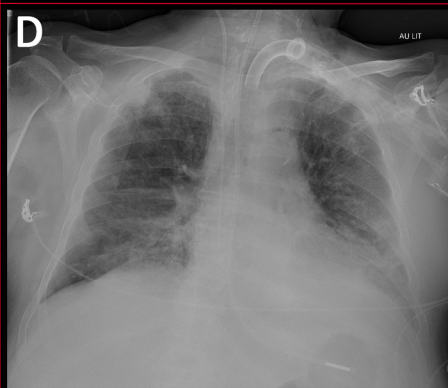
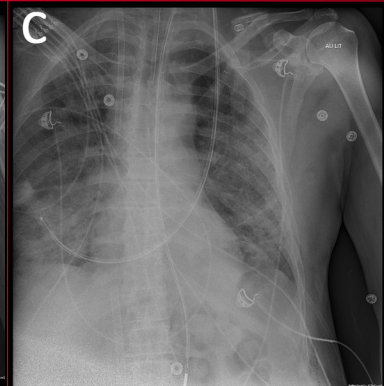
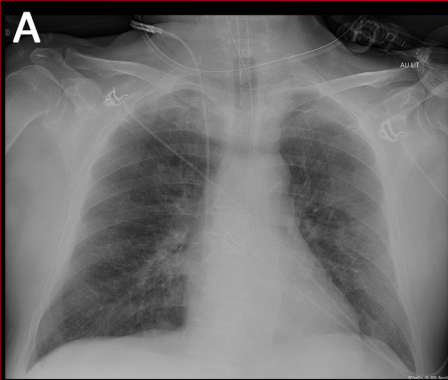
VCV: volume-controlled ventilation; ECMO: extracorporeal membrane oxygenation; PCV: pressure-controlled ventilation; PIP: peak inspiratory pressure; PSV: pressure support ventilation; GFR: glomerular filtration rate; CRP: C reactive protein; BNP: brain natriuretic peptide NA: not available

[†] For patients assessed with chest CT, our evaluation of the extension of pneumonia was based on the guidelines issued by the European Society of Radiology and the European Society of Thoracic Imaging.¹⁴ For patients assessed with a chest X-ray, we used the scoring system published by Borghesi et Maroldi.¹⁵

* In patients treated with oxygen via nasal prongs, we considered that the effective FiO₂ increased by 2.5% per additional liter of oxygen flow.



A**B****C****D**



$\text{PaO}_2:\text{FiO}_2$

