



Subclinical proximal tubulopathy in hepatitis B: The roles of nucleot(s)ide analogue treatment and the hepatitis B virus

Paul Carrier, Marilyne Debette-Gratien, Anais Labrunie, Sophie Alain, Marianne Maynard, Nathalie Ganne-Carrie, Eric Nguyen-Khac, Pauline Pinet, Victor de Ledinghen, Christophe Renou, et al.

► To cite this version:

Paul Carrier, Marilyne Debette-Gratien, Anais Labrunie, Sophie Alain, Marianne Maynard, et al.. Subclinical proximal tubulopathy in hepatitis B: The roles of nucleot(s)ide analogue treatment and the hepatitis B virus. World journal of hepatology, 2020, 12 (12), pp.1326-1340. 10.4254/wjh.v12.i12.1326 . hal-03590856

HAL Id: hal-03590856

<https://u-picardie.hal.science/hal-03590856>

Submitted on 6 Jun 2023

HAL is a multi-disciplinary open access archive for the deposit and dissemination of scientific research documents, whether they are published or not. The documents may come from teaching and research institutions in France or abroad, or from public or private research centers.

L'archive ouverte pluridisciplinaire **HAL**, est destinée au dépôt et à la diffusion de documents scientifiques de niveau recherche, publiés ou non, émanant des établissements d'enseignement et de recherche français ou étrangers, des laboratoires publics ou privés.



Distributed under a Creative Commons Attribution - NonCommercial 4.0 International License

World Journal of *Hepatology*

World J Hepatol 2020 December 27; 12(12): 1136-1371



MINIREVIEWS

- 1136** Spontaneous bacterial peritonitis due to carbapenemase-producing *Enterobacteriaceae*: Etiology and antibiotic treatment
Fiore M, Di Franco S, Alfieri A, Passavanti MB, Pace MC, Petrou S, Martora F, Leone S
- 1148** Molecular heterogeneity in intrahepatic cholangiocarcinoma
Ahn KS, Kang KJ
- 1158** Spectrum of esophageal motility disorders in patients with liver cirrhosis
Khalaf M, Castell D, Elias PS
- 1168** Metabolic associated fatty liver disease: Addressing a new era in liver transplantation
Gill MG, Majumdar A
- 1182** Liver injury in COVID-19: The hepatic aspect of the respiratory syndrome — what we know so far
Anirvan P, Bharali P, Gogoi M, Thuluvath PJ, Singh SP, Satapathy SK

ORIGINAL ARTICLE

Basic Study

- 1198** Cyclin-dependent kinase inhibitors p21 and p27 function as critical regulators of liver regeneration following 90% hepatectomy in the rat
Moniaux N, Lacaze L, Gothland A, Deshayes A, Samuel D, Faivre J
- 1211** Pivotal role of long non-coding ribonucleic acid-X-inactive specific transcript in regulating immune checkpoint programmed death ligand 1 through a shared pathway between miR-194-5p and miR-155-5p in hepatocellular carcinoma
Atwa SM, Handoussa H, Hosny KM, Odenthal M, El Tayebi HM

Case Control Study

- 1228** Validation of genetic variants associated with metabolic dysfunction-associated fatty liver disease in an ethnic Chinese population
Lee GH, Phyo WW, Loo WM, Kwok R, Ahmed T, Shabbir A, So J, Koh CJ, Hartono JL, Muthiah M, Lim K, Tan PS, Lee YM, Lim SG, Dan YY

Retrospective Cohort Study

- 1239** Comparison between hepatocellular carcinoma prognostic scores: A 10-year single-center experience and brief review of the current literature
Campigotto M, Giuffrè M, Colombo A, Visintin A, Aversano A, Budel M, Masutti F, Abazia C, Crocé LS

Retrospective Study

- 1258** Effects of proprotein convertase subtilisin/kexin type-9 inhibitors on fatty liver
Shafiq M, Walmann T, Nutalapati V, Gibson C, Zafar Y

- 1267** Timing of paracentesis and outcomes in hospitalized patients with decompensated cirrhosis
Tocia C, Dumitru A, Alexandrescu L, Popescu R, Dumitru E
- 1276** Bioelectrical impedance vector analysis evaluates cellularity and hydration in cirrhotic patients
Fernandes SA, Leonhardt LR, da Silva DM, Alves FD, Marroni CA
- 1289** Incidental biliary dilation in the era of the opiate epidemic: High prevalence of biliary dilation in opiate users evaluated in the Emergency Department
Barakat MT, Banerjee S

Clinical Trials Study

- 1299** Effect of non-alcoholic beer, diet and exercise on endothelial function, nutrition and quality of life in patients with cirrhosis
Macías-Rodríguez RU, Ruiz-Margáin A, Román-Calleja BM, Espin-Nasser ME, Flores-García NC, Torre A, Galicia-Hernández G, Ríos-Torres SL, Fernández-del-Rivero G, Orea-Tejeda A, Lozano-Cruz OA

Observational Study

- 1314** HIPPOCRATES® project: A proof of concept of a collaborative program for hepatitis C virus micro-elimination in a prison setting
Gaspar R, Liberal R, Tavares J, Morgado R, Macedo G

Prospective Study

- 1326** Subclinical proximal tubulopathy in hepatitis B: The roles of nucleot(s)ide analogue treatment and the hepatitis B virus
Brayette A, Essig M, Carrier P, Debette-Gratien M, Labrunie A, Alain S, Maynard M, Ganne-Carrié N, Nguyen-Khac E, Pinet P, De Ledinghen V, Renou C, Mathurin P, Vanlemmens C, Di Martino V, Gervais A, Foucher J, Isabelle FH, Vergniol J, Hourmand-Ollivier I, Cohen D, Duval X, Poynard T, Bardou M, Abergel A, Dao MT, Thévenot T, Hiriart JB, Canva V, Lassailly G, Aurières C, Boyer N, Thabut D, Bernard PH, Schnee M, Larrey D, Hanslik B, Hommel S, Jacques J, Loustaud-Ratti V

CASE REPORT

- 1341** Safety and efficacy of sofosbuvir/velpatasvir/voxilaprevir in post-liver transplant patients with previous direct-acting antiviral failure: Six case reports
Higley C, Hsu CC, Smith C, Nadella S, Lalos AT
- 1349** Successful hepatic resection for recurrent hepatocellular carcinoma after lenvatinib treatment: A case report
Yokoo H, Takahashi H, Hagiwara M, Iwata H, Imai K, Saito Y, Matsuno N, Furukawa H
- 1358** Hepatitis E virus re-infection accelerates hepatocellular carcinoma development and relapse in a patient with liver cirrhosis: A case report and review of literature
Lin XN, Lin QX, Li SM, Xie KP, Hou J, Chen R

LETTER TO THE EDITOR

- 1367** Autophagy related protein 9A increase in hepatitis B virus-associated hepatocellular carcinoma and the role in apoptosis
Kimkong I, Kunanopparat A

ABOUT COVER

Editor-in-Chief of *World Journal of Hepatology*, Dr. Nikolaos Pyrsopoulos, MD, PhD, MBA, FACP, AGAF, FAASLD, FRCP, FACC, currently serves Professor of Medicine, Professor of Physiology, Pharmacology and Neuroscience, and Chief of Gastroenterology & Hepatology at New Jersey Medical School and the Medical Director of Liver Transplantation for University Hospital (United States). Dr. Pyrsopoulos is board certified in the areas of Internal Medicine, Gastroenterology and Transplant Hepatology. Dr. Pyrsopoulos is a Fellow of the American College of Physicians, American Gastroenterological Association, Royal College of Physicians at Edinburgh, and American Association of the Study of Liver Diseases. He is also a member of various medical associations, such as the European Association of the Study of the Liver, American Society of Gastrointestinal Endoscopy, and American Society of Transplantation, among others. (L-Editor: Filipodia)

AIMS AND SCOPE

The primary aim of *World Journal of Hepatology* (*WJH*, *World J Hepatol*) is to provide scholars and readers from various fields of hepatology with a platform to publish high-quality basic and clinical research articles and communicate their research findings online.

WJH mainly publishes articles reporting research results and findings obtained in the field of hepatology and covering a wide range of topics including chronic cholestatic liver diseases, cirrhosis and its complications, clinical alcoholic liver disease, drug induced liver disease autoimmune, fatty liver disease, genetic and pediatric liver diseases, hepatocellular carcinoma, hepatic stellate cells and fibrosis, liver immunology, liver regeneration, hepatic surgery, liver transplantation, biliary tract pathophysiology, non-invasive markers of liver fibrosis, viral hepatitis.

INDEXING/ABSTRACTING

The *WJH* is now abstracted and indexed in PubMed, PubMed Central, Emerging Sources Citation Index (Web of Science), Scopus, China National Knowledge Infrastructure (CNKI), China Science and Technology Journal Database (CSTJ), and Superstar Journals Database.

RESPONSIBLE EDITORS FOR THIS ISSUE

Production Editor: Li-Li Wang; Production Department Director: Yun-Xiao Jian Wu; Editorial Office Director: Xiang Li.

NAME OF JOURNAL

World Journal of Hepatology

ISSN

ISSN 1948-5182 (online)

LAUNCH DATE

October 31, 2009

FREQUENCY

Monthly

EDITORS-IN-CHIEF

Nikolaos Pyrsopoulos, Ke-Qin Hu, Koo Jeong Kang

EDITORIAL BOARD MEMBERS

<https://www.wjnet.com/1948-5182/editorialboard.htm>

PUBLICATION DATE

December 27, 2020

COPYRIGHT

© 2020 Baishideng Publishing Group Inc

INSTRUCTIONS TO AUTHORS

<https://www.wjnet.com/bpg/gerinfo/204>

GUIDELINES FOR ETHICS DOCUMENTS

<https://www.wjnet.com/bpg/GerInfo/287>

GUIDELINES FOR NON-NATIVE SPEAKERS OF ENGLISH

<https://www.wjnet.com/bpg/gerinfo/240>

PUBLICATION ETHICS

<https://www.wjnet.com/bpg/GerInfo/288>

PUBLICATION MISCONDUCT

<https://www.wjnet.com/bpg/gerinfo/208>

ARTICLE PROCESSING CHARGE

<https://www.wjnet.com/bpg/gerinfo/242>

STEPS FOR SUBMITTING MANUSCRIPTS

<https://www.wjnet.com/bpg/GerInfo/239>

ONLINE SUBMISSION

<https://www.f6publishing.com>

Prospective Study

Subclinical proximal tubulopathy in hepatitis B: The roles of nucleot(s)ide analogue treatment and the hepatitis B virus

Anaïs Brayette, Marie Essig, Paul Carrier, Marilyne Debette-Gratien, Anaïs Labrunie, Sophie Alain, Marianne Maynard, Nathalie Ganne-Carrié, Eric Nguyen-Khac, Pauline Pinet, Victor De Ledinghen, Christophe Renou, Philippe Mathurin, Claire Vanlemmens, Vincent Di Martino, Anne Gervais, Juliette Foucher, Fouchard-Hubert Isabelle, Julien Vergniol, Isabelle Hourmand-Ollivier, Daniel Cohen, Xavier Duval, Thierry Poynard, Marc Bardou, Armand Abergel, Manh-Thong Dao, Thierry Thévenot, Jean-Baptiste Hiriart, Valérie Canva, Guillaume Lassailly, Christine Aurières, Nathalie Boyer, Dominique Thabut, Pierre-Henri Bernard, Matthieu Schnee, Dominique Larrey, Bertrand Hanslik, Séverine Hommel, Jérémie Jacques, Véronique Loustaud-Ratti

ORCID number: Anaïs Brayette 0000-0003-2253-8111; Marie Essig 0000-0002-2030-5616; Paul Carrier 0000-0001-9750-2506; Marilyne Debette-Gratien 0000-0001-6039-1355; Anaïs Labrunie 0000-0002-3285-8015; Sophie Alain 0000-0002-9787-1421; Marianne Maynard 0000-0001-9172-7050; Nathalie Ganne-Carrié 0000-0002-7351-5027; Eric Nguyen-Khac 0000-0001-8672-4146; Pauline Pinet 0000-0001-9259-6857; Victor De Ledinghen 0000-0001-6414-1951; Christophe Renou 0000-0002-5834-2391; Philippe Mathurin 0000-0003-3447-2025; Claire Vanlemmens 0000-0002-2048-3324; Vincent Di Martino 0000-0002-2022-690X; Anne Gervais 0000-0001-8593-6083; Juliette Foucher 0000-0003-2712-7469; Fouchard-Hubert Isabelle 0000-0002-7420-7026; Julien Vergniol 0000-0002-1109-1636; Isabelle Hourmand-Ollivier 0000-0002-5254-2464; Daniel Cohen 0000-0001-7461-6375; Xavier Duval 0000-0003-1079-4230; Thierry Poynard 0000-0002-2050-640X; Marc Bardou 0000-0003-0028-1837; Armand Abergel 0000-0001-7480-1052; Manh-Thong Dao 0000-0001-7043-4662; Thierry Thévenot 0000-0003-3974-2784; Jean-Baptiste Hiriart 0000-0002-8863-8230; Valérie Canva

Anaïs Brayette, Paul Carrier, Marilyne Debette-Gratien, Jérémie Jacques, Véronique Loustaud-Ratti, U1248 INSERM, Department of Hepatology and Gastroenterology, Univ. Limoges, CHU Limoges, Limoges F-87000, France

Marie Essig, U1248 INSERM, Department of Nephrology and Transplantation, CHU Limoges, Limoges F-87000, France

Anaïs Labrunie, Department of Center of Epidemiology, Biostatistics and Research Methodology, CHU Limoges, Limoges F-87000, France

Sophie Alain, U1092 INSERM, Department of Virology, CHU Limoges, Limoges F-87000, France

Marianne Maynard, Department of Hepatology, Croix-Rousse University Hospital of Lyon, Lyon 69004, France

Nathalie Ganne-Carrié, Department of Hepatology, Jean Verdier University Hospital of Bondy, Bondy 93140, France

Eric Nguyen-Khac, Department of Hepato-Gastroenterology, Amiens University Hospital, Amiens 80054, France

Pauline Pinet, Department of Infectious Diseases, CHU Limoges, Limoges F-87000, France

Victor De Ledinghen, Juliette Foucher, Julien Vergniol, Jean-Baptiste Hiriart, Department of Hepatology, Haut Leveque Hospital, Bordeaux University Hospital, Pessac 33604, France

Christophe Renou, Department of Gastroenterology, Hyeres Hospital, Hyeres 83407, France

Philippe Mathurin, Valérie Canva, Guillaume Lassailly, Department of Hepato-Gastroenterology, Claude Huriez University Hospital, Lille 59037, France

Claire Vanlemmens, Vincent Di Martino, Thierry Thévenot, Department of Hepatology, Jean

0000-0003-4364-8133; Guillaume Lassailly 0000-0002-6955-244X; Christine Aurières 0000-0003-4732-104X; Nathalie Boyer 0000-0003-1873-1701; Dominique Thabut 0000-0002-9658-0323; Pierre-Henri Bernard 0000-0003-0154-0722; Matthieu Schnee 0000-0001-6152-405X; Dominique Larrey 0000-0002-0892-3489; Bertrand Hanslik 0000-0002-1803-0799; Séverine Hommel 0000-0001-7335-4772; Jérémie Jacques 0000-0003-4105-6804; Véronique Loustaud-Ratti 0000-0002-6951-0784.

Author contributions: Brayette A, Essig M, Carrier P, Labrunie A, and Loustaud-Ratti V analyzed and interpreted the data; Brayette A, Carrier P and Loustaud-Ratti V drafted the manuscript; Loustaud-Ratti V and Essig M carried out study concept and design; Carrier P, Debette-Gratien M, Alain S, Maynard M, Ganne-Carrié N, Khac EN, Pinet P, De Ledinghen V, Renou C, Mathurin P, Vanlemmens C, Di Martino V, Gervais A, Foucher J, Isabelle FH, Vergniol J, Hourmand-Ollivier I, Cohen D, Duval X, Poynard T, Bardou M, Abergel A, Dao MT, Thevenot T, Hiriart JB, Canva V, Lassailly G, Aurières C, Boyer N, Thabut D, Bernard PH, Schnee M, Larrey D, Hanslik B, Hommel S, Jacques J, and Loustaud-Ratti V collected the data; Labrunie A performed statistical analysis; Loustaud-Ratti V obtained funding; All authors critically revised the manuscript.

Supported by Bristol Myers Squibb, France.

Institutional review board

statement: The study was reviewed and approved by the French Institutional Review Board AFSSAPS, No. A111378-30.

Conflict-of-interest statement: Pr. Loustaud-Ratti reports grants from Bristol Myers Squibb, France, during the conduct of the study; personal fees from GILEAD, personal fees from ABBVIE, personal fees from MSD, grants from BMS, outside the submitted work. Dr. Carrier reports non-financial support from GILEAD, non-financial support from

Minjoz University Hospital, Besançon 25030, France

Anne Gervais, Xavier Duval, Department of Infectious Diseases, Bichat University Hospital, Paris 75018, France

Fouchard-Hubert Isabelle, Department of Hepatology, University Hospital of Angers, Angers 49933, France

Isabelle Hourmand-Ollivier, Manh-Thong Dao, Department of Hepato-Gastroenterology and Nutrition, University Hospital of Caen, Caen 14033, France

Daniel Cohen, Department of General Medecine, University Hospital of Caen, Caen 14000, France

Thierry Poynard, Dominique Thabut, Department of Hepatology, La Pitié-Salpêtrière University Hospital, Paris 75651, France

Marc Bardou, Department of Hepatology and Gastroenterology, Dijon University Hospital, Dijon 21079, France

Armand Abergel, Department of Hepatology and Gastroenterology, Estaing University Hospital, Clermont Ferrand 63003, France

Christine Aurières, Nathalie Boyer, Department of Hepatology, Beaujon University Hospital, Clichy 92110, France

Pierre-Henri Bernard, Department of Hepatology, Saint-André University Hospital, Bordeaux 33000, France

Matthieu Schnee, Department of Hepatology and Gastroenterology, La Roche-Sur-Yon Hospital Center, La Roche-Sur-Yon 85000, France

Dominique Larrey, Department of Hepatology and Gastroenterology, University Hospital of Montpellier, Montpellier 34295, France

Bertrand Hanslik, Department of Addictology, Hospital of Montpellier, Montpellier 34295, France

Séverine Hommel, Department of Hepatology and Gastroenterology, Hospital Center of Aix en Provence, Aix-en-Provence 13100, France

Corresponding author: Véronique Loustaud-Ratti, MD, PhD, Professor, U1248 INSERM, Department of Hepatology and Gastroenterology, Univ. Limoges, CHU Limoges, 2, Avenue Martin Luther King, Limoges F-87000, France. veronique.loustaud-ratti@unilim.fr

Abstract

BACKGROUND

The recommended monitoring tools for evaluating nucleot(s)ide analogue renal toxicity, such as estimated glomerular filtration rate (eGFR) and phosphatemia, are late markers of proximal tubulopathy. Multiple early markers are available, but no consensus exists on their use.

AIM

To determine the 24 mo prevalence of subclinical proximal tubulopathy (SPT), as defined with early biomarkers, in treated *vs* untreated hepatitis B virus (HBV)-monoinfected patients.

METHODS

A prospective, non-randomized, multicenter study of HBV-monoinfected patients with a low number of renal comorbidities was conducted. The patients were separated into three groups: Naïve, starting entecavir (ETV) treatment, or starting tenofovir disoproxil (TDF) treatment. Data on the early markers of SPT, the eGFR and phosphatemia, were collected quarterly. SPT was defined as a maximal tubular reabsorption of phosphate/eGFR below 0.8 mmol/L and/or uric acid fractional excretion above 10%. The prevalence and cumulative incidence of SPT

ABBVIE, non-financial support from MSD, non-financial support from BMS, outside the submitted work. Other authors declare no conflict of interest.

Data sharing statement: Technical appendix, statistical code, and dataset available from the corresponding author at veronique.loustaud-ratti@unilim.fr. Participants gave informed consent for data sharing.

CONSORT 2010 statement: The authors have read the CONSORT 2010 Statement, and the manuscript was prepared and revised according to the CONSORT 2010 Statement.

Open-Access: This article is an open-access article that was selected by an in-house editor and fully peer-reviewed by external reviewers. It is distributed in accordance with the Creative Commons Attribution NonCommercial (CC BY-NC 4.0) license, which permits others to distribute, remix, adapt, build upon this work non-commercially, and license their derivative works on different terms, provided the original work is properly cited and the use is non-commercial. See: <http://creativecommons.org/licenses/by-nc/4.0/>

Manuscript source: Invited manuscript

Specialty type: Gastroenterology and hepatology

Country/Territory of origin: France

Peer-review report's scientific quality classification

Grade A (Excellent): 0
Grade B (Very good): 0
Grade C (Good): C, C, C, C
Grade D (Fair): D
Grade E (Poor): E

Received: June 11, 2020

Peer-review started: June 11, 2020

First decision: September 18, 2020

Revised: October 7, 2020

Accepted: October 28, 2020

Article in press: October 28, 2020

Published online: December 27,

at month 24 (M24) were calculated. Quantitative data were analyzed using analyses of variance or Kruskal-Wallis tests, whereas chi-squared or Fisher's exact tests were used to analyze qualitative data. Multivariate analyses were used to adjust for any potential confounding factors.

RESULTS

Of the 196 patients analyzed, 138 (84 naïve, 28 starting ETV, and 26 starting TDF) had no SPT at inclusion. At M24, the prevalence of SPT was not statistically different between naïve and either treated group (21.1% *vs* 30.7%, $P < 0.42$ and 50.0% *vs* 30.7%, $P = 0.32$ for ETV and TDF, respectively); no patient had an eGFR lower than 50 mL/min/1.73 m² or phosphatemia less than 0.48 mmol/L. In the multivariate analysis, no explanatory variables were identified after adjustment. The cumulative incidence of SPT over 24 mo (25.5%, 13.3%, and 52.9% in the naïve, ETV, and TDF groups, respectively) tended to be higher in the TDF group *vs* the naïve group (hazard ratio: 2.283, $P = 0.05$). SPT-free survival at M24 was 57.6%, 68.8%, and 23.5% for the naïve, ETV, and TDF groups, respectively. The median survival time without SPT, evaluated only in the TDF group, was 5.9 mo.

CONCLUSION

The prevalence and incidence of SPT was higher in TDF-treated patients compared to naïve patients. SPT in the naïve population suggests that HBV can induce renal tubular toxicity.

Key Words: Hepatitis B virus; Proximal tubulopathy; Biomarkers; Renal insufficiency; Nucleoside analogues

©The Author(s) 2020. Published by Baishideng Publishing Group Inc. All rights reserved.

Core Tip: The objective of this prospective, multicenter study was to determine the 24 mo prevalence and incidence of subclinical proximal tubulopathy (SPT) in hepatitis B virus (HBV)-monoinfected patients that were either treatment-naïve or treated with nucleot(s)ide analogues. Data on early SPT markers, the estimated glomerular filtration rate and phosphatemia, were collected quarterly from 196 patients. The prevalence and incidence of SPT was higher in tenofovir disoproxil-treated patients compared to naïve patients. The median survival time without SPT (time during which more than 50% of the patients remained SPT-free), evaluated only in the tenofovir disoproxil-treated group, was 5.9 mo. SPT was detected in the naïve population, indicating possible HBV-induced toxicity in renal tubules.

Citation: Brayette A, Essig M, Carrier P, Debette-Gratien M, Labrunie A, Alain S, Maynard M, Ganne-Carrié N, Nguyen-Khac E, Pinet P, De Ledinghen V, Renou C, Mathurin P, Vanlemmens C, Di Martino V, Gervais A, Foucher J, Isabelle FH, Vergniol J, Hourmand-Ollivier I, Cohen D, Duval X, Poynard T, Bardou M, Aberger A, Dao MT, Thévenot T, Hiriart JB, Canva V, Lassailly G, Aurières C, Boyer N, Thabut D, Bernard PH, Schnee M, Larrey D, Hanslik B, Hommel S, Jacques J, Loustaud-Ratti V. Subclinical proximal tubulopathy in hepatitis B: The roles of nucleot(s)ide analogue treatment and the hepatitis B virus. *World J Hepatol* 2020; 12(12): 1326-1340

URL: <https://www.wjgnet.com/1948-5182/full/v12/i12/1326.htm>

DOI: <https://dx.doi.org/10.4254/wjh.v12.i12.1326>

INTRODUCTION

Chronic hepatitis B virus (HBV) infection is associated with significant morbidity and mortality due to cirrhosis and hepatocellular carcinoma^[1,2]. Current second-generation antiviral agents are efficient, as they have a high barrier to resistance. They include nucleosidic [*e.g.*, entecavir (ETV)] and nucleotidic [*e.g.*, tenofovir disoproxil (TDF) and tenofovir alafenamide (TAF)] analogues. Nevertheless, the persistence of HBV within hepatocytes in the form of covalently closed circular deoxyribonucleic acid and the

2020

P-Reviewer: Ahmed M, Fernandez-Rodriguez CM, Kreisel W**S-Editor:** Fan JR**L-Editor:** Filipodia**P-Editor:** Wang LL

low probability of hepatitis B surface antigen (HBsAg) clearance necessitates long-term or even life-long treatment. Currently available antiviral agents are eliminated in an active form *via* glomerular filtration and active tubular secretion. Their dosages must be adjusted when the estimated glomerular filtration rate (eGFR) falls under 50 mL/min/1.73 m². Therefore, long-term renal tolerance to antivirals is an important issue.

Although tubular toxicity is well-described in human immunodeficiency virus (HIV) patients treated with TDF^[3-5], less data exist for hepatitis B mono-infection. Registration trials report good tolerance profiles, but real-life studies recount cases of lactic acidosis with ETV treatment, and impaired renal function and rare cases of Fanconi syndrome are reported with TDF^[6-8]. Indeed, these two compounds weakly inhibit host mitochondrial polymerase and may induce tubulopathy^[9]. TDF toxicity may also result from tubular secretion of its active form (tenofovir) and its potential interaction with the metabolism of tubular cells^[3,4,9]. Furthermore, transport proteins may interact with TDF, increasing its intracellular concentration and consequently, its toxicity^[10-12]. Long-term consequences of tubular dysfunction include hypophosphatemia (secondary to hyperphosphaturia), osteomalacia, osteoporosis, and renal failure.

Most studies on nucleot(s)ide analogue (NA) renal toxicity are based on assessments of eGFR and phosphatemia, which are late markers of proximal tubulopathy. Various early markers are available (*e.g.*, non-diabetic glycosuria, hyperaminoaciduria, β_2 -microglobulinuria, and cystinuria), but no consensus exists on their use^[3,4,13,14].

In this study, two early, easy-to-perform, and inexpensive markers were selected: Maximal tubular reabsorption of phosphate per unit volume of eGFR (TmPi/eGFR) and fractional excretion rate of uric acid (FEUA). The objective was to detect and monitor the evolution of subclinical proximal tubulopathy (SPT) over a 2-year period in three populations of HBV-mono-infected patients. The three populations included those who were treatment naïve or those starting treatment with either ETV or TDF.

MATERIALS AND METHODS

Patient selection

A prospective, non-randomized phase IV study involving 20 French centers was conducted. Adult patients with HBV mono-infection and an eGFR above 50 mL/min/1.73 m² were included. They were separated into three populations: Naïve, ETV treatment, or TDF treatment, depending on the investigator's choice. The following exclusion criteria were employed in this study: Patients already receiving the planned treatment; those who have hepatocellular carcinoma; those coinfected with the hepatitis C virus, hepatitis D virus, or HIV; those with serum phosphate levels < 0.48 mmol/L; and pregnant or breast-feeding women.

Data collection

On day 0 (D0), data on the following characteristics were collected: Age, gender, ethnicity, body mass index (BMI), potentially nephrotoxic treatments (*e.g.*, diuretics, non-steroidal anti-inflammatory drugs), prior anti-HBV treatment, viral load, and fibrosis stage. On D0 and then every 3 mo thereafter until month 24 (M24), the eGFR, phosphatemia, 25-hydroxyvitamin D3 [25(OH)D3] vitamin levels, and dipstick test levels were measured. The TmPi/eGFR and FEUA were calculated. Patients with serum 25(OH)D3 vitamin < 30 ng/mL were supplemented systemically.

The monitoring visits were planned according to the patients' usual follow-up appointments. Treatment choices and any modifications made during the study complied with the recommendations made by the European Association for the Study of the Liver in 2012^[15].

TmPi/eGFR and FEUA calculations

The main objective of this study was to determine the prevalence of SPT at M24 in the three groups. SPT was defined as a TmPi/eGFR below 0.8 mmol/L and/or FEUA above 10%.

TmPi/eGFR was estimated according to Bijvoet's diagram and included serum and urine phosphate and creatinine measured from fasting morning blood and urine samples. The eGFR was estimated with a simplified Modification of Diet in Renal Disease formula. FEUA was calculated as follows: [(urine uric acid × serum creatinine)/(serum uric acid × urine creatinine)] × 100%. If data at inclusion (M0) and M24 were missing, M3 and M21 data were used, respectively.

Prevalence and incidence data

The prevalence of SPT resulting from anti-HBV treatment prior to inclusion, if any, was retrospectively described.

At M24, the prevalence of $\text{eGFR} < 50 \text{ mL/min/1.73 m}^2$ or serum phosphate $< 0.48 \text{ mmol/L}$ and the cumulative incidence of SPT were calculated. High urine calcium defined by a urine calcium/blood calcium ratio above 0.5 mmol/mmol was used as a marker of bone involvement at M24.

Ethical considerations

The study was conducted in full compliance with the European and French guidelines of good clinical practices. It was approved by the French Institutional Review Board and the Independent Ethics Committee of Limoges. The study is registered with ClinicalTrials.gov under the number NCT01500265. Eligible patients were given information describing the study in readily understandable language detailing the investigational nature of the study. All patients gave written informed consent for study participation and blood sample conservation.

Statistical methods

Statistical analyses were performed by the Methodological, Epidemiological, and Biostatistical Research Center of the University Hospital of Limoges, using SAS V9.3® software (SAS Institute; Cary, NC, United States). The package *survival* in R v3.2.2 software was used for survival analyses.

Quantitative variables were described using means and standard deviations, medians, and interquartile ranges. Analyses of variance or Kruskal-Wallis tests were used to compare treatment-naïve patients to ETV- and TDF-treated patients.

Qualitative variables were described using the numbers and percentages associated with their 95% confidence intervals (CIs). They were compared using chi-squared or Fisher's exact tests. These tests were also performed to compare the prevalence of SPT at inclusion between previously-treated patients and patients who had not received any antiviral treatment before inclusion, as well as the M24 prevalence of renal insufficiency, hypophosphatemia, or hypercalciuria, depending on the occurrence of SPT during follow-up.

P values less than 0.05 were considered to denote significance except for the main objective and the differences between the naïve group and each treatment group at inclusion, which were deemed significant at $P < 0.025$.

The SPT-free survival curves of the different groups over the 24 mo were plotted using the Kaplan-Meier method. The log-rank test was used to compare survival curves between the groups.

Analyses were adjusted to account for potential confounders. For the main analysis (*i.e.* prevalence of SPT at M24) a multivariate binary logistic regression model was used, whereas a Cox model was used for the cumulative incidence of SPT. The models included variables associated with *P* values of less than 0.2 in the univariate analysis; variables were strained using the step-by-step method.

RESULTS

Study population

Data were obtained from 214 patients between December 2011 and December 2013; 18 were excluded from the analysis (Figure 1). The final dataset was compiled from 196 patients: 116 in the naïve group, 38 in the ETV group, and 42 in the TDF group.

Prevalence of SPT at baseline with or without previous HBV treatment

Of the 196 patients analyzed, 22 (11.2%) had received previous HBV therapy: Adefovir (36%), lamivudine (27.3%), or both (36.7%). At baseline, 40 patients (22.5%) presented with SPT. SPT prevalence did not differ significantly between previously treated and untreated patients (21.5% *vs* 30%, respectively; $P = 0.40$).

SPT prevalence at M24

Forty patients met the criteria of SPT at D0. Eighteen patients with incomplete biological reports, including at D0, were further excluded. The final number of patients with no SPT at D0 was 138: 84 in the naïve group, 28 in the ETV group, and 26 in the TDF group (Figure 1). Clinical and para-clinical characteristics of these 138 patients at inclusion are summarized in Tables 1 and 2.

Table 1 Characteristics of the patients with no subclinical proximal tubulopathy at on day 0

Variables	Global (<i>n</i> = 138); <i>n</i> (%) ou; median (Q1; Q3); (<i>n</i>) (min-max)	ETV (<i>n</i> = 28); <i>n</i> (%) ou; median (Q1; Q3) (<i>n</i>) (min-max)	Naive (<i>n</i> = 84); <i>n</i> (%) ou; median (Q1; Q3) (<i>n</i>) (min-max)	TDF (<i>n</i> = 26); <i>n</i> (%) ou; median (Q1; Q3) (<i>n</i>) (min-max)	<i>P</i> value; ETV vs naive	<i>P</i> value; TDF vs naive
Male	72 (52.2%)	19 (67.9%)	39 (46.4%)	14 (53.8%)	0.05 ¹	0.51 ¹
Age in yr	37.5 (29; 47); (<i>n</i> = 138); (18-74)	45.5 (31; 57.5); (<i>n</i> = 28); (18-66)	36.5 (29; 45); (<i>n</i> = 84); (18-74)	35.5 (24; 42) (<i>n</i> = 26); (21-56)	0.08 ²	0.22 ²
BMI in kg/m ²	24.5 (21.3; 27.8); (<i>n</i> = 115); (16.6-38.8)	25 (22.2; 29); (<i>n</i> = 24); (16.6-36.3)	24.8 (21.7; 28.7); (<i>n</i> = 71); (17.8-38.8)	21.8 (19; 26.5); (<i>n</i> = 20); (18-35.2)	0.91 ²	0.02 ²
Ethnicity						
-African	65 (47.1%)	7 (25.0%)	44 (52.4%)	14 (53.8%)	0.003 ³	0.05 ³
-Asian	16 (11.6%)	7 (25.0%)	4 (4.8%)	5 (19.2%)		
-White	57 (41.3%)	14 (50.0%)	36 (42.9%)	7 (26.9%)		
Phases of infection						
-HBeAg + chronic infection	6 (4.3%)	3 (10.7%)	3 (3.6%)	0 (0.0%)	< 0.0001 ³	< 0.0001 ³
-HBeAg + chronic hepatitis	15 (10.9%)	6 (21.4%)	3 (3.6%)	6 (23.1%)		
-HBeAg-chronic infection	60 (43.5%)	1 (3.6%)	57 (67.9%)	2 (7.7%)		
-HBeAg-chronic hepatitis	57 (41.3%)	18 (64.3%)	21 (25.0%)	18 (69.2%)		
Diabetes	9 (6.5%)	5 (17.9%)	4 (4.8%)	0 (0.0%)	0.04 ³	0.57 ³
High blood pressure	25 (18.1%)	9 (32.1%)	12 (14.3%)	4 (15.4%)	0.04 ¹	1.00 ³
Renal insufficiency	1 (0.7%)	0 (0%)	1 (1.2%)	0 (0%)	1.00 ³	1.00 ³
Viral load						
-PCR < 2000 UI/mL	69 (61.6%)	3 (15.8%)	60 (77.9%)	6 (37.5%)	< 0.0001 ³	< 0.0001 ³
-PCR ≥ 2000 et < 20000 UI/mL	22 (19.6%)	6 (31.6%)	16 (20.8%)	0 (0%)		
-PCR ≥ 20000 UI/mL and < 7 (log)	13 (11.6%)	6 (31.6%)	1 (1.3%)	6 (37.5%)		
PCR > 7 (log)	8 (7.1%)	4 (21.1%)	0 (0%)	4 (2.5%)	< 0.0001 ²	< 0.0001 ³
ALAT UI/L	25 (17; 36); (<i>n</i> = 133); (7- 214)	40 (25; 57); (<i>n</i> = 27); (17- 148)	19 (15; 26); (<i>n</i> = 83); (7- 89)	46 (28; 70); (<i>n</i> = 23); (10- 214)		
Fibrosis ⁴						
-F0/F1 ⁵	103 (84.4%)	13 (56.5%)	73 (94.8%)	17 (77.3%)	< 0.0001 ³	0.0067 ³
-F2	5 (4.1%)	2 (8.7%)	2 (2.6%)	1 (4.5%)		
-F2/F3	8 (6.6%)	6 (26.1%)	2 (2.6%)	0 (0%)		
-F3	1 (0.8%)	0 (0.0%)	0 (0%)	1 (4.5%)		
-F3/F4						
-F4	5 (4.1%)	2 (8.7%)	0 (0%)	3 (13.6%)		
Fibrosis F0/F1 vs F2						
-F0/F1	103 (84.4%)	13 (56.5%)	73 (94.8%)	17 (77.3%)	< 0.0001 ³	0.02 ³
-≥ F2	19 (15.6%)	10 (43.5%)	4 (5.2%)	5 (22.7%)		
Previous HBV therapy	14 (10.1%)	5 (17.9%)	0 (0.0%)	9 (34.6%)	0.0007 ³	< 0.0001 ³

Nephrotoxic drugs	12 (6.1%)	4 (10.5%)	6 (5.2%)	2 (4.8%)	0.22 ³	1.00 ³
-------------------	-----------	-----------	----------	----------	-------------------	-------------------

¹Chi² test.²Mann-Whitney test.³Fisher's exact test.⁴Evaluated by liver biopsy or FibroScan.⁵METAVIR classification. BMI: Body mass index; ALAT: Alanine aminotransferase; ETV: Entecavir; HbeAG: Hepatitis B e-antigen; HBV: Hepatitis B virus; Max: Maximum; Min: Minimum; Q1: First quartile; Q3: Third quartile; TDF: Tenofovir disoproxil.**Table 2 Clinical characteristics of the patients with no subclinical proximal tubulopathy at on day 0**

	Global population (<i>n</i> = 138); median (Q1; Q3); (<i>n</i>) (min-max)	ETV group; (<i>n</i> = 28); median (Q1; Q3); (<i>n</i>) (min-max)	Naïve group; (<i>n</i> = 84); median (Q1; Q3); (<i>n</i>) (min-max)	TDF group; (<i>n</i> = 26); median (Q1; Q3); (<i>n</i>) (min-max)	<i>P</i> value; ETV vs naïve	<i>P</i> value; TDF vs naïve
Phosphatemia, mmol/L	1.1 (1.0; 1.2); (<i>n</i> = 135); (0.6-1.4)	1.1 (1.0; 1.1); (<i>n</i> = 26); (0.9-1.3)	1.0 (1.0; 1.2); (<i>n</i> = 83); (0.7-1.4)	1.0 (0.9; 1.2); (<i>n</i> = 26); (0.6-1.2)	0.40 ¹	0.98 ¹
Plasma creatinine, μmol/L	73 (58; 85); (<i>n</i> = 137); (37.5-114.9)	78.4 (66; 84); (<i>n</i> = 28); (51-114.9)	71 (58; 87); (<i>n</i> = 83); (37.5-113)	76.9 (57.5; 87); (<i>n</i> = 26); (38-98)	0.23 ²	0.77 ²
eGFR (MDRD), mL/min/1.73 m ²	94.5 (82.6; 107.6); (<i>n</i> = 137); (58.6-169.1)	91 (84.2; 101); (<i>n</i> = 28); (62.7-141.3)	94.8 (80.7; 108.1); (<i>n</i> = 83); (58.6-151.1)	95.4 (84.3; 108.4); (<i>n</i> = 26); (70.2-169.1)	0.37 ²	0.65 ²
25(OH)D3, ng/mL	15.9 (9.9; 22.2); (<i>n</i> = 130); (3.1-55.2)	16.8 (12.6; 24.8); (<i>n</i> = 26); (5-55.2)	14.8 (9.4; 21); (<i>n</i> = 81); (4-42.1)	15.3 (9.8; 22.7); (<i>n</i> = 23); (3.1-36.9)	0.27 ²	0.95 ²
TmPi/eGFR, mmol/L	1 (0.9; 1.1); (<i>n</i> = 181); (0.4-1.9)	1 (0.9; 1.2); (<i>n</i> = 34); (0.7-1.8)	1 (0.9; 1.1); (<i>n</i> = 111); (0.4-1.9)	1 (0.8; 1.2); (<i>n</i> = 36); (0.6-1.5)	0.24 ²	0.86 ²
FEUA, %	5.8 (4.5; 7.1); (<i>n</i> = 112); (2.2-9.7)	5.9 (4.7; 7.5); (<i>n</i> = 23); (2.7-9.1)	5.8 (4.4; 7); (<i>n</i> = 69); (2.2-9.3)	5.5 (4.5; 6.7); (<i>n</i> = 20); (3.8-9.7)	0.64 ¹	0.95 ¹

¹Student's test.²Mann-Whitney test. 25(OH)D3: 25-hydroxyvitamin D3; eGFR: Estimated glomerular filtration rate; ETV: Entecavir; FEUA: Fractional excretion rate of uric acid; Max: Maximum; Min: Minimum; Q1: First quartile; Q3: Third quartile; TDF: Tenofovir disoproxil.

Statistically significant differences in chronic hepatitis (*vs* infection), HBsAg-status, viremia levels, alanine aminotransferase (ALT) levels, and fibrosis stage were found between the treated groups (ETV or TDF) *vs* the naïve group. Some unexpected differences were also observed. Compared to the naïve group, the ETV group contained more Asian patients, and patients in the TDF group had lower BMIs. These differences were accounted for in the adjusted analyses.

Of the 138 patients without SPT at baseline, 45 had missing data at M24 and had to be excluded from the analysis of SPT prevalence at that timepoint. Therefore, the main analysis included data from 93 patients, with 62 in the naïve group, 19 in the ETV group, and 12 in the TDF group. Accordingly, the overall prevalence of SPT at M24 was 31.2% (*n* = 29/93; 95%CI: 22.0–41.6). Among the three treatment groups, the prevalence was 30.7% (*n* = 19/62; 95%CI: 19.6–43.7) in the naïve group, 21.1% (*n* = 4/19; 95%CI: 6.1–45.6) in the ETV group, and 50% (*n* = 6/12; 95%CI: 21.1–78.9) in the TDF group. No statistically significant differences were observed between the naïve group and the ETV (*P* = 0.42) or the TDF group (*P* = 0.42) (Table 3).

Adjusted analyses of SPT prevalence at 24 mo

Potential confounding factors among the different groups were assayed at baseline: Age, gender, ethnicity, virological status, diabetes, hypertension, potential nephrotoxic drugs, ALT and viremia levels, fibrosis stage, and previous HBV therapy (Table 1). Ethnicity was not included in the model because no Asian patient had SPT at M24. Table 4 contains the results of the univariate models given as raw odds ratios (ORs). Variables associated with *P* values of less than 0.20 (gender and age) were tested in a multivariate model comparing ETV and naïve groups. The effect of group on the presence or absence of SPT at M24 was not affected by any adjustment variables (OR = 0.60; 95%CI: 0.17–2.06; *P* = 0.42). No multivariate model could be built to compare TDF and naïve groups (no variable had a *P* value less than 0.20).

Finally, group membership had no significant effect on the presence or absence of SPT at M24 (OR = 2.26; 95%CI: 0.65–7.93; *P* = 0.20).

Table 3 Subclinical proximal tubulopathy prevalence at month 24 in the entecavir, naïve and tenofovir disoproxil groups

	Global (<i>n</i> = 138); <i>n</i> (%) (95%CI)	ETV (<i>n</i> = 28); <i>n</i> (%) (95%CI)	Naïve (<i>n</i> = 84); <i>n</i> (%) (95%CI)	TDF (<i>n</i> = 26); <i>n</i> (%) (95%CI)	<i>P</i> value; ETV vs naïve	<i>P</i> value; TDF vs naïve
Missing values	45	9	22	14		
SPT prevalence at M24; (<i>n</i> = 93)	29 (31.2%); (22.0-41.6)	4 (21.1%); (6.1-45.6)	19 (30.7%); (19.6-43.7)	6 (50.00%); (21.1-78.9)	0.42 ¹	0.32 ²

¹Chi² test.²Fisher's exact test. CI: Confidence interval; ETV: Entecavir; SPT: Subclinical proximal tubulopathy; TDF: Tenofovir disoproxil.**Table 4 Potential confounding factors at baseline susceptible to influence the prevalence of subclinical proximal tubulopathy at month 24 between the different groups in univariate analysis**

		HR (95%CI)	<i>P</i> value	Global <i>P</i> value
Fibrosis	≥ F2 vs F0/F1	1.09 (0.32-3.67)	0.89	0.89
Group	ETV vs naïve	0.41 (0.09-1.83)	0.24	0.043
	TDF vs naïve	2.28 (0.98-5.30)	0.05	
Sex	Female vs male	0.85 (0.38-1.87)	0.68	0.68
Ethnicity	African vs White	0.91 (0.41-2.04)	0.83	0.63
	Asian vs White	0.36 (0.05-2.84)	0.33	
Diabetes	Yes vs no	0.63 (0.08-4.67)	0.65	0.65
Previous hypertension	Yes vs no	1.26 (0.50-3.17)	0.63	0.63
Viral load	Low vs very low	0.94 (0.30-2.89)	0.91	0.46
	Elevated vs very low	2.38 (0.77-7.34)	0.13	
	Very elevated vs very low	1.40 (0.40-4.93)	0.60	
Previous HBV therapy	Yes vs no	1.11 (0.33-3.74)	0.86	0.86
Age at inclusion		1.02 (0.98-1.05)		0.35
BMI at inclusion		0.98 (0.89-1.08)		0.67
ALAT at inclusion		1.00 (0.99-1.01)		0.67

ALAT: Alanine aminotransferase; BMI: Body mass index; ETV: Entecavir; HBV: Hepatitis B virus; HR: Hazard ratio; TDF: Tenofovir disoproxil.

Cumulative incidence of SPT over 24 mo

The overall survival rate of SPT-free patients at M24 was 52.2% (95%CI: 38.3-71.2). Among the three groups, the survival rates were 57.6% (95%CI: 47.1-79.6) in the naïve group, 68.8% (95%CI: 38.1-100) in the ETV group, and 23.5% (95%CI: 5.3-100) in the TDF group.

The median survival time, corresponding to the time during which more than 50% of the patients remained SPT-free, was analyzable only in the TDF group. The median survival time in this group was 5.9 mo. The occurrence of SPT in the TDF group differed significantly from that in the other two groups (log-rank test; *P* = 0.0283; Figure 2).

Adjusted analysis of cumulative incidence of SPT over 24 mo

No multivariate analysis was conducted as no potential confounding factors had *P* < 0.20. The univariate model found no significant effects between ETV and naïve groups [hazard ratio (HR): 0.41; 95%CI: 0.09-1.83; *P* = 0.24]. The HR associated with the TDF group vs the naïve group was 2.28 (95%CI: 0.98-5.30; *P* = 0.0546). Thus, TDF treatment tended to be associated with TDF-induced tubular toxicity.

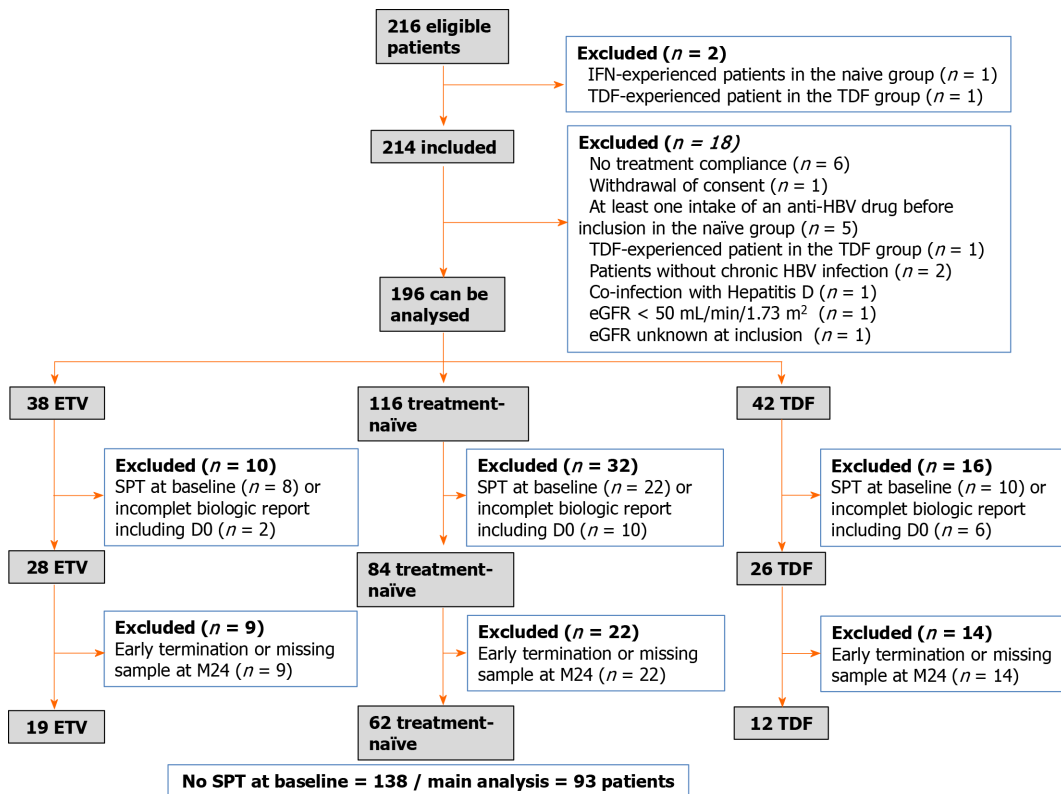


Figure 1 Data were obtained from 214 patients between December 2011 and December 2013; 18 were excluded from the analysis. eGFR: Estimated glomerular filtration rate; ETV: Entecavir; HBV: Hepatitis B virus; IFN: Interferon alpha; TDF: Tenofovir disoproxil; SPT: Subclinical proximal tubulopathy.

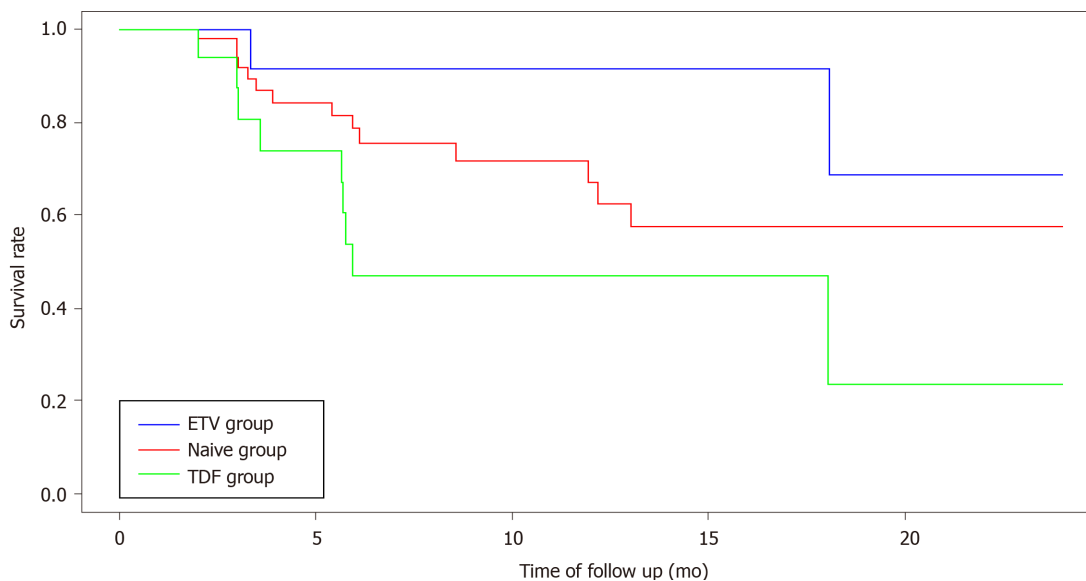


Figure 2 Kaplan Meier curves for free subclinical proximal tubulopathy survival among the different groups (entecavir, naive, tenofovir disoproxil). ETV: Entecavir; TDF: Tenofovir disoproxil.

Prevalence of impaired renal function (eGFR < 50 mL/min/1.73 m²),

hypophosphatemia (< 0.48 mmol/L), and hypercalciuria (> 0.5 mmol/mmol) at M24

In patients without SPT at baseline, no renal function impairment or hypophosphatemia was observed at M24, regardless of whether they had developed SPT during follow-up. However, four patients (6.5%) experienced hypercalciuria at M24. Three (7.0%) did not develop SPT within 24 mo, whereas one (5.3%) developed SPT after M12 with simultaneous alterations of TmPi/eGFR and FEUA. This latter patient was an HBsAg-negative African female belonging to the naive group and

presented with hypertension and grade I obesity.

DISCUSSION

Most of the studies investigating the renal tolerance of NAs have focused on glomerular markers (serum creatinine and eGFR) instead of tubular markers^[16-18]. Although data on the tubular toxicity caused by TDF in HIV-positive patients are widely available^[3-5], analogous data in HBV-monoinfected populations are sparse^[3,4].

This paper reports on the first prospective, multicenter study that evaluated the prevalence and incidence of SPT for an extended duration (24 mo) using early markers in a population of HBV-monoinfected patients starting treatment with ETV or TDF.

A strong point of this study was the comparison of the treated groups with a control naïve group. The latter allowed for an evaluation of the role of HBV on tubular function in the absence of any treatments. Additionally, the effects of confounding factors on the interpretation of SPT prevalence or incidence were limited, as the patient population was homogeneous, relatively young (median age: 37.5 years), and had very few renal comorbidities.

Tubular markers

Optimal markers of proximal tubulopathy are not agreed upon in the literature. The most commonly used markers, whether early or late, are increased urinary α 1-microglobulin, urinary β 2-microglobulin, urinary retinol binding protein (RBP) or mixed proteinuria, fractional phosphate or uric acid excretion, non-diabetic glycosuria, hypophosphatemia, hypouricemia, hypokalemia, aminoaciduria, and renal tubular acidosis^[3,4,13]. None of these markers have demonstrated superiority in terms of sensitivity and specificity. The more sophisticated markers such as RBP or β 2-microglobulin are interesting, but they are expensive to analyze and not widely used. Kidney injury molecule-1 and neutrophil gelatinase-associated lipocalin are markers of acute tubular injury, which is passed the early prevention stage^[19]. The markers chosen in this study, TmPi/eGFR and FEUA, are easy to use, inexpensive, repeatable over time, and thus ideal for routine follow-up.

TDF and SPT

In this study, the prevalence of SPT at M24 was higher in patients treated with TDF compared to naïve patients (50% *vs* 30%). However, this difference was not statistically significant. Nevertheless, the HR for the cumulative incidence of SPT in the TDF group *vs* the naïve group was 2.28, with a trend towards significance and TDF-induced tubular toxicity.

In the literature, many study designs are heterogeneous. Two main studies used the same population as this one, except they were cross-sectional. In the first, Tien *et al*^[20] compared the prevalence of SPT (defined as decreased TmPi/eGFR) in 146 HBV-monoinfected patients (60 naïve, 44 treated with ETV, and 42 treated with TDF), of whom fewer than 2% had an eGFR < 60 mL/min/1.73 m²^[20]. SPT prevalence was 30%, 23%, and 43% in naïve, ETV, and TDF patients, respectively. Differences among these groups were not statistically different. Nonetheless, in a subgroup of patients treated with ETV and TDF for more than 18 mo, the prevalence of SPT was significantly higher in the TDF-treated group than in the ETV-treated group (48.5% *vs* 12.5%; *P* = 0.005). The second study was the multicenter "MENTE" study consisting of 280 HBV-monoinfected patients (122 naïve, 89 ETV, and 69 TDF), which reported an association between the TDF group and the presence of SPT^[21]. Here, the urinary RBP/creatininuria ratio was used as an SPT marker^[21].

In brief, no study has rigorously demonstrated a causal link between TDF and SPT or directly compared patients treated with TDF and ETV. Moreover, no other study has prospectively evaluated SPT incidence according to treatment type (*i.e.* naïve, ETV, and TDF).

ETV and SPT

The prevalence and cumulative incidence of SPT in the ETV-treated group compared to those in the naïve group were not significantly different. This negative result reinforces the good renal safety profile of ETV in humans and mouse models^[22-24]. Accordingly, Viganò *et al*^[25] argued that SPT in TDF-treated patients improved after switching to ETV^[25].

HBV and SPT

As previously highlighted *in vitro*, HBV-specific tubular toxicity may result from HBV replication and transcription activity in proximal tubular cells. In tubular cell cultures, the serum of infected patients had potential apoptotic effects^[20,21,26,27]. Detection of SPT in our HBV-monoinfected naïve patients supports this hypothesis *in vivo*.

A limitation of this study is the absence of a matched control population not infected with HBV. However, the tubular markers chosen here had been in use for many decades and validated in populations of healthy subjects. For instance, the adult 95% reference range for TmPi/eGFR is 0.80–1.35 mmol/L. Independent of age, normal values are above 0.8 mmol/L in healthy subjects^[28]. The normal value of FEUA is approximately 8%; values above 10% are considered to reflect a reabsorption defect^[29]. Consequently, using as a reference the normal values as defined in healthy populations, the observation that nearly 30% of the naïve HBV-monoinfected population met the definition of SPT implies a link between SPT and HBV infection.

Renal insufficiency, hypophosphatemia, and hypercalciuria

In this study, SPT screened at baseline or during follow-up in the low renal risk population did not impact eGFR, phosphatemia, and urinary calcium at M24 of NA-therapy. Data from the literature are highly variable due to the heterogeneity of the populations in terms of renal risk factors, age, pre-existing renal insufficiency, concomitant nephrotoxic drugs, and/or HIV co-infection^[6,16,18].

In contrast to the results reported here, Tien *et al.*^[20] found that the eGFR was lower in the ETV- and TDF-treated groups compared to the naïve group ($P = 0.002$) but not significantly different between the ETV- and TDF-treated groups^[20]. However, the decline in eGFR correlated with age and not with antiviral treatment. Further, their study design did not allow for any conclusions regarding an association between the observed reduction in eGFR and changes in tubular function (TmPi/eGFR).

In a prospective, single-center study, Viganò *et al.*^[30] evaluated the prevalence and incidence of hypophosphatemia and hyperphosphaturia within a median duration of 27 mo in 156 NA-naïve patients receiving TDF^[30]. During the follow-up, hyperphosphaturia appeared *de novo* in 26% of the patients, of whom only 4% developed mild hypophosphatemia (≤ 2.5 mg/dL)^[30]. None of the hypophosphatemia patients developed a severe, diffuse stage of tubulopathy that is characteristic of Fanconi syndrome.

The occurrence of hypophosphatemia following a correction of 25(OH)D3 deficiency reflects major perturbation in proximal tubular function in which compensatory mechanisms are exceeded. Cases of Fanconi syndrome are exceptional in HBV-monoinfected patients and have been described only with nucleotide analogues (*e.g.*, adefovir and exceptionally, TDF)^[31–33]. Regarding bone toxicity, the "MENTE" study failed to find a clear association between SPT and abnormal markers of bone remodeling^[21].

In summary, the few studies focusing on SPT following NA treatment are mainly cross-sectional and consequently do not allow for the long-term evaluation of their effects on renal and bone health. This prospective study suggests that, in low renal risk patients, SPT does not have clinical impacts on renal or bone health at M24.

25(OH)D3 insufficiency

In this study, the prevalence of 25(OH)D3 insufficiency and severe deficiency was 66.9% and 25.4% at baseline and 84.7% and 7.1% at M24, respectively, despite iterative supplementation. These results are very similar to those reported in the literature. In the Maggi study, which evaluated renal and bone toxicity in chronic hepatitis B patients treated with lamivudine and adefovir, the prevalence of vitamin D insufficiency and severe deficiency was 72.2% and 20.4%, respectively^[34]. Vitamin D insufficiency is common in chronic liver disease irrespective of etiology^[35]. Additionally, 25(OH)D3 has been suggested to increase tubular reabsorption of phosphate, in particular by directly modifying the lipid structure of the cell membrane of proximal tubular cells^[36]. In line with this hypothesis, the patients in this study had their 25(OH)D3 levels measured and supplemented to limit renal phosphate loss and misinterpretation of TmPi/eGFR levels.

Limitations of the study

The main limitation of this study was the small number of patients who completed SPT markers follow-up. Also, some missing SPT markers were substituted with values from the nearest available date (< 3 mo). Moreover, the choice of the primary endpoint (TmPi/eGFR < 0.8 mmol/L and/or FEUA $> 10\%$) favored sensitivity over specificity.

When the two markers, $\text{TmPi}/\text{eGFR} < 0.8 \text{ mmol/L/L}$ and $\text{FEUA} > 10\%$, were combined, the prevalence of SPT was 2.6%, 0%, and 9.5% in the naïve, ETV, and TDF groups, respectively, with no significant differences among the groups.

The absence of randomization could have generated a selection bias as baseline parameters potentially influencing renal function might not have been well-balanced in the treatment assignments, which were selected by the investigator. However, these potential confounders were limited in the overall population, which was characterized by a young age (median, 37.5 years) and very few renal comorbidities.

The dose-dependence of tubular toxicity caused by NAs could have been explored, especially with TDF. Unfortunately, TDF dosages were not readily available and were not recommended at the time of this study. Gene polymorphisms in the transporter proteins involved in TDF elimination (ABCC2 or ABCC4 genes) have been linked to renal tubular damage, implying that overexposure to TDF could cause kidney tubular cell damage. In HIV-infected patients, Rodríguez-Nóvoa *et al.*^[37] reported that median TDF plasma trough concentration was higher in patients with SPT as defined by the same early markers used in this study. However, even if this result implies cumulative toxicity, whether elevated TDF plasma concentration causes the development of SPT could not be determined due to their cross-sectional analysis.

The overexposure of tenofovir has so far been suggested but not proven in terms of the mechanism of toxicity. Indeed, the mechanism underlying tubular toxicity is probably not singular and could involve a cumulative dose effect; a recent paper proposed progressive mitochondrial dysfunction as a mechanism of TDF tubular toxicity^[38].

TAF: An opportunity

TAF represents real progress in terms of renal tolerance, but it is not available in all countries for HBV-monoinfected patients, including France. It is similar to TDF, in that it is a tenofovir prodrug but has better renal and bone tolerance profiles, most likely due to its higher intracellular and much lower plasma concentrations.

Two recent randomized, double-blind phase 3 studies evaluated the utility of renal biomarkers in HBV-monoinfected patients treated with TAF or TDF. At 48 wk, glomerular and tubular proteinuria (RBP/creatininuria and β 2-microglobulinuria/creatininuria) was lower in the TAF group (percent change from baseline: 0.3% *vs* 25.1%; $P < 0.001$ and -3.5% *vs* 37.9%; $P < 0.001$, respectively)^[39]. The reversibility of SPT after TDF/TAF switching, as assayed with early tubular markers, remains unknown.

CONCLUSION

This prospective study did not find significant differences in SPT prevalence and incidence at M24 between low renal risk HBV-monoinfected patients treated with ETV or TDF and treatment-naïve patients. Nonetheless, the prevalence and incidence of SPT tended to be higher in the TDF group, which had a low survival time (5.9 mo) without SPT. The data presented here confirm that after 24 mo of NA therapy, patients exhibited a good renal safety profile irrespective of whether SPT was detected at baseline or during follow-up. However, these data should be treated with caution, as additional prospective studies involving large cohorts over several years are still warranted.

Current recommendations include monitoring phosphatemia, serum creatinine, and eGFR to screen renal toxicity, but these are late markers of tubular pathology. In clinical practice, proximal tubular damage would ideally be screened at an early stage using simple and inexpensive tools, especially in populations with renal risk (*e.g.*, patients with hypertension or diabetes or who underwent kidney transplantation). Indeed, the detection here of SPT markers in some HBV-monoinfected patients prior to any antiviral treatment confirms the hypothesis that HBV exerts specific toxicity on proximal tubular cells.

It has been suggested that at 1 year after stopping treatment, SPT could be reversible in approximately 80% of cases^[13]. Finally, TAF is a promising agent and should be used preferentially, at least in patients at risk of renal toxicity.

ARTICLE HIGHLIGHTS

Research background

Proximal tubular renal toxicity is a main concern in prolonged nucleot(s)ide analogue therapy in hepatitis B virus (HBV)-infected patients. Currently available data for HBV-monoinfected patients are either retrospective or cross-sectional. The recommended screening tools for renal toxicity, estimated glomerular filtration rate (eGFR) and phosphatemia, are late markers for subclinical proximal tubular (SPT) damage. Thus, early SPT detection with tools that are simple, inexpensive, and repeatable over time are needed. Moreover, preclinical studies have reported that HBV exhibits potential toxicity in proximal tubular cells before any antiviral treatment.

Research motivation

Early detection of tubulopathy could allow clinicians to choose less toxic therapeutic alternatives such as tenofovir alafenamide (TAF), particularly in patients with renal comorbidities. TAF is not available in all countries for HBV-monoinfected patients, but its use may be transitionally authorized. Clinical evidence in favor of HBV-induced renal toxicity may assist in improving interpretations of SPT markers over time, as well as explain why these markers improve under antiviral use.

Research objectives

The main objective was to determine the prevalence of SPT at month 24 (M24) in three populations: Treatment-naïve patients and patients starting entecavir (ETV) or tenofovir disoproxil (TDF) at M0. The secondary objectives were to evaluate the cumulative incidence of SPT over 24 mo in the three groups as well as the prevalence of SPT in the naïve population at baseline.

Research methods

This first real-life, prospective, multicenter, French study of patients with low renal risk aimed to determine SPT in three groups of HBV-monoinfected patients: Treatment-naïve and those starting ETV or TDF. Markers for SPT, the eGFR and phosphatemia, were assessed quarterly. SPT was defined using early and low-cost simple markers: TmPi/eGFR below 0.8 mmol/L and/or fractional excretion rate of uric acid above 10%. Confounding factors potentially impacting kidney function across the groups were assayed.

Research results

At M24, the prevalence of SPT was 30.7% in the naïve group, 21.1% in the ETV-treated group, and 50.0% in the TDF-treated group. However, differences in SPT prevalence between the naïve group and each treatment group (ETV and TDF groups) were not significantly different. In the multivariate analysis, no post-adjustment variables were identified. The incidence of SPT over 24 mo (25.5%, 13.3%, and 52.9% in the naïve, ETV-treated, and TDF-treated groups, respectively) tended to be higher in the TDF group compared to the naïve group (hazard ratio: 2.283; $P = 0.05$). The median survival time without SPT was 5.9 mo in the TDF group. In patients without SPT at baseline, no renal insufficiency or hypophosphatemia was observed at M24.

Research conclusions

This prospective, multicenter study is the first to evaluate the prevalence and incidence of SPT in low renal risk HBV-monoinfected patients using early markers. Patients were divided into treatment-naïve, ETV-treated, or TDF-treated groups. The prevalence of SPT at M24 was high (21%–50%), but it had no clinical impacts in terms of renal insufficiency or hypophosphatemia. The incidence of SPT tended to be higher in the TDF group. Moreover, the detection of SPT in HBV-monoinfected naïve patients supports the hypothesis of HBV-specific tubular toxicity.

Research perspectives

To better evaluate the clinical impacts of nucleot(s)ide analogue-induced SPT on renal function, future prospective studies tracking both simple and sophisticated SPT markers over a longer period of time are warranted. Furthermore and paradoxically, these early markers may be also used to evaluate treatment reversibility of HBV-induced SPT.

ACKNOWLEDGEMENTS

We would like to thank Céline Rigaud for her assistance with manuscript revision and Sarah Demay for proofreading the manuscript.

REFERENCES

- Ott JJ, Stevens GA, Groeger J, Wiersma ST. Global epidemiology of hepatitis B virus infection: new estimates of age-specific HBsAg seroprevalence and endemicity. *Vaccine* 2012; **30**: 2212-2219 [PMID: 22273662 DOI: 10.1016/j.vaccine.2011.12.116]
- WHO. Hépatite B [Internet]. [cited 2019 May 1]; Available from: <https://www.who.int/fr/news-room/fact-sheets/detail/hepatitis-b>
- Labarga P, Barreiro P, Martin-Carbonero L, Rodriguez-Novoa S, Solera C, Medrano J, Rivas P, Albalater M, Blanco F, Moreno V, Vispo E, Soriano V. Kidney tubular abnormalities in the absence of impaired glomerular function in HIV patients treated with tenofovir. *AIDS* 2009; **23**: 689-696 [PMID: 19262355 DOI: 10.1097/QAD.0b013e3283262a64]
- Ezinga M, Wetzels JF, Bosch ME, van der Ven AJ, Burger DM. Long-term treatment with tenofovir: prevalence of kidney tubular dysfunction and its association with tenofovir plasma concentration. *Antivir Ther* 2014; **19**: 765-771 [PMID: 24584104 DOI: 10.3851/IMP2761]
- Casado JL, Del Rey JM, Bañón S, Santiuste C, Rodríguez M, Moreno A, Perez-Eliás MJ, Liaño F, Moreno S. Changes in Kidney Function and in the Rate of Tubular Dysfunction After Tenofovir Withdrawal or Continuation in HIV-Infected Patients. *J Acquir Immune Defic Syndr* 2016; **72**: 416-422 [PMID: 26962850 DOI: 10.1097/QAI.0000000000000986]
- Lampertico P, Chan HL, Janssen HL, Strasser SI, Schindler R, Berg T. Review article: long-term safety of nucleoside and nucleotide analogues in HBV-monoinfected patients. *Aliment Pharmacol Ther* 2016; **44**: 16-34 [PMID: 27198929 DOI: 10.1111/apt.13659]
- Manns MP, Akarca US, Chang TT, Sievert W, Yoon SK, Tsai N, Min A, Pangerl A, Beebe S, Yu M, Wongcharatrawee S. Long-term safety and tolerability of entecavir in patients with chronic hepatitis B in the rollover study ETV-901. *Expert Opin Drug Saf* 2012; **11**: 361-368 [PMID: 22233350 DOI: 10.1517/14740338.2012.653340]
- Marcellin P, Heathcote EJ, Buti M, Gane E, de Man RA, Krastev Z, Germanidis G, Lee SS, Flisiak R, Kaita K, Manns M, Kotzev I, Tchernev K, Buggisch P, Weilert F, Kurdas OO, Shiffman ML, Trinh H, Washington MK, Sorbel J, Anderson J, Snow-Lampart A, Mondou E, Quinn J, Rousseau F. Tenofovir disoproxil fumarate versus adefovir dipivoxil for chronic hepatitis B. *N Engl J Med* 2008; **359**: 2442-2455 [PMID: 19052126 DOI: 10.1056/NEJMoa0802878]
- Fontana RJ. Side effects of long-term oral antiviral therapy for hepatitis B. *Hepatology* 2009; **49**: S185-S195 [PMID: 19399802 DOI: 10.1002/hep.22885]
- Isnard-Bagnis C, Aloy B, Deray G, Tourret J. [Tenofovir nephrotoxicity]. *Nephrol Ther* 2016; **12**: 179-189 [PMID: 27017518 DOI: 10.1016/j.nephro.2016.01.002]
- Rodriguez-Nóvoa S, Alvarez E, Labarga P, Soriano V. Renal toxicity associated with tenofovir use. *Expert Opin Drug Saf* 2010; **9**: 545-559 [PMID: 20384533 DOI: 10.1517/14740331003627458]
- Libório AB, Andrade L, Pereira LV, Sanches TR, Shimizu MH, Seguro AC. Rosiglitazone reverses tenofovir-induced nephrotoxicity. *Kidney Int* 2008; **74**: 910-918 [PMID: 18563054 DOI: 10.1038/ki.2008.252]
- Sobhonslidsuk A, Numthavaj P, Wanichanuwat J, Sophonsritsuk A, Petraksa S, Pugasub A, Jittorntam P, Kongsomgan A, Roytrakul S, Phakdeekitcharoen B. Reversal of Proximal Renal Tubular Dysfunction after Nucleotide Analogue Withdrawal in Chronic Hepatitis B. *Biomed Res Int* 2017; **2017**: 4327385 [PMID: 29214169 DOI: 10.1155/2017/4327385]
- Norden AG, Lapsley M, Unwin RJ. Urine retinol-binding protein 4: a functional biomarker of the proximal renal tubule. *Adv Clin Chem* 2014; **63**: 85-122 [PMID: 24783352 DOI: 10.1016/b978-0-12-800094-6.00003-0]
- European Association for the Study of the Liver. EASL clinical practice guidelines: Management of chronic hepatitis B virus infection. *J Hepatol* 2012; **57**: 167-185 [PMID: 22436845 DOI: 10.1016/j.jhep.2012.02.010]
- Yang YM, Choi EJ. Renal safety of tenofovir and/or entecavir in patients with chronic HBV monoinfection. *Ther Clin Risk Manag* 2017; **13**: 1273-1285 [PMID: 29033575 DOI: 10.2147/TCRM.S143286]
- Chan HL, Shaikh J, Gupta S, Hamed K. Renal Function in Nucleos(t)ide Analog-Treated Patients With Chronic Hepatitis B: A Systematic Literature Review and Network Meta-Analysis. *Adv Ther* 2016; **33**: 862-875 [PMID: 27146675 DOI: 10.1007/s12325-016-0337-2]
- Buti M, Riveiro-Barciela M, Esteban R. Long-term safety and efficacy of nucleos(t)ide analogue therapy in hepatitis B. *Liver Int* 2018; **38** Suppl 1: 84-89 [PMID: 29427500 DOI: 10.1111/liv.13641]
- Del Palacio M, Romero S, Casado JL. Proximal tubular renal dysfunction or damage in HIV-infected patients. *AIDS Rev* 2012; **14**: 179-187 [PMID: 22833061]
- Tien C, Xu JJ, Chan LS, Chang M, Lim C, Lee S, Huh B, Shinada S, Bae HS, Fong TL. Long-term treatment with tenofovir in Asian-American chronic hepatitis B patients is associated with abnormal renal phosphate handling. *Dig Dis Sci* 2015; **60**: 566-572 [PMID: 25239496 DOI: 10.1007/s12325-015-0337-2]

- 10.1007/s10620-014-3363-4]
- 21 **Rodríguez-Nóvoa S**, García-Samaniego J, Prieto M, Calleja JL, Pascasio JM, Delgado Blanco M, Crespo J, Buti M, Bonet Vidal ML, Arenas Ruiz Tapiador J, Fernández-Rodríguez C, Solá R, Fraga E, González Diéguez L, Núñez O, Praga M, Del Pino-Montes J, Romero-Gómez M, Morillas R, Diago M, Castro Á; MENTE Study Group. Altered Underlying Renal Tubular Function in Patients With Chronic Hepatitis B Receiving Nucleos(t)ide Analogs in a Real-World Setting: The MENTE Study. *J Clin Gastroenterol* 2016; **50**: 779-789 [PMID: [27332746](#) DOI: [10.1097/MCG.0000000000000569](#)]
- 22 **Uteng M**, Mahl A, Beckmann N, Piaia A, Ledieu D, Dubost V, Tritto E, Wolf A, Moulin P, Li L, Chibout SD, Pognan F. Editor's Highlight: Comparative Renal Safety Assessment of the Hepatitis B Drugs, Adefovir, Tenofovir, Telbivudine and Entecavir in Rats. *Toxicol Sci* 2017; **155**: 283-297 [PMID: [27742868](#) DOI: [10.1093/toxsci/kfw208](#)]
- 23 **Tsai MC**, Chen CH, Tseng PL, Hung CH, Chiu KW, Wang JH, Lu SN, Lee CM, Chang KC, Yen YH, Lin MT, Chou YP, Hu TH. Comparison of renal safety and efficacy of telbivudine, entecavir and tenofovir treatment in chronic hepatitis B patients: real world experience. *Clin Microbiol Infect* 2016; **22**: 95.e1-95.e7 [PMID: [26055419](#) DOI: [10.1016/j.cmi.2015.05.035](#)]
- 24 **Mazzucco CE**, Hamatake RK, Colonno RJ, Tenney DJ. Entecavir for treatment of hepatitis B virus displays no in vitro mitochondrial toxicity or DNA polymerase gamma inhibition. *Antimicrob Agents Chemother* 2008; **52**: 598-605 [PMID: [18056280](#) DOI: [10.1128/AAC.01122-07](#)]
- 25 **Viganò M**, Loglio A, Labanca S, Zaltron S, Castelli F, Andreone P, Messina V, Ganga R, Coppola N, Marrone A, Russello M, Marzano A, Tucci A, Taliani G, Fasano M, Fagioli S, Villa E, Bronte F, Santantonio T, Brancaccio G, Occhipinti V, Facchetti F, Grossi G, Rumi M, Lampertico P. Effectiveness and safety of switching to entecavir hepatitis B patients developing kidney dysfunction during tenofovir. *Liver Int* 2019; **39**: 484-493 [PMID: [30525275](#) DOI: [10.1111/liv.14017](#)]
- 26 **Deng CL**, Song XW, Liang HJ, Feng C, Sheng YJ, Wang MY. Chronic hepatitis B serum promotes apoptotic damage in human renal tubular cells. *World J Gastroenterol* 2006; **12**: 1752-1756 [PMID: [16586546](#) DOI: [10.3748/wjg.v12.i11.1752](#)]
- 27 **Wang X**, Wang L, Zhu N, Zhou Y, Gu LJ, Yuan WJ. Hepatitis B virus X protein modulates renal tubular epithelial cell-induced T-cell and macrophage responses. *Immunol Cell Biol* 2016; **94**: 266-273 [PMID: [26365016](#) DOI: [10.1038/icb.2015.85](#)]
- 28 **Payne RB**. Renal tubular reabsorption of phosphate (TmP/GFR): indications and interpretation. *Ann Clin Biochem* 1998; **35**: 201-206 [PMID: [9547891](#) DOI: [10.1177/000456329803500203](#)]
- 29 **Snaith ML**, Scott JT. Uric acid clearance in patients with gout and normal subjects. *Ann Rheum Dis* 1971; **30**: 285-289 [PMID: [5090245](#) DOI: [10.1136/ard.30.3.285](#)]
- 30 **Viganò M**, Lampertico P, Mangia G, Soffredini R, Facchetti F, Invernizzi F, Colombo M. OC-30 Incidence and clinical consequences of reduced tubular phosphate re-absorption in naïve CHB patients treated with tenofovir: a two-year field study. *Dig Liver Dis* 2013; **45**: S10-S11 [DOI: [10.1016/S1590-8658\(13\)60031-6](#)]
- 31 **Jung YK**, Yeon JE, Choi JH, Kim CH, Jung ES, Kim JH, Park JJ, Kim JS, Bak YT, Byun KS. Fanconi's Syndrome Associated with Prolonged Adefovir Dipivoxil Therapy in a Hepatitis B Virus Patient. *Gut Liver* 2010; **4**: 389-393 [PMID: [20981219](#) DOI: [10.5009/gnl.2010.4.3.389](#)]
- 32 **Gracey DM**, Snelling P, McKenzie P, Strasser SI. Tenofovir-associated Fanconi syndrome in patients with chronic hepatitis B mono-infection. *Antivir Ther* 2013; **18**: 945-948 [PMID: [23839869](#) DOI: [10.3851/IMP2649](#)]
- 33 **Conti F**, Vitale G, Cursaro C, Bernardi M, Andreone P. Tenofovir-induced Fanconi syndrome in a patient with chronic hepatitis B mono-infection. *Ann Hepatol* 2016; **15**: 273-276 [PMID: [26845606](#) DOI: [10.5604/16652681.1193725](#)]
- 34 **Maggi P**, Montinaro V, Leone A, Fasano M, Volpe A, Bellacosa C, Grattagliano V, Coladonato L, Lapadula G, Santantonio T, Angarano G. Bone and kidney toxicity induced by nucleotide analogues in patients affected by HBV-related chronic hepatitis: a longitudinal study. *J Antimicrob Chemother* 2015; **70**: 1150-1154 [PMID: [25525197](#) DOI: [10.1093/jac/dku502](#)]
- 35 **Hoan NX**, Tong HV, Song LH, Meyer CG, Velavan TP. Vitamin D deficiency and hepatitis viruses-associated liver diseases: A literature review. *World J Gastroenterol* 2018; **24**: 445-460 [PMID: [29398866](#) DOI: [10.3748/wjg.v24.i4.445](#)]
- 36 **Georgaki H**, Puschett JB. Influence of vitamin D status and chronic administration on the renal tubular effects of 1,25-dihydroxy vitamin D3. *Proc Soc Exp Biol Med* 1983; **174**: 86-92 [PMID: [6688877](#) DOI: [10.3181/00379727-174-41708](#)]
- 37 **Rodríguez-Nóvoa S**, Labarga P, D'Avolio A, Barreiro P, Albalade M, Vispo E, Solera C, Siccardi M, Bonora S, Di Perri G, Soriano V. Impairment in kidney tubular function in patients receiving tenofovir is associated with higher tenofovir plasma concentrations. *AIDS* 2010; **24**: 1064-1066 [PMID: [20299966](#) DOI: [10.1097/QAD.0b013e32833202e2](#)]
- 38 **Perazella MA**. Tenofovir-induced kidney disease: an acquired renal tubular mitochondriopathy. *Kidney Int* 2010; **78**: 1060-1063 [PMID: [21076445](#) DOI: [10.1038/ki.2010.344](#)]
- 39 **Tam E**, Khan M, ide T, Strasser S, Yoon K, Paik S, Flaherty J, Kim K. A171 Minimal changes in urine markers of tubular dysfunction in CHB patients receiving TAF compared with TDF. *J Can Assoc Gastroenterol* 2018; **1**: 297-298 [DOI: [10.1093/jcag/gwy008.172](#)]



Published by **Baishideng Publishing Group Inc**
7041 Koll Center Parkway, Suite 160, Pleasanton, CA 94566, USA

Telephone: +1-925-3991568

E-mail: bpgoffice@wjgnet.com

Help Desk: <https://www.f6publishing.com/helpdesk>

<https://www.wjgnet.com>

