



HAL
open science

Invasive pulmonary aspergillosis among intubated patients with SARS-CoV-2 or influenza pneumonia: a European multicenter comparative cohort study

Anahita Rouzé, Elise Lemaitre, Ignacio Martin-Loeches, Pedro Pova, Emili Diaz, Rémy Nyga, Antoni Torres, Matthieu Metzeldard, Damien Du Cheyron, Fabien Lambiotte, et al.

► To cite this version:

Anahita Rouzé, Elise Lemaitre, Ignacio Martin-Loeches, Pedro Pova, Emili Diaz, et al.. Invasive pulmonary aspergillosis among intubated patients with SARS-CoV-2 or influenza pneumonia: a European multicenter comparative cohort study. *Critical Care*, 2022, 26 (1), pp.11. 10.1186/s13054-021-03874-1 . hal-03820642

HAL Id: hal-03820642

<https://u-picardie.hal.science/hal-03820642>

Submitted on 18 Nov 2022

HAL is a multi-disciplinary open access archive for the deposit and dissemination of scientific research documents, whether they are published or not. The documents may come from teaching and research institutions in France or abroad, or from public or private research centers.


L'archive ouverte pluridisciplinaire **HAL**, est destinée au dépôt et à la diffusion de documents scientifiques de niveau recherche, publiés ou non, émanant des établissements d'enseignement et de recherche français ou étrangers, des laboratoires publics ou privés.

RESEARCH

Open Access



Invasive pulmonary aspergillosis among intubated patients with SARS-CoV-2 or influenza pneumonia: a European multicenter comparative cohort study

Anahita Rouzé^{1,2}, Elise Lemaître¹, Ignacio Martin-Loeches^{3,4,5}, Pedro Povoá^{6,7,8}, Emili Diaz⁹, Rémy Nyga¹⁰, Antoni Torres¹¹, Matthieu Metzeldard¹⁰, Damien Du Cheyron¹², Fabien Lambiotte¹³, Fabienne Tamion¹⁴, Marie Labruyere¹⁵, Claire Boulle Geronimi¹⁶, Charles-Edouard Luyt¹⁷, Martine Nyunga¹⁸, Olivier Pouly¹⁹, Arnaud W. Thille²⁰, Bruno Megarbane²¹, Anastasia Saade²², Eleni Magira²³, Jean-François Llitjos²⁴, Iliana Ioannidou²⁵, Alexandre Pierre²⁶, Jean Reignier²⁷, Denis Garot²⁸, Louis Kreitmann²⁹, Jean-Luc Baudel³⁰, Guillaume Voiriot³¹, Gaëtan Plantefeve³², Elise Morawiec^{33,34}, Pierre Asfar³⁵, Alexandre Boyer³⁶, Armand Mekontso-Dessap³⁷, Demosthenes Makris³⁸, Christophe Vinsonneau³⁹, Pierre-Edouard Floch⁴⁰, Clémence Marois^{41,42}, Adrian Ceccato⁴³, Antonio Artigas⁴⁴, Alexandre Gaudet^{1,45}, David Nora⁶, Marjorie Cornu^{2,46}, Alain Duhamel^{47,48}, Julien Labreuche^{47,48}, Saad Nseir^{1,2*}  and the coVAPid study group

Abstract

Background: Recent multicenter studies identified COVID-19 as a risk factor for invasive pulmonary aspergillosis (IPA). However, no large multicenter study has compared the incidence of IPA between COVID-19 and influenza patients.

Objectives: To determine the incidence of putative IPA in critically ill SARS-CoV-2 patients, compared with influenza patients.

Methods: This study was a planned ancillary analysis of the coVAPid multicenter retrospective European cohort. Consecutive adult patients requiring invasive mechanical ventilation for > 48 h for SARS-CoV-2 pneumonia or influenza pneumonia were included. The 28-day cumulative incidence of putative IPA, based on Blot definition, was the primary outcome. IPA incidence was estimated using the Kalbfleisch and Prentice method, considering extubation (dead or alive) within 28 days as competing event.

Results: A total of 1047 patients were included (566 in the SARS-CoV-2 group and 481 in the influenza group). The incidence of putative IPA was lower in SARS-CoV-2 pneumonia group (14, 2.5%) than in influenza pneumonia group (29, 6%), adjusted cause-specific hazard ratio (cHR) 3.29 (95% CI 1.53–7.02, $p = 0.0006$). When putative IPA and Aspergillus respiratory tract colonization were combined, the incidence was also significantly lower in the SARS-CoV-2 group, as compared to influenza group (4.1% vs. 10.2%), adjusted cHR 3.21 (95% CI 1.88–5.46, $p < 0.0001$). In the whole

*Correspondence: s-nseir@chru-lille.fr

¹ CHU de Lille, Médecine Intensive-Réanimation, 59000 Lille, France
Full list of author information is available at the end of the article



© The Author(s) 2022. **Open Access** This article is licensed under a Creative Commons Attribution 4.0 International License, which permits use, sharing, adaptation, distribution and reproduction in any medium or format, as long as you give appropriate credit to the original author(s) and the source, provide a link to the Creative Commons licence, and indicate if changes were made. The images or other third party material in this article are included in the article's Creative Commons licence, unless indicated otherwise in a credit line to the material. If material is not included in the article's Creative Commons licence and your intended use is not permitted by statutory regulation or exceeds the permitted use, you will need to obtain permission directly from the copyright holder. To view a copy of this licence, visit <http://creativecommons.org/licenses/by/4.0/>. The Creative Commons Public Domain Dedication waiver (<http://creativecommons.org/publicdomain/zero/1.0/>) applies to the data made available in this article, unless otherwise stated in a credit line to the data.

study population, putative IPA was associated with significant increase in 28-day mortality rate, and length of ICU stay, compared with colonized patients, or those with no IPA or *Aspergillus* colonization.

Conclusions: Overall, the incidence of putative IPA was low. Its incidence was significantly lower in patients with SARS-CoV-2 pneumonia than in those with influenza pneumonia.

Clinical trial registration The study was registered at ClinicalTrials.gov, number [NCT04359693](https://clinicaltrials.gov/ct2/show/study/NCT04359693).

Keywords: Invasive pulmonary aspergillosis, Severe influenza, COVID-19, Mechanical ventilation, Intensive care unit

Background

Invasive pulmonary aspergillosis (IPA) was reported to be common in critically ill patients with chronic obstructive pulmonary disease (COPD) [1], acute respiratory distress syndrome (ARDS) [2], cirrhosis [3], acute hepatitis [4], or immunosuppression [5]. Previous studies also highlighted a relationship between IPA and outcomes, including mortality, duration of mechanical ventilation, and ICU length of stay [6]. Recently, critically ill patients receiving invasive mechanical ventilation for severe influenza were identified as a high-risk population for IPA [7]. Influenza-associated IPA (IAPA) was also reported to be associated with increased risk for mortality in this population.

Case series, rapidly followed by single-center and large multicenter studies, highlighted a link between COVID-19 pneumonia and IPA. The incidence of IPA ranges from 4.8 to 23% of patients with SARS-CoV-2 pneumonia receiving invasive mechanical ventilation [8–17]. Some of these studies also showed that COVID-19-associated IPA (CAPA) was associated with increased mortality and longer duration of mechanical ventilation, and ICU stay [16]. To the best of our knowledge, only one retrospective study compared the incidence of IPA between COVID-19 ARDS patients and other-viruses-related ARDS [18]. This study suggested that COVID-19 was associated with reduced incidence of IPA as compared to other ARDS patients. However, the number of included patients was limited ($n = 172$) and the study was performed in a single center.

Therefore, we conducted this planned ancillary study of the coVAPid European multicenter cohort to determine the incidence of putative IPA in SARS-CoV-2 pneumonia, compared to influenza pneumonia, in intubated critically ill patients. Secondary objectives were to determine the impact of putative IPA on morbidity and mortality, and the incidence of probable IPA, based on Verweij definition [19].

Methods

Study design and population

This study was a planned ancillary analysis of the coVAPid multicenter retrospective observational cohort, conducted in 36 ICUs in Europe. The methods used in

the coVAPid study are described elsewhere [20]. Briefly, consecutive adult patients with SARS-CoV-2 pneumonia, influenza pneumonia, or no viral infection at ICU admission, who required invasive mechanical ventilation for more than 48 h, were included. Only patients with SARS-CoV-2 pneumonia, or influenza pneumonia, were eligible for the current ancillary study. Patients with missing data regarding the primary outcome were excluded from the current analysis.

The Ethics Committee and Institutional Review Board of the Lille University Hospital approved the study protocol (Comité de Protection des Personnes Ouest VI; approved by April 14, 2020; registration number RIPH:20.04.09.60039) as minimal-risk research using data collected for routine clinical practice and waived the requirement for informed consent. Patients (or their proxies) received written information about the study and could refuse to participate. The study was registered at ClinicalTrials.gov, number NCT04359693.

Definitions

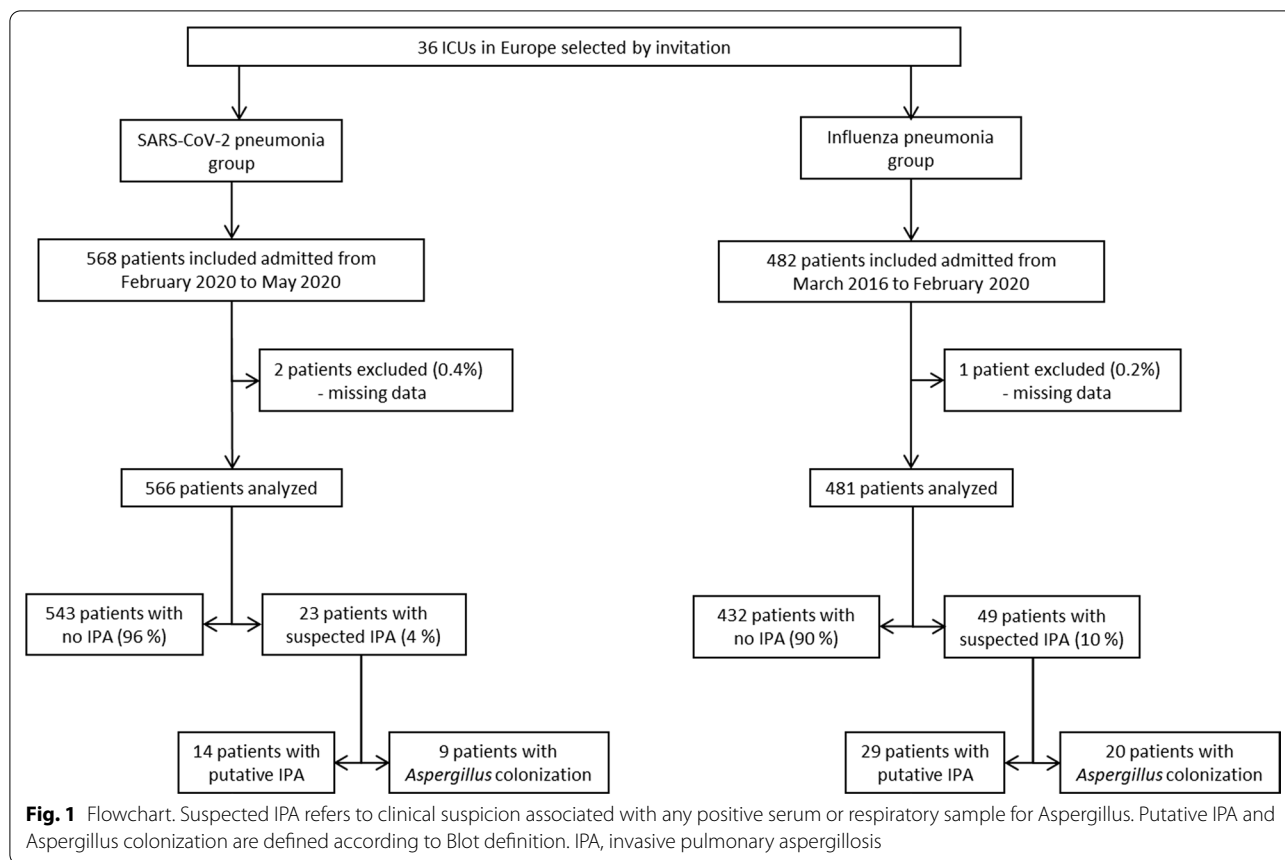
Blot criteria were used for IPA diagnosis, as primary outcome [21]. When at least one criterion necessary for the diagnosis of putative IPA according to Blot definition was not met, the case was classified as *Aspergillus* colonization. Verweij criteria were used for probable IPA diagnosis, as a secondary outcome (Additional file 1: Table E1) [19]. Suspected IPA refers to clinical suspicion associated with any positive serum or respiratory sample for *Aspergillus*.

Outcomes

The primary outcome of our study was the incidence of putative IPA, according to Blot definition. The secondary outcomes included the incidence of probable IPA, according to Verweij definition; and outcomes of putative IPA, including mechanical ventilation duration, ICU length of stay, and 28-day mortality.

Statistical analysis

Quantitative variables were expressed as median (interquartile range) and categorical variables were expressed as numbers (percentage). Patient characteristics at ICU admission and during ICU stay were described, in each



group, according to aspergillosis status (none, *Aspergillus* colonization, and putative IPA), without formal statistical comparisons. The 28-day cumulative incidence of putative or probable IPA, or combination of colonization and putative IPA were estimated using Kalbfleisch and Prentice method, considering extubation (dead or alive) within 28 days as competing event. For the incidence of putative IPA according to Blot definition, occurrence of *Aspergillus* colonization was treated as a competing event, in addition to extubation [22].

Regarding the causal relationship of interest, we assessed the association of study groups with IPA (according to both definitions, as well as combining together colonization and putative IPA) using cause-specific Cox’s proportional hazard models, with sandwich covariance estimation to account for center clustering effect. We considered previously cited competing events, before and after adjustment for pre-specified confounders (simplified acute physiology score (SAPS) II, COPD, immunosuppression, recent antibiotic treatment

before ICU admission, ARDS on admission, corticosteroid treatment during ICU stay) [23]. Cause-specific hazard ratios (cHR) and their 95% confidence intervals (CIs) associated with SARS-CoV-2 pneumonia, against influenza pneumonia, were derived from Cox’s models as effect sizes.

We assessed the association of putative IPA with patient’s outcomes censored at day 28 (overall survival, mechanical ventilation duration, length of ICU stay) using a Cox’s regression model (with sandwich covariance estimation to account for center clustering effect) performed on the whole study population, combining the two groups), with cause-specific hazard for mechanical ventilation duration (considering extubation alive as event of interest and death under mechanical ventilation as competing event), and for length of ICU stay (considering ICU discharge alive as event of interest, and death during ICU as competing event), including study group, IPA, and interaction between IPA status and study group. IPA was treated as a time-dependent covariate, as

Table 1 Patient characteristics at ICU admission according to study group and aspergillosis status based on Blot definition

	SARS-CoV-2 pneumonia n = 566			Influenza pneumonia n = 481		
	No putative IPA, or colonization (n = 543)	Aspergillus colonization (n = 9)	Putative IPA (n = 14)	No putative IPA, or colonization (n = 432)	Aspergillus colonization (n = 20)	Putative IPA (n = 29)
Age, years	64 (55 to 71)	63 (62 to 68)	67 (52 to 75)	62 (53 to 71)	61 (51 to 71)	58 (52 to 64)
Men	387/543 (71.3)	8/9 (88.9)	11/14 (78.6)	271/432 (62.7)	13/20 (65.0)	14/29 (48.3)
Body mass index [†] , kg/m ²	28.7 (25.7 to 33.6)	31.2 (26.5 to 32.5)	29.9 (28.6 to 31.8)	27.7 (23.3 to 32.7)	29.0 (25.7 to 30.4)	25.2 (21.5 to 28.5)
<i>Severity scores</i>						
SAPS II [‡]	41 (32 to 56)	44 (37 to 48)	36 (31 to 48)	50 (39 to 64)	57 (42 to 65)	47 (36 to 63)
SOFA score [§]	6 (3 to 8)	6 (5 to 9)	5 (4 to 7)	8 (6 to 11)	7 (6 to 10)	7 (4 to 12)
<i>Comorbidities scores</i>						
<i>McCabe classification</i>						
Non-fatal	454/518 (87.6)	8/9 (88.9)	11/14 (78.6)	288/410 (70.2)	17/18 (94.4)	19/27 (70.4)
Fatal < 5 years	58/518 (11.2)	1/9 (11.1)	3/14 (21.4)	107/410 (26.1)	1/18 (5.6)	6/27 (22.2)
Fatal < 1 year	6/518 (1.2)	0/9 (0.0)	0/14 (0.0)	15/410 (3.7)	0/18 (0.0)	2/27 (7.4)
Charlson Comorbidity Index	3 (1 to 4)	4 (2 to 5)	2.5 (2 to 5)	3 (2 to 5)	4 (2 to 6)	3 (1 to 4)
<i>Chronic diseases</i>						
Diabetes mellitus	159/540 (29.4)	5/9 (55.6)	4/14 (28.6)	94/425 (22.1)	4/20 (20.0)	6/28 (21.4)
Chronic kidney disease	29/535 (5.4)	3/8 (37.5)	1/14 (7.1)	35/427 (8.2)	1/20 (5.0)	3/27 (11.1)
Heart disease	98/535 (18.3)	2/9 (22.2)	2/14 (14.3)	108/426 (25.4)	3/20 (15.0)	6/29 (20.7)
Chronic heart failure	19/534 (3.6)	2/8 (25.0)	0/14 (0.0)	35/426 (8.2)	1/20 (5.0)	1/28 (3.6)
COPD	35/536 (6.5)	0/8 (0.0)	2/14 (14.3)	119/426 (27.9)	7/20 (35.0)	3/28 (10.7)
Chronic respiratory failure	19/534 (3.6)	0/8 (0.0)	1/14 (7.1)	62/426 (14.6)	2/20 (10.0)	2/28 (7.1)
Cirrhosis	8/535 (1.5)	0/8 (0.0)	0/14 (0.0)	14/426 (3.3)	1/20 (5.0)	1/28 (3.6)
Immunosuppression	46/535 (8.6)	2/8 (25.0)	2/14 (14.3)	93/429 (21.7)	2/20 (10.0)	11/29 (37.9)
Hematological malignancy	5/534 (0.9)	0/8 (0.0)	1/14 (7.1)	24/428 (5.6)	1/20 (5.0)	5/29 (17.2)
Solid cancer	25/534 (4.7)	0/8 (0.0)	0/14 (0.0)	37/428 (8.6)	1/20 (5.0)	1/29 (3.4)
Organ transplant	5/534 (0.9)	1/8 (12.5)	0/14 (0.0)	7/428 (1.6)	0/20 (0.0)	4/29 (13.8)
HIV	3/534 (0.6)	0/8 (0.0)	0/14 (0.0)	5/428 (1.2)	0/20 (0.0)	0/29 (0.0)
Immunosuppressive drugs	21/534 (3.9)	2/8 (25.0)	2/14 (14.3)	44/428 (10.3)	0/20 (0.0)	7/29 (24.1)
Active smoking	29/536 (5.4)	0/8 (0.0)	0/14 (0.0)	130/426 (30.5)	8/20 (40.0)	11/29 (37.9)
Alcohol abuse	33/534 (6.2)	1/8 (12.5)	0/14 (0.0)	75/425 (17.6)	3/20 (15.0)	7/29 (24.1)
<i>Location before ICU admission</i>						
Home	264/543 (48.6)	3/9 (33.3)	3/14 (21.4)	251/431 (58.2)	8/20 (40.0)	15/29 (51.7)
Hospital ward	199/543 (36.6)	5/9 (55.6)	11/14 (78.6)	138/431 (32.0)	7/20 (35.0)	12/29 (41.4)
Another ICU	80/543 (14.7)	1/9 (11.1)	0/14 (0.0)	42/431 (9.7)	5/20 (25.0)	2/29 (6.9)
Recent hospitalization (< 3 months)	39/541 (7.2)	2/9 (22.2)	3/14 (21.4)	61/429 (14.2)	6/20 (30.0)	5/29 (17.2)
Recent antibiotics (< 3 months)	70/542 (12.9)	1/9 (11.1)	3/14 (21.4)	79/427 (18.5)	8/20 (40.0)	7/29 (24.1)
Hospital to ICU admission, days [¶]	1 (0 to 2)	1 (0 to 2)	1 (0 to 2)	0 (0 to 1)	1 (0 to 2)	1 (0 to 4)
Hospital admission to intubation, days ^{¶¶}	1 (0 to 3)	2 (1 to 7)	2 (1 to 3)	1 (0 to 2)	1 (0 to 3)	2 (0 to 5)
Antibiotic treatment on ICU admission	475/533 (89.1)	7/9 (77.8)	12/14 (85.7)	369/421 (87.6)	19/20 (95.0)	28/29 (96.6)
<i>Causes for ICU admission</i>						
Shock	99/534 (18.5)	2/7 (28.6)	1/14 (7.1)	188/423 (44.4)	9/20 (45.0)	13/26 (50.0)
Acute respiratory failure	500/542 (92.3)	8/9 (88.9)	13/14 (92.9)	386/430 (89.8)	18/20 (90.0)	28/29 (96.6)

Table 1 (continued)

	SARS-CoV-2 pneumonia <i>n</i> = 566			Influenza pneumonia <i>n</i> = 481		
	No putative IPA, or colonization (<i>n</i> = 543)	Aspergillus colonization (<i>n</i> = 9)	Putative IPA (<i>n</i> = 14)	No putative IPA, or colonization (<i>n</i> = 432)	Aspergillus colonization (<i>n</i> = 20)	Putative IPA (<i>n</i> = 29)
ARDS	370/538 (68.8)	6/9 (66.7)	8/14 (57.1)	192/422 (45.5)	13/20 (65.0)	15/26 (57.7)
Neurological failure	25/525 (4.8)	1/7 (14.3)	0/14 (0.0)	66/419 (15.8)	1/20 (5.0)	2/25 (8.0)
Cardiac arrest	3/524 (0.6)	0/7 (0.0)	0/14 (0.0)	23/419 (5.5)	0/20 (0.0)	2/25 (8.0)
Acute kidney injury	92/425 (17.5)	2/7 (28.6)	2/14 (14.3)	118/415 (28.4)	6/20 (30.0)	9/25 (36.0)

Values are as n/N (%) or median (interquartile range). [†]100 missing values (SARS-CoV-2, *n* = 32; influenza, *n* = 68); [‡]64 missing values (SARS-CoV-2, *n* = 43; influenza, *n* = 21); [§]25 missing values (SARS-CoV-2, *n* = 21; influenza, *n* = 4); ^{||}30 missing values (SARS-CoV-2, *n* = 19; influenza, *n* = 11); [¶]59 missing values (SARS-CoV-2, *n* = 31; influenza, *n* = 28); ^{‡‡}75 missing values (SARS-CoV-2, *n* = 42; influenza, *n* = 33)

McCabe classification of comorbidities and likelihood of survival, likely to survive > 5 years, 1–5 years, < 1 year; Chronic kidney disease, KDOQI CKD classification stage 4 or 5 (creatinine clearance < 30 ml/min); Chronic heart failure, NYHA class III or IV; Heart disease, ischemic heart disease or atrial fibrillation; Cirrhosis, Child–Pugh score B or C; antibiotic treatment on ICU admission, at least one dose of antibiotics in the first day of ICU stay; More than one cause for ICU admission is possible

ARDS, acute respiratory distress syndrome; COPD, chronic obstructive pulmonary disease; ICU, intensive care unit, SAPS II, simplified acute physiology score II; SOFA, sequential organ failure assessment

3-levels categorical variable: no putative IPA or Aspergillus colonization, versus Aspergillus colonization, and putative IPA. This model accounted for exposure time of IPA, by comparing at each follow-up time event point, the current IPA status of patients who have the event to patients who are at risk (without the event of interest and without the competing event for mechanical ventilation duration and length of ICU stay). The associations were further adjusted for the same previously mentioned confounders [24].

Statistical testing was performed at the two-tailed α level of 0.05. Data were analyzed using the SAS software package, release 9.4 (SAS Institute, Cary, NC).

Results

Patient characteristics at ICU admission

In total, 1047 patients were included (Fig. 1). Percentage of men, ARDS, and body mass index were higher in SARS-CoV-2 group than in influenza group. SAPS II, sequential organ failure assessment (SOFA) score, comorbidity scores, chronic diseases, rate of recent hospitalization, shock, cardiac arrest, neurological failure, or acute kidney injury were lower in SARS-CoV-2 pneumonia group, as compared to influenza pneumonia group (Table 1). The distribution of study patients in different centers is presented in Additional file 1: Table E3.

Patient characteristics during ICU stay

Percentage of prone positioning, as well as total duration of antimicrobial treatment were higher in SARS-CoV-2 pneumonia group than in influenza pneumonia group. Corticosteroid use, ECMO, and 28-day mortality rates

were comparable in the two groups. The dose of corticosteroids was higher in SARS-CoV-2 pneumonia group, as compared to influenza group (Table 2).

Incidence of putative IPA according to Blot definition

Seventy-two patients, from 25 out of 36 participating centers, were suspected by clinicians as having IPA, including 23 in SARS-CoV-2 group, and 49 in influenza group. Of these 72 patients, 43 were classified as putative IPA, and 29 as Aspergillus colonization, according to Blot definition. No proven IPA was diagnosed in study patients.

The incidence of putative IPA was significantly lower in SARS-CoV-2 pneumonia group than in influenza pneumonia group (Fig. 2A, Table 3). This difference remained significant after adjustment for confounding factors. Similarly, when combining putative IPA and Aspergillus respiratory tract colonization, the incidence was still significantly lower in SARS-CoV-2 group than in influenza group (Fig. 3, Table 3). The classification of study patients, based on different definitions, is presented in Additional file 1: Table E2.

Incidence of probable IPA according to Verweij definition

Among the 72 patients suspected by physicians as having IPA, 58 patients were classified as probable IPA according to Verweij definition. The incidence of probable IPA was also significantly lower in SARS-CoV-2 group, as compared to influenza group (Fig. 2B, Table 3). This difference remained significant after adjustment for confounding factors at ICU admission.

Table 2 Patient characteristics during ICU stay according to study group and aspergillosis status based on Blot definition

	SARS-CoV-2 pneumonia <i>n</i> = 566			Influenza pneumonia <i>n</i> = 481		
	No putative IPA, or colonization (<i>n</i> = 543)	Aspergillus colonization (<i>n</i> = 9)	Putative IPA (<i>n</i> = 14)	No putative IPA, or colonization (<i>n</i> = 432)	Aspergillus colonization (<i>n</i> = 20)	Putative IPA (<i>n</i> = 29)
Prone positioning	363/543 (66.9)	6/8 (75.0)	12/14 (85.7)	126/432 (29.2)	8/19 (42.1)	17/29 (58.6)
ECMO	58/542 (10.7)	0/9 (0.0)	2/14 (14.3)	49/432 (11.3)	5/19 (26.3)	6/28 (21.4)
Ventilator-associated lower respiratory tract infections	271/543 (49.9)	7/9 (77.8)	7/14 (50.0)	127/432 (29.4)	7/20 (35.0)	12/29 (41.4)
Antimicrobial treatment duration, days [†]	12 (7 to 18)	16 (10 to 19)	18 (8 to 20)	9 (6 to 16)	21 (12 to 28)	17 (9 to 27)
Corticosteroids	188/517 (36.4)	3/9 (33.3)	10/14 (71.4)	161/426 (37.8)	8/20 (40.0)	12/28 (42.9)
Hydrocortisone	55/512 (10.7)	2/9 (22.2)	2/14 (14.3)	92/424 (21.7)	7/20 (35.0)	7/28 (25.0)
Dexamethasone	44/512 (8.6)	0/9 (0.0)	4/14 (28.6)	1/424 (0.2)	0/20 (0.0)	0/28 (0.0)
Methylprednisolone	85/512 (16.6)	1/9 (11.1)	4/14 (28.6)	67/424 (15.8)	1/20 (5.0)	5/28 (17.9)
Highest daily dose, mg [‡]	100 (50 to 133)	50 (50 to 100)	100 (50 to 133)	50 (50 to 100)	50 (50 to 100)	63 (50 to 100)
<i>28-day outcomes</i>						
Mechanical ventilation duration, days	14 (8 to 22)	23 (12 to 28)	23 (17 to 28)	9 (5 to 18)	24 (11 to 28)	21 (12 to 28)
Ventilator-free days	6 (0 to 16)	0 (0 to 0)	1 (0 to 2)	13 (0 to 21)	1 (0 to 12)	0 (0 to 3)
ICU length of stay, days	17 (12 to 27)	28 (13 to 28)	25 (19 to 28)	13 (8 to 25)	28 (17 to 28)	25 (15 to 28)
ICU-free days	0 (0 to 12)	0 (0 to 0)	0 (0 to 0)	5 (0 to 18)	0 (0 to 2)	0 (0 to 0)
ICUmortality	154/543 (28.4)	4/9 (44.4)	5/14 (35.7)	111/432 (25.7)	3/20 (15.0)	11/29 (37.9)
28-day mortality	156/543 (28.7)	4/9 (44.4)	5/14 (35.7)	118/432 (27.3)	3/20 (15.0)	11/29 (37.9)

Values are as n/N (%) or median (interquartile range). [†]18 missing values (SARS-CoV-2, *n* = 15; influenza, *n* = 3); [‡]8 missing values (SARS-CoV-2, *n* = 4; influenza, *n* = 4)

Data are collected until day 28 or discharge of ICU

ECMO, extracorporeal membrane oxygenation; ICU, intensive care unit

Outcomes of putative IPA

In the whole study population, putative IPA was associated with significant increase in 28-day mortality rate, and length of ICU stay, compared with colonized patients, or those with no IPA or *Aspergillus* colonization. These results were not confirmed in the subgroups of patients with SARS-CoV-2 or influenza pneumonia. Only in influenza group, duration of mechanical ventilation, and ICU stay were significantly longer in patients with putative IPA, as compared with those with no putative IPA or *Aspergillus* colonization (Fig. 4).

Characteristics of patients with putative IPA

Median time from intubation to putative IPA diagnosis was longer in SARS-CoV-2 than in influenza group (11 vs. 6 days). Bronchoalveolar lavage was less frequently performed and antifungal treatment was less frequently prescribed in SARS-CoV-2 than in influenza group (Table 4).

Discussion

Overall, the incidence of putative IPA was low in patients with COVID-19 or influenza. Further, putative IPA incidence was significantly lower in SARS-CoV-2 pneumonia patients than in those with influenza pneumonia. Similar results were found regarding probable IPA, using Verweij definition. Putative IPA was associated with significantly higher 28-day mortality rate and length of ICU stay, compared with colonized patients, or those with no IPA or *Aspergillus* colonization. However, IPA was not significantly associated with increased duration of mechanical ventilation.

Incidence of invasive pulmonary aspergillosis

The incidence of IPA was low in our study, and some previous studies reported higher incidence of IAPA and CAPA [7, 12–14, 16, 17]. However, in most of these studies, screening for IPA was performed routinely. Further,

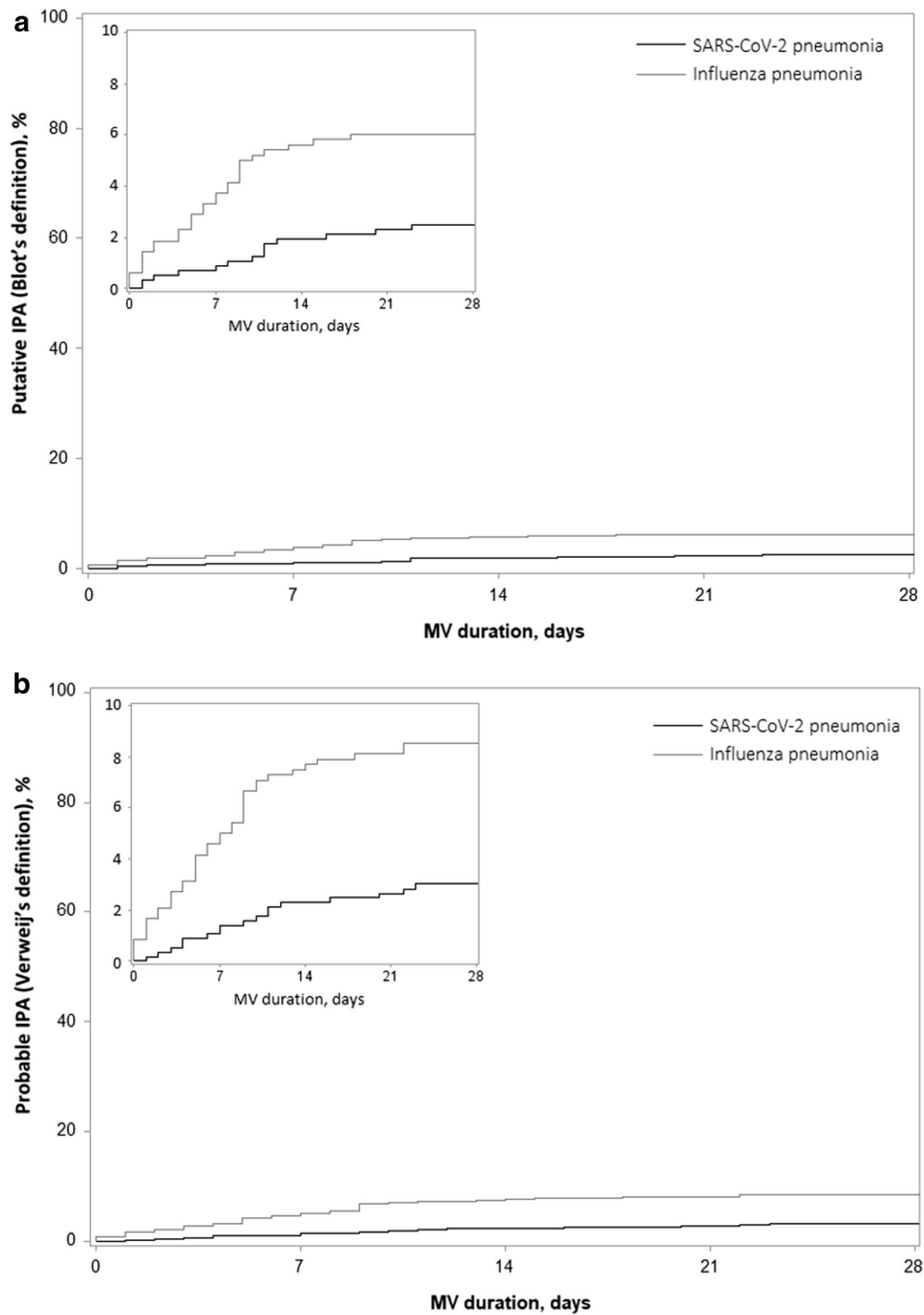


Fig. 2 Cumulative incidence of putative or probable invasive pulmonary aspergillosis according to Blot (A) and Verweij (B) definitions. Cumulative incidence was estimated using Kalbfleisch and Prentice method, considering extubation (alive or due to death) within 28 days as competing event. Time axis starts at the day of intubation. IPA, invasive pulmonary aspergillosis, MV, mechanical ventilation

Table 3 Incidence of invasive pulmonary aspergillosis

	SARS-CoV-2 pneumonia n = 566	Influenza pneumonia n = 481	Unadjusted cHR (95% CI)	Adjusted cHR* (95% CI)	p value*
<i>Blot definition</i>					
Putative invasive pulmonary aspergillosis	14/566 (2.5)	29/481 (6.0)	3.07 (1.52 to 6.19)	3.29 (1.53 to 7.02)	0.0006
Putative invasive pulmonary aspergillosis or Aspergillus colonization	23/566 (4.1)	49/481 (10.2)	3.17 (1.87 to 5.35)	3.21 (1.88 to 5.46)	< 0.0001
<i>Verweij definition</i>					
Probable invasive pulmonary aspergillosis	17/566 (3.0)	41/481 (8.5)	3.54 (1.86 to 6.73)	3.78 (1.96 to 7.27)	< 0.0001

Values are number of invasive pulmonary aspergillosis (28-day cumulative incidence expressed as %, considering extubation (dead or alive) as a competing event) cHR calculated using cause-specific Cox's proportional hazard model with sandwich covariance estimation to account for center clustering effect

* Adjusted for pre-specified confounders (simplified acute physiology score II, chronic obstructive pulmonary disease, immunosuppression, recent antibiotic treatment, acute respiratory distress syndrome, corticosteroid treatment), and calculated after handling missing values on covariates by multiple imputation cHR, cause-specific hazard ratio; CI, confidence interval

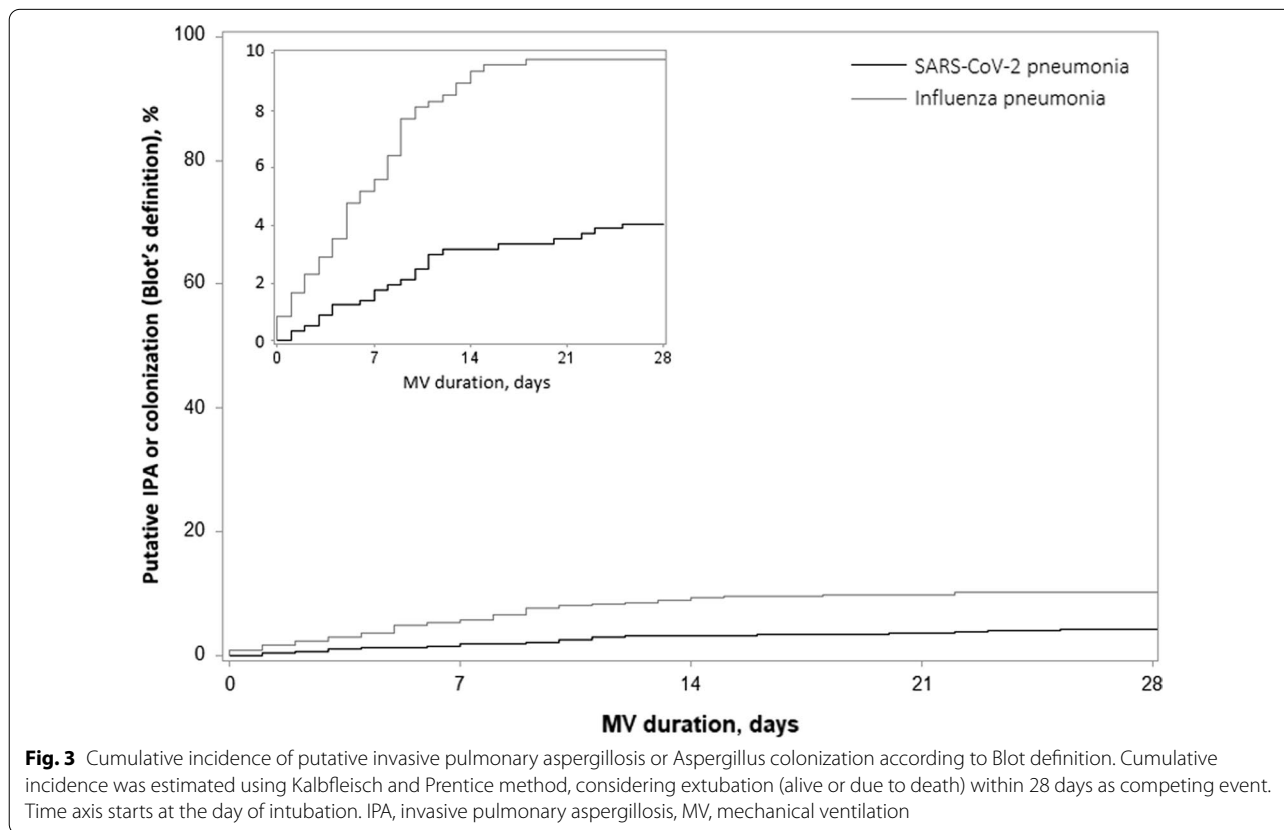


Fig. 3 Cumulative incidence of putative invasive pulmonary aspergillosis or Aspergillus colonization according to Blot definition. Cumulative incidence was estimated using Kalbfleisch and Prentice method, considering extubation (alive or due to death) within 28 days as competing event. Time axis starts at the day of intubation. IPA, invasive pulmonary aspergillosis, MV, mechanical ventilation

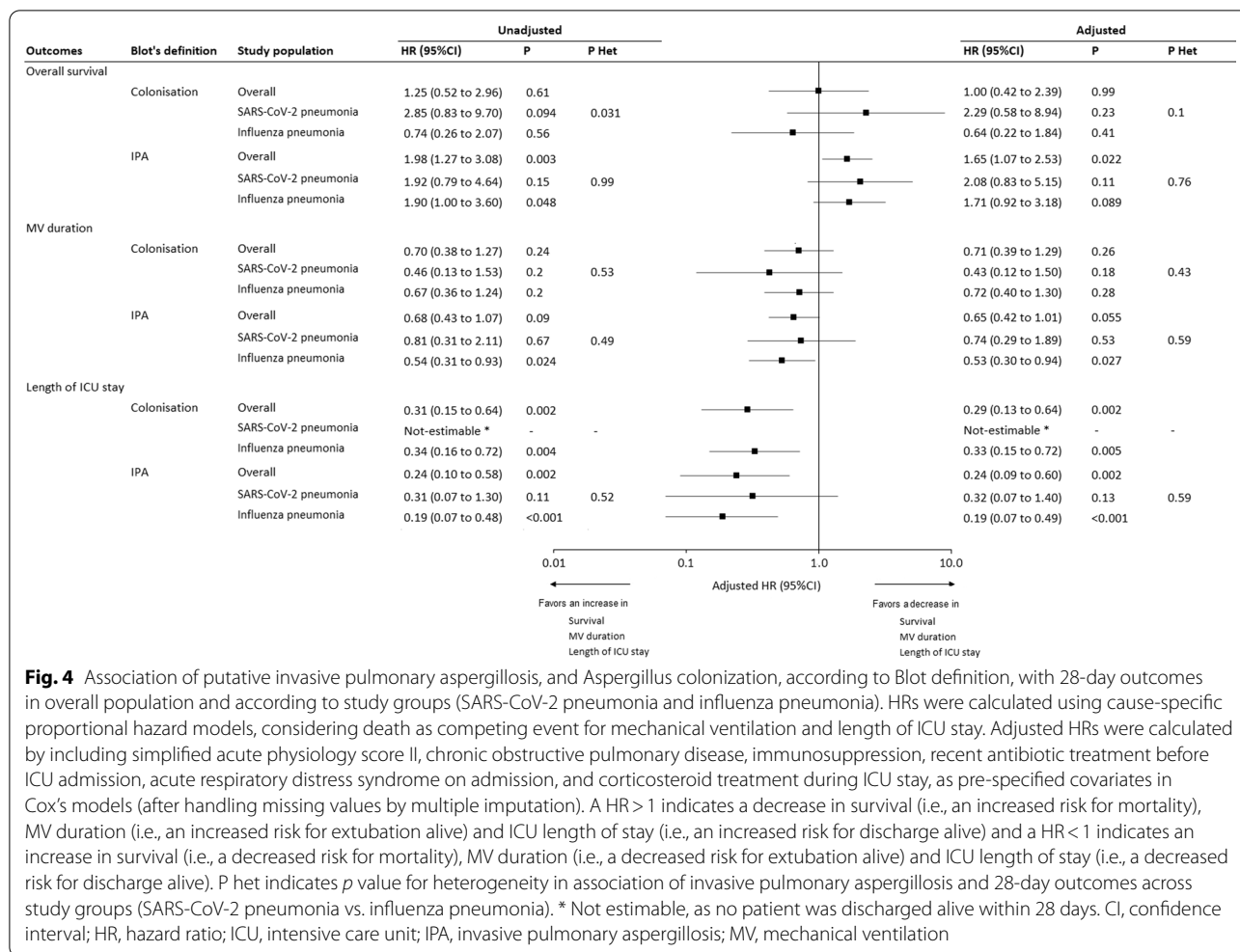


Fig. 4 Association of putative invasive pulmonary aspergillosis, and Aspergillus colonization, according to Blot definition, with 28-day outcomes in overall population and according to study groups (SARS-CoV-2 pneumonia and influenza pneumonia). HRs were calculated using cause-specific proportional hazard models, considering death as competing event for mechanical ventilation and length of ICU stay. Adjusted HRs were calculated by including simplified acute physiology score II, chronic obstructive pulmonary disease, immunosuppression, recent antibiotic treatment before ICU admission, acute respiratory distress syndrome on admission, and corticosteroid treatment during ICU stay, as pre-specified covariates in Cox's models (after handling missing values by multiple imputation). A HR > 1 indicates a decrease in survival (i.e., an increased risk for mortality), MV duration (i.e., an increased risk for extubation alive) and ICU length of stay (i.e., an increased risk for discharge alive) and a HR < 1 indicates an increase in survival (i.e., a decreased risk for mortality), MV duration (i.e., a decreased risk for extubation alive) and ICU length of stay (i.e., a decreased risk for discharge alive). P het indicates p value for heterogeneity in association of invasive pulmonary aspergillosis and 28-day outcomes across study groups (SARS-CoV-2 pneumonia vs. influenza pneumonia). * Not estimable, as no patient was discharged alive within 28 days. CI, confidence interval; HR, hazard ratio; ICU, intensive care unit; IPA, invasive pulmonary aspergillosis; MV, mechanical ventilation

patients with no routine screening were excluded. For example, in the recent multicenter Mycovid study [16], only patients with at least 3 screening samples performed within 2 weeks were analyzed, which resulted in overestimating the reported incidence of CAPA (15%). The population at risk are all patients receiving mechanical ventilation, and not only those receiving > 2 weeks of invasive mechanical ventilation. Another potential explanation for the high incidence of IPA reported in these studies is the false positive results of galactomannan in some patients, which is supported by the absence of positive impact of antifungal treatment on mortality, and the fact that some patients with CAPA survived in spite of absence of any antifungal treatment [13]. On the other hand, other well-performed single and multicenter studies reported lower incidence of IPA in influenza and COVID-19 patients [9, 10, 18, 25], which is in line with our findings. Geographical distribution and different case definitions might explain the variation in IPA incidence.

Comparison of invasive pulmonary aspergillosis incidence between COVID-19 and influenza patients

Our results suggest that IPA incidence might be lower in COVID-19 patients, compared with influenza patients. Several explanations could be provided for this result. First, the percentage of patients with immunosuppression at ICU admission was lower in COVID-19 than in influenza patients (8.8% vs. 22%). However, adjustment was performed for immunosuppression, as well as for other potential confounders. Second, BAL was performed less frequently in COVID-19 than in influenza patients, which might have underestimated the incidence of IPA in the first group. This could be explained by the fear of SARS-CoV-2 aerosolization and transmission to health workers at the beginning of the pandemic. Other factors, such as most severe ARDS, and more common prone position use in COVID-19 than in influenza patients could also explain the lower rate of BAL in COVID-19 patients. Third, the mechanism of entry of SARS-CoV-2, and influenza into the lower respiratory tract, and the

Table 4 Characteristics of patients with putative invasive pulmonary aspergillosis, according to Blot definition

	SARS-CoV-2 pneumonia n = 14	Influenza pneumonia n = 29
Time from hospital admission to IPA diagnosis	12 (7 to 14)	9 (6 to 11)
Time from ICU admission to IPA diagnosis	11 (5 to 13)	6 (2 to 10)
Time from intubation to IPA diagnosis	11 (4 to 12)	6 (2 to 9)
<i>Clinical presentation at the time of IPA diagnosis</i>		
Hemoptysis	2/14 (14.3)	4/29 (13.8)
Respiratory worsening	14/14 (100.0)	24/29 (82.8)
New or increased fever	12/14 (85.7)	15/29 (51.7)
<i>Imaging at the time of IPA diagnosis</i>		
Abnormal medical imaging (chest X-ray or CT scan)	14/14 (100.0)	29/29 (100.0)
<i>Predominant lesion on chest CT:</i>		
Dense, well-circumscribed lesion with or without a halo sign	0/5 (0.0)	3/23 (13.0)
Air-crescent sign	0/5 (0.0)	0/23 (0.0)
Cavity	0/5 (0.0)	2/23 (8.7)
Segmental or lobar consolidation	3/5 (60.0)	9/23 (39.1)
Other	2/5 (40.0)	9/23 (39.1)
<i>Serum samples during ICU stay</i>		
Galactomannan index > 0.5	6/12 (50.0)	20/26 (76.9)
Galactomannan index at the time of IPA diagnosis [†]	0.2 (0.0 to 0.6)	0.2 (0.1 to 1.4)
Highest Galactomannan index [‡]	0.2 (0.1 to 0.8)	0.5 (0.1 to 1.4)
1,3-β-D-glucan level at time of IPA diagnosis (pg/mL) [§]	63 (30 to 450)	111 (47 to 384)
Highest level of 1,3-β-D-glucan (pg/mL)	170 (39 to 760)	178 (56 to 501)
<i>Respiratory samples leading to IPA diagnosis</i>		
<i>Type of respiratory samples:</i>		
Broncho-alveolar lavage	9/14 (64.3)	25/29 (86.2)
Endotracheal aspirate	7/14 (50.0)	5/29 (17.2)
Protected specimen brush	0/14 (0.0)	5/29 (17.2)
Galactomannan index ≥ 1	4/5 (80.0)	12/17 (70.6)
Galactomannan index [¶]	3.9 (2.5 to 5.6)	2.1 (0.9 to 5.8)
Positive <i>Aspergillus</i> PCR	9/12 (75.0)	11/15 (73.3)
Mycological culture	14/14 (100.0)	29/29 (100.0)
<i>Identified species</i>		
<i>Aspergillus fumigatus</i>	10/14 (71.4)	24/27 (88.9)
<i>Aspergillus niger</i>	0/14 (0.0)	1/27 (3.7)
<i>Aspergillus flavus</i>	0/14 (0.0)	1/27 (3.7)
<i>Aspergillus terreus</i>	1/14 (7.1)	1/27 (3.7)
Other species	3/14 (21.4)	0/27 (0.0)
<i>Antifungal treatment against aspergillosis</i>		
Initiation of antifungal treatment	11/14 (78.6)	27/29 (93.1)
Time from IPA diagnosis to first treatment [□]	1 (-1 to 2)	0 (0 to 2)
<i>First antifungal treatment</i>		
Voriconazole	7/11 (63.6)	22/27 (81.5)
Isavuconazole	1/11 (9.1)	0/27 (0.0)
Caspofungin	2/11 (18.2)	2/27 (7.4)
Anidulafungin	0/11 (0.0)	1/27 (3.7)
Liposomal Amphotericin B	1/11 (9.1)	2/27 (7.4)
<i>Number of treatment lines used</i>		
1	7/14 (50.0)	17/29 (58.6)
2	3/14 (21.4)	7/29 (24.1)
3	1/14 (7.1)	3/29 (10.3)

Table 4 (continued)

Values are as n/N (%) or median (interquartile range). [†]10 missing values (SARS-CoV-2, n = 4; influenza, n = 6); [‡]5 missing values (SARS-CoV-2, n = 2; influenza, n = 3); [§]20 missing values (SARS-CoV-2, n = 5; influenza, n = 15); ^{||}15 missing values (SARS-CoV-2, n = 4; influenza, n = 11); ^{*}22 missing values (SARS-CoV-2, n = 5; influenza, n = 17); [°]5 missing values (SARS-CoV-2, n = 3; influenza, n = 2)

Respiratory worsening is defined by significant PaO₂/FiO₂ ratio deterioration within 72 h of IPA diagnosis. New or increased fever is defined within 72 h of IPA diagnosis. All patients were intubated on the day of IPA diagnosis. More than one respiratory sample may be performed for IPA diagnosis

ICU, intensive care unit; IPA, invasive pulmonary aspergillosis; PCR, polymerase chain reaction

pulmonary lesions associated with these viruses are different [26, 27]. This suggests that the lower incidence of IPA in COVID-19 patients might be specifically related to SARS-CoV-2 infection.

Impact of invasive pulmonary aspergillosis on outcomes

In the whole study population, combining COVID-19 and influenza patients, IPA was significantly associated with increased 28-day mortality and ICU length of stay. However, the relationship between IPA and duration of mechanical ventilation did not reach significance. In subgroup analyses, IPA was associated with increased duration of mechanical ventilation and ICU length of stay in influenza, but not in COVID-19 patients. Our study is probably underpowered to determine the relationship between IPA and outcomes, or the relationship between antifungal treatment and outcomes. However, previous studies have shown a negative impact on outcome in IAPA and CAPA patients [7, 12].

Strengths and limitations

To the best of our knowledge, our study is the first large multicenter cohort to compare the incidence of IPA between COVID-19 and influenza patients. Further, competing risk analysis, and cause-specific Cox models were used to adjust for potential confounders. However, several limitations should be acknowledged. First, the study was retrospective and there was no systematic screening for IPA, which might have underestimated the overall IPA incidence. Nevertheless, physicians prospectively identified IPA, based on clinical suspicion; and a recent taskforce recommended against routine screening for IPA in critically ill patients [23]. Second, no information was available on bronchoscopy macroscopic data, which may have also led to underestimating the incidence of IPA, because *Aspergillus* tracheobronchitis could not be diagnosed. Third, no information could be provided on galactomannan in some study patients, which might have also reduced the incidence of probable IPA. Fourth, the evaluation of the two diseases was not done simultaneously because of the absence of influenza during COVID-19 pandemic. Fifth, this study was conducted in Europe, mostly in France, and the results may not be generalizable to other parts of the world. Finally, we chose to use Blot definition for putative IPA, because this definition was validated using histological data in a

large international study. However, galactomannan is not considered by this definition and some patients could have IPA with no *Aspergillus* identified in respiratory specimen. This might have also resulted in underestimating the overall incidence of IPA. However, Verweij definition was also used as a secondary outcome and although the overall IPA incidence was slightly higher in the two groups, IPA incidence was still significantly lower in COVID-19 than in influenza patients.

Conclusions

Overall, the incidence of IPA was low in study patients. Further, putative IPA incidence was lower in SARS-CoV-2 pneumonia than in influenza pneumonia patients. Our study was performed at the beginning of COVID-19 pandemic, it would be interesting to determine how IPA incidence has evolved, especially with routine use of corticosteroids in COVID-19 patients. Screening for IPA should be performed, based on recent recommendations, in patients with clinical deterioration or absence of improvement.

Abbreviations

ARDS: Acute respiratory distress syndrome; CAPA: COVID-19-associated IPA; CI: Confidence interval; COPD: Chronic obstructive pulmonary disease; COVID: Coronavirus disease; HR: Hazard ratio; ICU: Intensive care unit; IPA: Invasive pulmonary aspergillosis; IAPA: Influenza-associated IPA; MV: Mechanical ventilation; SAPS II: Simplified acute physiology score II; SARS-CoV-2: Severe acute respiratory syndrome coronavirus 2; SOFA: Sequential organ failure assessment.

Supplementary Information

The online version contains supplementary material available at <https://doi.org/10.1186/s13054-021-03874-1>.

Additional file 1. Further details on methods and results.

Acknowledgements

In addition to the authors, the coVAPid study group includes the following collaborators (information to include for individual PubMed record): Mathilde Bouchereau, CHU de Lille, Centre de Réanimation, F-59000 Lille, France. Boualem Sendid, INSERM U1285, CNRS UMR 8576, Glycobiology in Fungal Pathogenesis and Clinical Applications, Université de Lille; and Pôle de Biologie-Pathologie-Génétique, Institut de Microbiologie, Service de Parasitologie Mycologie, CHU Lille, F-59000 Lille, France. Sean Boyd, Department of Intensive Care Medicine, Multidisciplinary Intensive Care Research Organization (MICRO), St. James's Hospital, Dublin, Ireland. Luis Coelho, Polyvalent Intensive Care Unit, Hospital de São Francisco Xavier, CHLO, Lisbon, Portugal. NOVA Medical School, CHRC, New University of Lisbon, Portugal. Julien Maizel,

Service de médecine intensive réanimation, CHU Amiens Picardie, 80000 Amiens, France. Pierre Cuchet, Department of Medical Intensive Care, Caen University Hospital, F-14000 Caen, France. Wafa Zarrougui, Service de réanimation polyvalente, Centre hospitalier de Valenciennes, Valenciennes, France. Déborah Boyer, Medical Intensive Care Unit, Rouen University Hospital, 76000 Rouen, France. Jean-Pierre Quenot, Department of Intensive Care, François Mitterrand University Hospital, Dijon, France. Mehdi Imoulouedene, Service de réanimation et de soins intensifs, Centre hospitalier de Douai, Douai, France. Marc Pineton de Chambrun, Service de Médecine Intensive Réanimation, Institut de Cardiologie, Groupe Hospitalier Pitié-Salpêtrière, Assistance Publique – Hôpitaux de Paris, Paris Cedex 13, France. Thierry Van Der Linden, Service de médecine intensive réanimation, Hôpital Saint Philibert GHICL, Université catholique, Lille, France. François Arrive, CHU de Poitiers, Médecine Intensive Réanimation, CIC 1402 ALIVE, Université de Poitiers, Poitiers, France. Sebastian Voicu, Department of Medical and Toxicological Critical Care, Lariboisière Hospital, INSERM UMRS-1144, Paris University, Paris, France. Elie Azoulay, Service de médecine intensive réanimation, Hôpital Saint-Louis, 75010 Paris, France. Edgard Moglia, Critical Care Department, Hospital Universitari Parc Taulí, Sabadell, Spain Frédéric Pene, Medical Intensive Care Unit, Cochin Hospital, Assistance Publique – Hôpitaux de Paris, Paris, France. Catia Cilloniz, Department of Pulmonology, Hospital Clinic of Barcelona, University of Barcelona, IDIBAPS, CIBERES, Barcelona, Spain. Didier Thevenin, Service de réanimation polyvalente, Centre Hospitalier de Lens, Lens, France. Charlotte Larrat, Service de Médecine Intensive Réanimation, CHU de Tours, Hôpital Bretonneau, 37044 Tours Cedex 9, France. Laurent Argaud, Service de Médecine Intensive—Réanimation, Hôpital Edouard Herriot, Hospices Civils de Lyon, 69437 Lyon Cedex 03, France. Bertrand Guidet, Service de Médecine Intensive Réanimation, Hôpital Saint-Antoine, Assistance Publique-Hôpitaux de Paris, 75012 Paris, France. Matthieu Turpin, Sorbonne Université, Assistance Publique-Hôpitaux de Paris, Service de Médecine Intensive Réanimation, Hôpital Tenon, Paris, France. Damien Contou, Service de réanimation polyvalente, CH Victor Dupouy, Argenteuil, France. Alexandra Beurton, Service de Médecine Intensive-Réanimation et Pneumologie, Assistance Publique-Hôpitaux de Paris, Hôpital Pitié Salpêtrière, France. Julien Demiselle, Département de Médecine Intensive Réanimation, CHU d'Angers, 49933 Angers Cedex 9, France. David Meguerditchian, Service de médecine intensive réanimation, CHU de Bordeaux, F-33000 Bordeaux, France. Keyvan Razazi, Assistance Publique-Hôpitaux de Paris, Hôpitaux Universitaires Henri-Mondor, Service de Médecine Intensive Réanimation ; Université Paris Est Créteil, CARMAS ; INSERM U955, Institut Mondor de recherche Biomédicale ; F-94010 Créteil, France. Romain Arrestier, Assistance Publique-Hôpitaux de Paris, Hôpitaux Universitaires Henri-Mondor, Service de Médecine Intensive Réanimation ; Université Paris Est Créteil, CARMAS ; INSERM U955, Institut Mondor de recherche Biomédicale ; F-94010 Créteil, France. Vassiliki Tsolaki, Intensive Care Unit, University Hospital of Larissa, University of Thessaly, Biopolis Larissa, 41110 Greece. Mehdi Marzouk, Intensive Care Unit, Hôpital de Béthune, 62408 Béthune, France. Guillaume Brunin, Service de réanimation, Hôpital Duchenne, 62200 Boulogne-sur-Mer, France. Nicolas Weiss, Sorbonne Université, Assistance Publique-Hôpitaux de Paris, Sorbonne Université, Hôpital de la Pitié-Salpêtrière, Département de Neurologie, Unité de Médecine Intensive Réanimation Neurologique, Paris, France. Luis Morales, Intensive Care Unit, Hospital Universitari Sagrat Cor, Barcelona, Spain.

Authors' contributions

AR, EL, IML, PP, AD, JL, and SN conceptualized and designed the study. All authors acquired the data, drafted or critically revised the manuscript for important intellectual content, and gave final approval of the submitted version. AR, EL, IML, PP, RN, AT, AD, JL, and SN analyzed and interpreted the data. SN was guarantor of the paper. All authors read and approved the final manuscript.

Funding

This study was supported in part by a grant from the French government through the « Programme Investissement d'Avenir » (I-SITE ULNE) managed by the Agence Nationale de la Recherche (coVAPid project). Prof. Ignacio Martin-Loeches has been supported by SFI (Science Foundation Ireland), Grant Number 20/COV/0038. The funders of the study had no role in the study design, data collection, analysis, or interpretation, writing of the report, or decision to submit for publication.

Availability of data and materials

All data needed to evaluate the conclusions in this article are present and tabulated in the main text or the appendix. This article is the result of an original retrospective cohort. For individual de-identified raw data that underlie the results reported in this article, please contact the corresponding author.

Declarations

Ethics approval and consent to participate

The Ethics Committee and Institutional Review Boards approved the study protocol (Comité de Protection des Personnes Ouest VI; approved by April 14, 2020; registration number RIPH:20.04.09.60039) as minimal-risk research using data collected for routine clinical practice and waived the requirement for informed consent.

Consent for publication

Not applicable.

Competing interests

AR received personal fees from Maat Pharma, IML received personal fees from MSD, and Gilead. AA received personal fees from Lilly Foundation, and grants from Grifols and Fisher & Paykel. CEL received personal fees from Bayer, Merck, Aerogen, Biomérieux, ThermoFisher Brahms, and Carmat. SN received personal fees from MSD, Bio-Rad, BioMérieux, Gilead, Fisher and Paykel, and Pfizer. All other authors declare no competing interests.

Author details

¹CHU de Lille, Médecine Intensive-Réanimation, 59000 Lille, France. ²INSERM U1285, CNRS, UMR 8576 – UGSF – Unité de Glycobiologie Structurale et Fonctionnelle, Université de Lille, 59000 Lille, France. ³Department of Intensive Care Medicine, Multidisciplinary Intensive Care Research Organization (MICRO), St. James's Hospital, Dublin, Ireland. ⁴Department of Clinical medicine, School of Medicine, Trinity College Dublin, Dublin, Ireland. ⁵Hospital Clinic, IDIBAPS, Universidad de Barcelona, Ciberes, Barcelona, Spain. ⁶Polyvalent Intensive Care Unit, Hospital de São Francisco Xavier, CHLO, Lisbon, Portugal. ⁷NOVA Medical School, CHRC, New University of Lisbon, Lisbon, Portugal. ⁸Center for Clinical Epidemiology and Research Unit of Clinical Epidemiology, OUH Odense University Hospital, Odense, Denmark. ⁹Critical Care Department, Hospital Universitari Parc Taulí, Sabadell, Departament de Medicina, Universitat Autònoma de Barcelona, Barcelona, Spain. ¹⁰Service de médecine intensive réanimation, CHU Amiens Picardie, 80000 Amiens, France. ¹¹Department of Pulmonology, Hospital Clinic of Barcelona, IDIBAPS, CIBERES, University of Barcelona, Barcelona, Spain. ¹²Department of Medical Intensive Care, Caen University Hospital, 14000 Caen, France. ¹³Service de réanimation polyvalente, Centre hospitalier de Valenciennes, Valenciennes, France. ¹⁴Medical Intensive Care Unit, UNIROUEN, Inserm U1096, FHU- REMOD-VHF, Rouen University Hospital, 76000 Rouen, France. ¹⁵Department of Intensive Care, François Mitterrand University Hospital, Dijon, France. ¹⁶Service de réanimation et de soins intensifs, Centre hospitalier de Douai, Douai, France. ¹⁷Service de Médecine Intensive Réanimation, Institut de Cardiologie, Groupe Hospitalier Pitié-Salpêtrière, Assistance Publique – Hôpitaux de Paris, Paris Cedex 13, France. ¹⁸Service de réanimation, Centre hospitalier de Roubaix, Roubaix, France. ¹⁹Service de médecine intensive réanimation, Hôpital Saint Philibert GHICL, Université catholique, Lille, France. ²⁰CHU de Poitiers, Médecine Intensive Réanimation, CIC 1402 ALIVE, Université de Poitiers, Poitiers, France. ²¹Department of Medical and Toxicological Critical Care, Lariboisière Hospital, INSERM UMRS-1144, Paris University, Paris, France. ²²Service de médecine intensive réanimation, Hôpital Saint-Louis, 75010 Paris, France. ²³First Department of Critical Care Medicine, Medical School, Evangelismos Hospital, National and Kapodistrian University of Athens, Athens, Greece. ²⁴Medical Intensive Care Unit, Cochin Hospital, Assistance Publique – Hôpitaux de Paris, Paris, France. ²⁵First Department of Pulmonary Medicine and Intensive Care Unit, Sotiria Chest Hospital, National and Kapodistrian University of Athens, Athens, Greece. ²⁶Service de réanimation polyvalente, Centre Hospitalier de Lens, Lens, France. ²⁷Service de Médecine Intensive Réanimation, CHU de Nantes, Nantes, France. ²⁸Service de Médecine Intensive Réanimation, CHU de Tours, Hôpital Bretonneau, 37044 Tours Cedex 9, France.

²⁹Service de Médecine Intensive - Réanimation, Hôpital Edouard Herriot, Hospices Civils de Lyon, 69437 Lyon Cedex 03, France. ³⁰Service de Médecine Intensive Réanimation, Hôpital Saint-Antoine, Assistance Publique-Hôpitaux de Paris, 75012 Paris, France. ³¹Assistance Publique-Hôpitaux de Paris, Service de Médecine Intensive Réanimation, Hôpital Tenon, Sorbonne Université, Paris, France. ³²Service de réanimation polyvalente, CH Victor Dupouy, Argenteuil, France. ³³Service de Médecine Intensive-Réanimation et Pneumologie, Hôpital Pitié Salpêtrière, Assistance Publique-Hôpitaux de Paris, Paris, France. ³⁴Inserm UMRS Neurophysiologie respiratoire expérimentale et clinique, Assistance Publique-Hôpitaux de Paris, Hôpital Pitié Salpêtrière, Sorbonne Université, Paris, France. ³⁵Département de Médecine Intensive Réanimation, CHU d'Angers, 49933 Angers Cedex 9, France. ³⁶Service de médecine intensive réanimation, CHU de Bordeaux, 33000Bordeaux, France. ³⁷Assistance Publique-Hôpitaux de Paris, Hôpitaux Universitaires Henri-Mondor, Service de Médecine Intensive Réanimation, CARMAS ; INSERM U955, Institut Mondor de recherche Biomédicale, Université Paris Est Créteil, 94010 Créteil, France. ³⁸Intensive Care Unit, University Hospital of Larissa, University of Thessaly, 41110 Biopolis Larissa, Greece. ³⁹Intensive Care Unit, Hôpital de Béthune, 62408 Béthune, France. ⁴⁰Service de réanimation, Hôpital Duchenne, 62200 Boulogne-sur-Mer, France. ⁴¹Assistance Publique-Hôpitaux de Paris, Sorbonne Université, Hôpital de la Pitié-Salpêtrière, Département de Neurologie, Unité de Médecine Intensive Réanimation Neurologique, Sorbonne Université, Paris, France. ⁴²Brain Liver Pitié-Salpêtrière (BLIPS) Study Group, INSERM UMR_S 938, Centre de recherche Saint-Antoine, Maladies métaboliques, biliaires et fibro-inflammatoire du foie, Institute of Cardiometabolism and Nutrition (ICAN), Sorbonne Université, Paris, France. ⁴³Intensive Care Unit, IDIBAPS, CIBERES, Hospital Universitari Sagrat Cor, Barcelona, Spain. ⁴⁴Critical Care Center, Corporación Sanitaria Universitaria Parc Tauli, CIBER Enfermedades Respiratorias, Autonomous University of Barcelona, Sabadell, Spain. ⁴⁵CNRS, Inserm, CHU Lille, Institut Pasteur de Lille, U1019-UMR9017-CIL-Centre d'Infection et d'Immunité de Lille, Univ. Lille, Lille, France. ⁴⁶Institut de Microbiologie, Service de Parasitologie Mycologie, CHU Lille, Pôle de Biologie-Pathologie-Génétique, 59000 Lille, France. ⁴⁷ULR 2694-METRICS : Evaluation des technologies de santé et des pratiques médicales, Univ. Lille, 59000 Lille, France. ⁴⁸Biostatistics Department, CHU de Lille, 59000 Lille, France. ⁴⁹Centre de Réanimation, CHU de Lille, 59000 Lille, France. ⁵⁰INSERM U1285, CNRS UMR 8576, Glycobiology in Fungal Pathogenesis and Clinical Applications, Université de Lille ; and Pôle de Biologie-Pathologie-Génétique, Institut de Microbiologie, Service de Parasitologie Mycologie, CHU Lille, 59000 Lille, France. ⁵¹Department of Intensive Care Medicine, Multidisciplinary Intensive Care Research Organization (MICRO), St. James's Hospital, Dublin, Ireland. ⁵²Polyvalent Intensive Care Unit, Hospital de São Francisco Xavier, CHLO, Lisbon, Portugal. ⁵³NOVA Medical School, CHRC, New University of Lisbon, Lisbon, Portugal. ⁵⁴Service de médecine intensive réanimation, CHU Amiens Picardie, 80000 Amiens, France. ⁵⁵Department of Medical Intensive Care, Caen University Hospital, 14000 Caen, France. ⁵⁶Service de réanimation polyvalente, Centre hospitalier de Valenciennes, Valenciennes, France. ⁵⁷Medical Intensive Care Unit, Rouen University Hospital, 76000 Rouen, France. ⁵⁸Department of Intensive Care, François Mitterrand University Hospital, Dijon, France. ⁵⁹Centre hospitalier de Douai, Service de réanimation et de soins intensifs, Douai, France. ⁶⁰Service de Médecine Intensive Réanimation, Institut de Cardiologie, Groupe Hospitalier Pitié-Salpêtrière, Assistance Publique - Hôpitaux de Paris, Paris Cedex 13, France. ⁶¹Service de médecine intensive réanimation, Hôpital Saint Philibert GHICL, Université Catholique, Lille, France. ⁶²CHU de Poitiers, Médecine Intensive Réanimation, CIC 1402 ALIVE, Université de Poitiers, Poitiers, France. ⁶³Department of Medical and Toxicological Critical Care, Lariboisière Hospital, INSERM UMRS-1144, Paris University, Paris, France. ⁶⁴Service de médecine intensive réanimation, Hôpital Saint-Louis, 75010 Paris, France. ⁶⁵Critical Care Department, Hospital Universitari Parc Tauli, Sabadell, Spain. ⁶⁶Medical Intensive Care Unit, Cochin Hospital, Assistance Publique - Hôpitaux de Paris, Paris, France. ⁶⁷Department of Pulmonology, Hospital Clinic of Barcelona, IDIBAPS, CIBERES, University of Barcelona, Barcelona, Spain. ⁶⁸Service de réanimation polyvalente, Centre Hospitalier de Lens, Lens, France. ⁶⁹Service de Médecine Intensive Réanimation, CHU de Tours, Hôpital Bretonneau, 37044 Tours Cedex 9, France. ⁷⁰Service de Médecine Intensive - Réanimation, Hôpital Edouard Herriot, Hospices Civils de Lyon, 69437 Lyon Cedex 03, France. ⁷¹Service de Médecine Intensive Réanimation, Hôpital Saint-Antoine, Assistance Publique-Hôpitaux de Paris, 75012 Paris, France. ⁷²Assistance Publique-Hôpitaux de Paris, Service de Médecine Intensive Réanimation, Hôpital Tenon, Sorbonne Université, Paris, France. ⁷³Service de réanimation

polyvalente, CH Victor Dupouy, Argenteuil, France. ⁷⁴Service de Médecine Intensive-Réanimation et Pneumologie, Assistance Publique-Hôpitaux de Paris, Hôpital Pitié Salpêtrière, Paris, France. ⁷⁵Département de Médecine Intensive Réanimation, CHU d'Angers, 49933 Angers Cedex 9, France. ⁷⁶Service de médecine intensive réanimation, CHU de Bordeaux, 33000 Bordeaux, France. ⁷⁷Assistance Publique-Hôpitaux de Paris, Hôpitaux Universitaires Henri-Mondor, Service de Médecine Intensive Réanimation , CARMAS ; INSERM U955, Institut Mondor de recherche Biomédicale, Université Paris Est Créteil, 94010 Créteil, France. ⁷⁸Assistance Publique-Hôpitaux de Paris, Hôpitaux Universitaires Henri-Mondor, Service de Médecine Intensive Réanimation, CARMAS ; INSERM U955, Institut Mondor de recherche Biomédicale, Université Paris Est Créteil, 94010 Créteil, France. ⁷⁹Intensive Care Unit, University Hospital of Larissa, University of Thessaly, 41110 Biopolis Larissa, Greece. ⁸⁰Intensive Care Unit, Hôpital de Béthune, 62408 Béthune, France. ⁸¹Service de réanimation, Hôpital Duchenne, 62200 Boulogne-sur-Mer, France. ⁸²Assistance Publique-Hôpitaux de Paris, Sorbonne Université, Hôpital de la Pitié-Salpêtrière, Département de Neurologie, Unité de Médecine Intensive Réanimation Neurologique, Sorbonne Université, Paris, France. ⁸³Intensive Care Unit, Hospital Universitari Sagrat Cor, Barcelona, Spain.

Received: 22 October 2021 Accepted: 17 December 2021

Published online: 04 January 2022

References

- Delsuc C, Cottreau A, Frealle E, Bienvenu A-L, Dessein R, Jarraud S, et al. Putative invasive pulmonary aspergillosis in critically ill patients with chronic obstructive pulmonary disease: a matched cohort study. *Crit Care*. 2015;19.
- Contou D, Dorison M, Rosman J, Schlemmer F, Gibelin A, Foulet F, et al. Aspergillus-positive lower respiratory tract samples in patients with the acute respiratory distress syndrome: a 10-year retrospective study. *Ann Intensive Care*. 2016;6:52.
- Levesque E, Ait-Ammar N, Dudau D, Clavieras N, Feray C, Foulet F, et al. Invasive pulmonary aspergillosis in cirrhotic patients: analysis of a 10-year clinical experience. *Ann Intensive Care*. 2019;9:31.
- Gustot T, Maillart E, Bocci M, Surin R, Trépo E, Degré D, et al. Invasive aspergillosis in patients with severe alcoholic hepatitis. *J Hepatol*. 2014;60:267–74.
- Pardo E, Lemiale V, Mokart D, Stoclin A, Moreau A-S, Kerhuel L, et al. Invasive pulmonary aspergillosis in critically ill patients with hematological malignancies. *Intensive Care Med*. 2019;45:1732–41.
- Taccone FS, Van den Abeele A-M, Bulpa P, Misset B, Meersseman W, Cardoso T, et al. Epidemiology of invasive aspergillosis in critically ill patients: clinical presentation, underlying conditions, and outcomes. *Crit Care*. 2015;19:7.
- Schauwvlieghe AFAD, Rijnders BJA, Philips N, Verwijs R, Vanderbeke L, Van Tienen C, et al. Invasive aspergillosis in patients admitted to the intensive care unit with severe influenza: a retrospective cohort study. *Lancet Respir Med*. 2018;6:782–92.
- Koehler P, Bassetti M, Chakrabarti A, Chen SCA, Colombo AL, Hoenigl M, et al. Defining and managing COVID-19-associated pulmonary aspergillosis: the 2020 ECMM/ISHAM consensus criteria for research and clinical guidance. *Lancet Infect Dis*. 2021;21:e149–62.
- Dellière S, Dudoignon E, Fodil S, Voicu S, Collet M, Ouilic P-A, et al. Risk factors associated with COVID-19-associated pulmonary aspergillosis in ICU patients: a French multicentric retrospective cohort. *Clin Microbiol Infect*. 2020;27. Available from: <http://www.ncbi.nlm.nih.gov/pubmed/33316401>
- Fekkar A, Lampros A, Mayaux J, Poignon C, Demeret S, Constantin J-M, et al. Occurrence of invasive pulmonary fungal infections in patients with severe COVID-19 admitted to the ICU. *Am J Respir Crit Care Med*. 2021;203:307–17. <https://doi.org/10.1164/rccm.202009-3400OC>.
- Prattes J, Wauters J, Giacobbe DR, Salmanton-García J, Maertens J, Bourgeois M, et al. Risk factors and outcome of pulmonary aspergillosis in critically ill coronavirus disease 2019 patients-a multinational observational study by the European Confederation of Medical Mycology. *Clin Microbiol Infect*. 2021. <http://www.ncbi.nlm.nih.gov/pubmed/34454093>

12. Prattes J, Wauters J, Giacobbe DR, Lagrou K, Hoenigl M, ECMM-CAPA Study Group. Diagnosis and treatment of COVID-19 associated pulmonary aspergillosis in critically ill patients: results from a European confederation of medical mycology registry. *Intensive Care Med.* 2021. <http://www.ncbi.nlm.nih.gov/pubmed/34269853>
13. Bartoletti M, Pascale R, Cricca M, Rinaldi M, Maccaro A, Bussini L, et al. Epidemiology of invasive pulmonary aspergillosis among COVID-19 intubated patients: a prospective study. *Clin Infect Dis.* 2020. <http://www.ncbi.nlm.nih.gov/pubmed/32719848>
14. Permpalung N, Chiang TP-Y, Massie AB, Zhang SX, Avery RK, Nematollahi S, et al. COVID-19 associated pulmonary aspergillosis in mechanically ventilated patients. *Clin Infect Dis.* 2021. <http://www.ncbi.nlm.nih.gov/pubmed/33693551>
15. Salmanton-García J, Sprute R, Stemler J, Bartoletti M, Dupont D, Valerio M, et al. COVID-19-associated pulmonary aspergillosis, March–August 2020. *Emerg Infect Dis.* 2021;27:1077–86.
16. Gangneux jp, Dannaoui E FA. Fungal infections in mechanically ventilated COVID-19 patients in the ICU during the 1 first wave: the French multicenter MYCOVID study. *Lancet Respir Med.* 2021 (**in press**).
17. Janssen NAF, Nyga R, Vanderbeke L, Jacobs C, Ergün M, Buil JB, et al. Multinational observational cohort study of COVID-19-associated pulmonary aspergillosis. *Emerg Infect Dis.* 2021;27:2892–8.
18. Razazi K, Arrestier R, Haudebourg AF, Benelli B, Carreaux G, Decousser J, et al. Risks of ventilator-associated pneumonia and invasive pulmonary aspergillosis in patients with viral acute respiratory distress syndrome related or not to Coronavirus 19 disease. *Crit Care [Internet]. BioMed Central;* 2020 [cited 2021 Jan 22];24:699. <https://ccforum.biomedcentral.com/articles/https://doi.org/10.1186/s13054-020-03417-0>
19. Verweij PE, Rijnders BJA, Brüggemann RJM, Azoulay E, Bassetti M, Blot S, et al. Review of influenza-associated pulmonary aspergillosis in ICU patients and proposal for a case definition: an expert opinion. *Intensive Care Med.* 2020;46:1524–35.
20. Rouzé A, Martin-Loeches I, Povoia P, Makris D, Artigas A, Bouchereau M, et al. Relationship between SARS-CoV-2 infection and the incidence of ventilator-associated lower respiratory tract infections: a European multicenter cohort study. *Intensive Care Med.* 2021. <http://www.ncbi.nlm.nih.gov/pubmed/33388794>
21. Blot SI, Taccone FS, Van den Abeele A-M, Bulpa P, Meersseman W, Brusselsaers N, et al. A clinical algorithm to diagnose invasive pulmonary aspergillosis in critically ill patients. *Am J Respir Crit Care Med.* 2012;186:56–64.
22. Prentice RL, Kalbfleisch JD, Peterson AV, Flournoy N, Farewell VT, Breslow NE. The analysis of failure times in the presence of competing risks. *Biometrics.* 1978;34:541–54.
23. Verweij PE, Brüggemann RJM, Azoulay E, Bassetti M, Blot S, Buil JB, et al. Taskforce report on the diagnosis and clinical management of COVID-19 associated pulmonary aspergillosis. *Intensive Care Med.* 2021;47:819–34.
24. Therneau T-M, Grambsch P-M. Modeling survival data: extending the cox model. New-York (2000).
25. Coste A, Frérou A, Raute A, Couturaud F, Morin J, Egretre P-Y, et al. The extent of aspergillosis in critically ill patients with severe influenza pneumonia: a multicenter cohort study. *Crit Care Med.* 2021;49:934–42.
26. van de Veerdonk FL, Brüggemann RJM, Vos S, De Hertogh G, Wauters J, Reijers MHE, et al. COVID-19-associated Aspergillus tracheobronchitis: the interplay between viral tropism, host defence, and fungal invasion. *Lancet Respir Med.* 2021; 9:795–802.
27. Ackermann M, Verleden SE, Kuehnel M, Haverich A, Welte T, Laenger F, et al. Pulmonary vascular endothelialitis, thrombosis, and angiogenesis in Covid-19. *N Engl J Med.* 2020; 383:120–8.

Publisher's Note

Springer Nature remains neutral with regard to jurisdictional claims in published maps and institutional affiliations.

Ready to submit your research? Choose BMC and benefit from:

- fast, convenient online submission
- thorough peer review by experienced researchers in your field
- rapid publication on acceptance
- support for research data, including large and complex data types
- gold Open Access which fosters wider collaboration and increased citations
- maximum visibility for your research: over 100M website views per year

At BMC, research is always in progress.

Learn more biomedcentral.com/submissions

