



**HAL**  
open science

## The maize low-lignin mutant F2bm3 shows pleiotropic effects on photosynthetic and cell wall metabolisms in response to chilling

Catalina Duran Garzon, Michelle Lequart, Léo Bellenger, Alejandro Lovo, Françoise Fournet, Solène Bassard, Hélène Sellier-Richard, Paulo Marcelo, Karine Pageau, Catherine Giauffret, et al.

### ► To cite this version:

Catalina Duran Garzon, Michelle Lequart, Léo Bellenger, Alejandro Lovo, Françoise Fournet, et al.. The maize low-lignin mutant F2bm3 shows pleiotropic effects on photosynthetic and cell wall metabolisms in response to chilling. cell wall meeting, 2019, Cambridge, United Kingdom. hal-04454441

**HAL Id: hal-04454441**

**<https://u-picardie.hal.science/hal-04454441>**

Submitted on 13 Feb 2024

**HAL** is a multi-disciplinary open access archive for the deposit and dissemination of scientific research documents, whether they are published or not. The documents may come from teaching and research institutions in France or abroad, or from public or private research centers.

L'archive ouverte pluridisciplinaire **HAL**, est destinée au dépôt et à la diffusion de documents scientifiques de niveau recherche, publiés ou non, émanant des établissements d'enseignement et de recherche français ou étrangers, des laboratoires publics ou privés.



Distributed under a Creative Commons Attribution 4.0 International License

# The maize low-lignin mutant *F2bm3* shows pleiotropic effects on photosynthetic and cell wall metabolisms in response to chilling

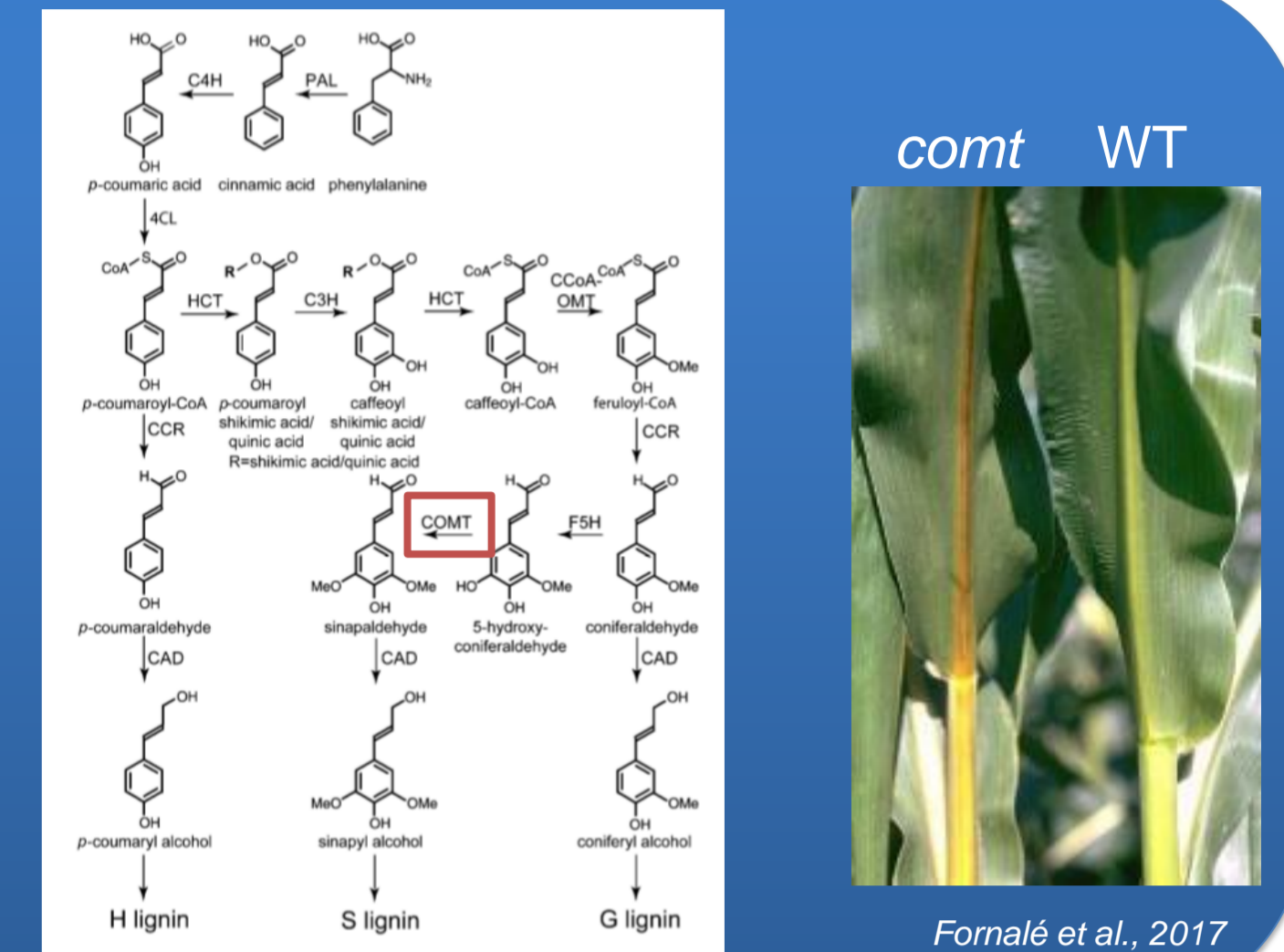
Catalina Duran Garzon<sup>1</sup>, Michelle Lequart<sup>1</sup>, Léo Bellenger<sup>1</sup>, Alejandro Lovo<sup>5</sup>, Françoise Fournet<sup>1</sup>, Solène Bassard<sup>1</sup>, Hélène Sellier-Richard<sup>2</sup>, Paulo Marcelo<sup>3</sup>, Karine Pageau<sup>1</sup>, Catherine Giauffret<sup>4</sup>, Wilfred Vermeris<sup>5</sup>, Jean-Marc Domon<sup>1</sup>, Catherine Rayon<sup>1</sup>

<sup>1</sup>EA3900-BIOPI, Biologie des Plantes et Innovation, Université de Picardie Jules Verne, 80039, Amiens, France ; <sup>2</sup>Unité Expérimentale Grandes Cultures Innovation et Environnement, INRA-Estrées-Mons, 80203 Péronne, France; <sup>3</sup>Plateforme d'Ingénierie Cellulaire & Analyses des Protéines ICAP Université de Picardie Jules Verne, 80039 Amiens, France; <sup>4</sup>UR AgrolImpact, INRA, Estrées-Mons, 80203 Péronne, France ; <sup>5</sup> Department of Microbiology & Cell Science, University of Florida, Gainesville, FL 32610, USA .

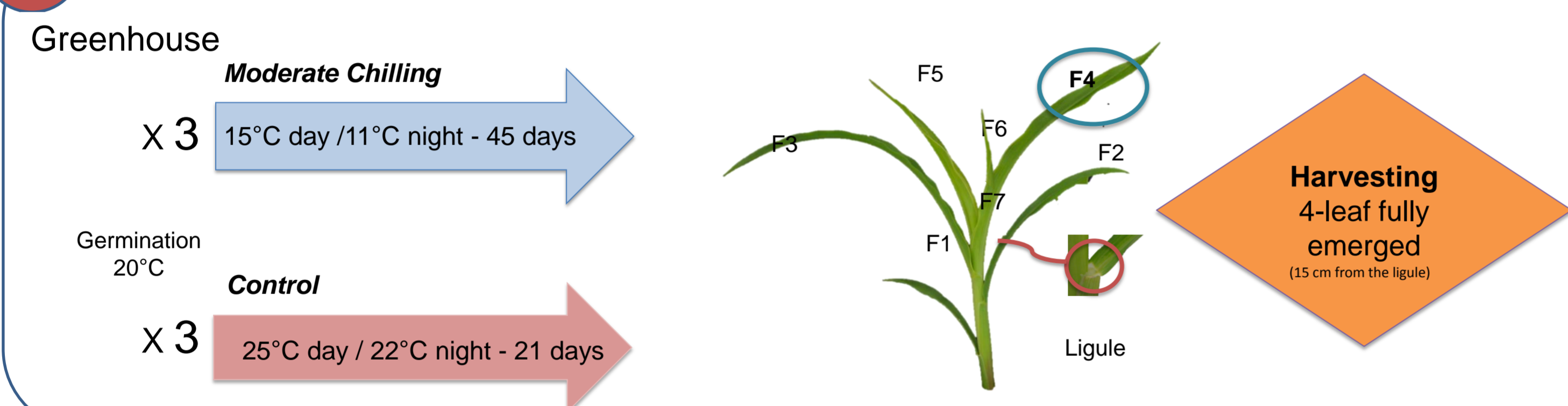
## Introduction

Maize (*Zea mays* L.) is one of the major crops in the world and is highly sensitive to low temperature due to its tropical origin. Chilling may particularly affect maize during early seedling growth by altering physiological processes including photosynthesis and cell wall properties, leading to biomass reduction. Changes in photosynthetic and cell wall metabolisms were investigated during a long chilling exposure in a low-lignin maize mutant, *brown midrib3* (*bm3*), which contains a null-mutation in the gene encoding caffeic acid O-methyltransferase (*COMT*). Wild-type F2 plants and the near-isogenic *F2bm3* mutant were grown during 60 days with a day/night temperature regime of 15°C/11°C in a greenhouse. Photosynthetic pigments, cell wall sugars, lignin, cell wall bound hydroxycinnamic acids (HCA) contents were determined when the 4th leaf had fully emerged.

Does *COMT* mutation compensate or increase deleterious chilling effects on growth or development ?



## 1 Experimental growth conditions



## 4 Chlorophyll and zeaxanthin pigments are more abundant in *F2bm3* than in *F2* under chilling exposure

Some photosynthetic pigments content in *F2* and *F2bm3* leaves

Pigment	25°C/22°C		15°C/11°C		25°C/22°C		15°C/11°C	
	<i>F2</i>		<i>F2</i>		<i>F2bm3</i>		<i>F2bm3</i>	
	SD		SD		SD	SD		SD
Chl a (μmol.g <sup>-1</sup> FW)	2.77 ± 0.19	b	2.47 ± 0.13	b	6.23 ± 0.12	a	5.95 ± 0.16	a
Chl b (μmol.g <sup>-1</sup> FW)	0.78 ± 0.11	b	0.74 ± 0.12	b	0.93 ± 0.05	a	0.67 ± 0.10	b
Chl a+b (μmol.g <sup>-1</sup> FW)	3.55 ± 0.30	b	3.21 ± 0.13	b	7.16 ± 0.14	a	6.62 ± 0.22	a
Chl a/b	3.58 ± 0.29	c	3.41 ± 0.73	c	6.72 ± 0.38	b	9.04 ± 1.19	a
Zeaxanthin (μmol.g <sup>-1</sup> FW)	0.003 ± 0.000	c	0.015 ± 0.002	b	0.002 ± 0.001	c	0.070 ± 0.001	a
Carotenoid / Chl a+b	0.56 ± 0.05	a	0.60 ± 0.10	a	0.25 ± 0.02	b	0.24 ± 0.02	b

Data are means ±SD (n=16). Differences were statistically analyzed using Student's t-test. Different letters indicate significant differences between groups (P < 0.05).

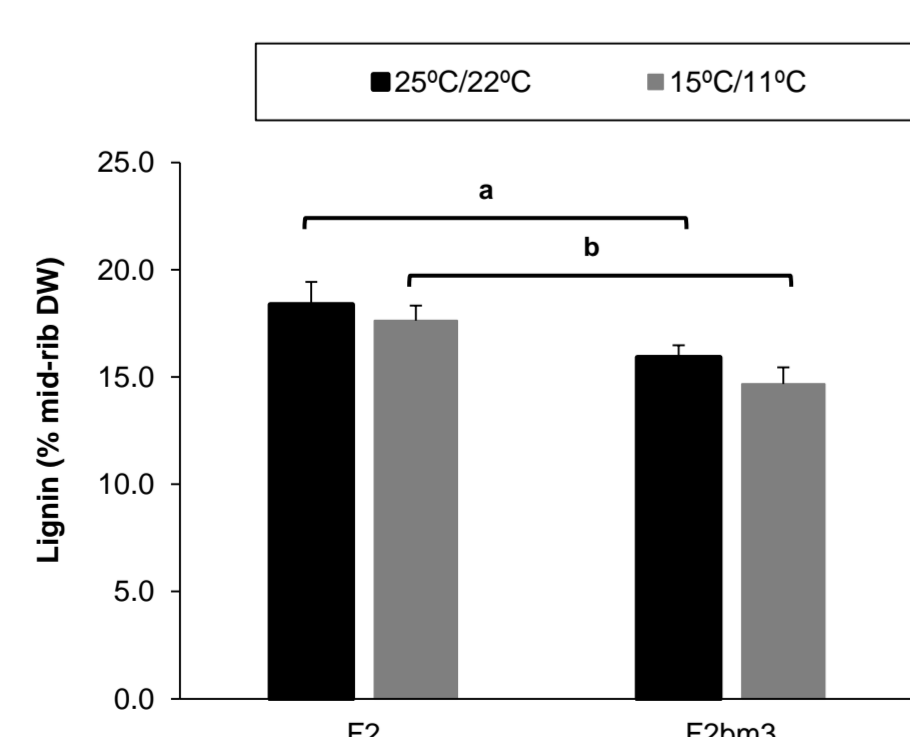
## 6 Chilling increases hydroxycinnamic acids in *F2bm3*

Cell wall hydroxycinnamates content in *F2* and *F2bm3* leaves

Genotype	25°C/22°C		15°C/11°C		25°C/22°C		15°C/11°C	
	<i>F2</i>		<i>F2</i>		<i>F2bm3</i>		<i>F2bm3</i>	
	SD		SD		SD	SD		SD
FA (Ester) (mg.g <sup>-1</sup> DW)	0.13 ± 0.07	b	0.36 ± 0.09	a	0.24 ± 0.13	b	0.41 ± 0.05	a
FA ester / Ara	9.63 ± 5.86	a	12.89 ± 1.47	a	15.18 ± 8.53	a	14.93 ± 0.84	a
FA (Ether) (mg.g <sup>-1</sup> DW)	0.14 ± 0.05	b	0.13 ± 0.04	b	0.18 ± 0.02	b	0.28 ± 0.08	a
TOTAL FA (mg.g <sup>-1</sup> DW)	0.27 ± 0.12	b	0.49 ± 0.08	b	0.41 ± 0.13	b	0.70 ± 0.10	a
pCA (Ester) (mg.g <sup>-1</sup> DW)	0.66 ± 0.09	a	0.36 ± 0.03	b	0.34 ± 0.06	b	0.40 ± 0.08	b
pCA (Ether) (mg.g <sup>-1</sup> DW)	0.48 ± 0.06	a	0.25 ± 0.15	b	0.26 ± 0.03	b	0.23 ± 0.06	b
TOTAL pCA (mg.g <sup>-1</sup> DW)	1.14 ± 0.11	a	0.60 ± 0.37	b	0.60 ± 0.08	b	0.63 ± 0.13	b
TOTAL FA + pCA (mg.g <sup>-1</sup> DW)	1.43 ± 0.21	a	1.09 ± 0.45	b	1.02 ± 0.21	b	1.32 ± 0.23	a
pCA/FA	4.88 ± 2.45	a	1.18 ± 0.59	b	1.60 ± 0.65	b	0.92 ± 0.28	b

Data are means ±SD (n=16). Differences were statistically analyzed using Student's t-test. Different letters indicate significant differences between groups (P < 0.05). ferulic acid (FA), p-coumaric acid (pCA), arabinose (Ara).

## 7 Chilling does not change lignin content but H-residues increases while a reduction in S- and G-units is observed in *F2bm3*



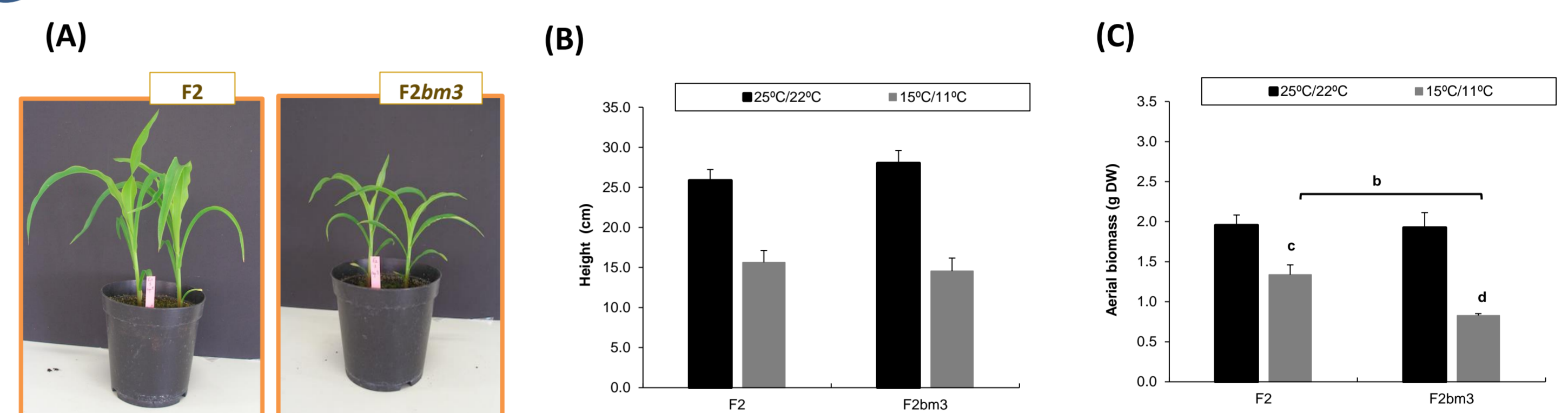
Lignin content using acetyl bromide method

Data are means ±SD (n=16). Differences were statistically analyzed using Student's t-test. Letters denote differences at P<0.05, a between F2 and F2bm3 with a day/night temperature regime of 25°C/22°C, b between F2 and F2bm3 with a day/night temperature regime of 15°C/11°C, c and d between temperatures for each genotype. Black columns represents the experiment under ambient temperature condition and grey columns under chilling exposure.

Identification of H, S and G phenylpropanoid units (%) by thioacydolyis in *F2* and *F2bm3* leaves.

Genotype	25°C/22°C		15°C/11°C		Genotype	25°C/22°C		15°C/11°C	
	<i>F2</i>		<i>F2</i>			<i>F2bm3</i>		<i>F2bm3</i>	
	SD		SD		SD		SD	SD	
H	7.00 ± 0.06		2.00 ± 0.03		H	0.00 ± 0.00		14.00 ± 0.03	
G	64.00 ± 0.12		59.00 ± 0.02		G	82.00 ± 0.13		73.00 ± 0.07	
S	29.00 ± 0.06		39.00 ± 0.04		S	18.00 ± 0.13		13.00 ± 0.04	

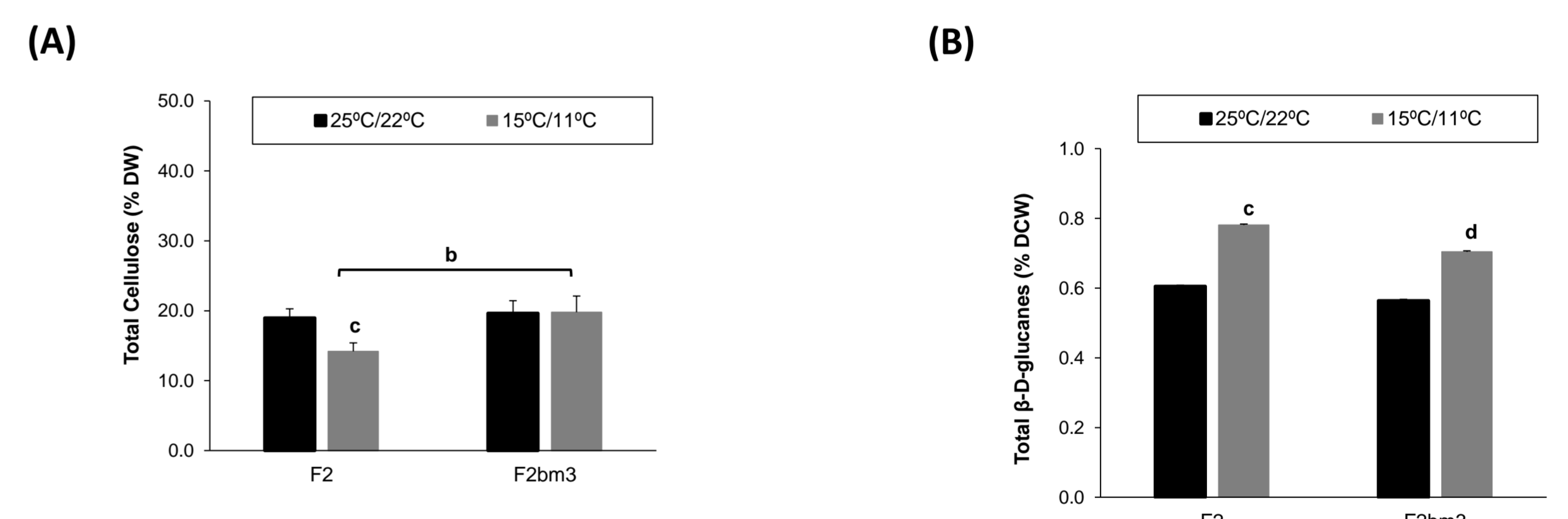
## 3 A long chilling treatment affects plant growth and development



Chilling effects on plant growth and biomass in the lignin maize deficient mutant *F2bm3* and the normal *F2* line. (A) Phenotype of *F2* and *F2bm3* after 45 days of chilling stress. (B) Plant height under ambient growth condition (black bar) and chilling stress (grey bar). (C) The average of aerial biomass (Dry Weight) after 45 days of chilling stress with a day/night temperature regime of 15°C/11°C.

Data are means ±SD (n=8). Differences were statistically analyzed using Student's t-test. Letters denote differences at P<0.05, a between *F2* and *F2bm3* at 25°C/22°C, b between *F2* and *F2bm3* at 15°C/11°C, c and d between temperatures for each genotype.

## 5 Chilling changes the cell wall sugars composition in both *F2* and *F2bm3* lines



(A) Cellulose and (B) (1→3),(1→4)-β-D-glucan content in *F2* and *F2bm3* leaves under ambient temperature (black bar) and chilling (grey bar).

Data are means ±SD (n=16). Differences were statistically analyzed using Student's t-test. Letters denote differences at P<0.05, a between *F2* and *F2bm3* with a day/night temperature regime of 25°C/22°C, b between *F2* and *F2bm3* with a day/night temperature regime of 15°C/11°C, c and d between temperatures for each genotype.

Non-cellulosic sugars content in *F2* and *F2bm3* leaves

Genotype	25°C/22°C		15°C/11°C		25°C/22°C		15°C/11°C	
	<i>F2</i>		<i>F2</i>		<i>F2bm3</i>		<i>F2bm3</i>	
Polysaccharide	% mole	SD	% mole	SD	% mole	SD	% mole	SD
Rha	0.73 ± 0.24	a	0.77 ± 0.32	a	0.71 ± 0.07	a	0.76 ± 0.43	a
Ara	14.68 ± 3.55	b	27.35 ± 4.30	a	15.77 ± 1.09	b	27.67 ± 3.78	a
Gal	2.84 ± 1.13	b	4.27 ± 1.28	a	3.15 ± 0.54	b	4.08 ± 1.02	a
Glc	12.00 ± 3.79	a	14.50 ± 2.59	a	10.94 ± 3.23	a	13.65 ± 2.50	a
GalUA	2.22 ± 0.46	a	3.07 ± 0.95	a	2.64 ± 0.47	a	2.85 ± 0.88	a
GlcUA	1.31 ± 0.20	a	1.42 ± 0.40	a	1.21 ± 0.21	a	1.39 ± 0.39	a
Xyl	66.23 ± 7.57	a	48.62 ± 7.09	b	65.57 ± 3.90	a	49.58 ± 7.18	b
Ara + Xyl	80.91 ± 4.88	a	75.97 ± 4.77	a	81.34 ± 3.71	a	77.25 ± 4.67	a
Ara / Xyl	0.23 ± 0.08	b	0.58 ± 0.17	a	0.24 ± 0.03	b	0.57 ± 0.13	a

Data are means ±SD (n=16). Differences were statistically analyzed using Student's t-test. Different letters indicate significant differences between groups (P < 0.05). Rhamnose (Rha), arabinose (Ara), galactose (Gal), glucose (Glc), galacturonic acid (GalUA), glucuronic acid (GlcUA), Xylose (Xyl).

## Conclusion

- The increase in arabinose substitution on the xylan backbone and the abundance of HCA in the *F2bm3* mutant could reinforce the cell wall and maintain the hydration status of the cell wall during chilling.
- The reduction in G-residues in *F2bm3* may be due to a greater demand in ferulic acids as photoprotectant under chilling.
- Therefore, the *F2bm3* displays photosynthesis and cell wall traits that might be useful to cope with early sowing stress.

