



HAL
open science

Roadside disturbance promotes plant communities with arbuscular mycorrhizal associations in mountain regions worldwide

Jan Clavel, Jonas Lembrechts, Jonathan Lenoir, Sylvia Haider, Keith Mcdougall, Martin Nuñez, Jake Alexander, Agustina Barros, Ann Milbau, Tim Seipel, et al.

► To cite this version:

Jan Clavel, Jonas Lembrechts, Jonathan Lenoir, Sylvia Haider, Keith Mcdougall, et al.. Roadside disturbance promotes plant communities with arbuscular mycorrhizal associations in mountain regions worldwide. *Ecography*, 2024, 2024 (7), pp.e07051. 10.1111/ecog.07051 . hal-04543510

HAL Id: hal-04543510

<https://u-picardie.hal.science/hal-04543510v1>

Submitted on 31 Oct 2024

HAL is a multi-disciplinary open access archive for the deposit and dissemination of scientific research documents, whether they are published or not. The documents may come from teaching and research institutions in France or abroad, or from public or private research centers.

L'archive ouverte pluridisciplinaire **HAL**, est destinée au dépôt et à la diffusion de documents scientifiques de niveau recherche, publiés ou non, émanant des établissements d'enseignement et de recherche français ou étrangers, des laboratoires publics ou privés.

Roadside disturbance promotes arbuscular mycorrhizal communities in mountain regions worldwide

Jan Clavel¹, Jonas Lembrechts¹, Jonathan Lenoir², Sylvia Haider³, Keith McDougall⁴, Martin Nuñez⁵, Jake Alexander⁶, Agustina Barros⁷, Ann Milbau⁸, Tim Seipel⁹, Anibal Pauchard¹⁰, Eduardo Fuentes-Lillo¹¹, Amanda Ratier Backes¹², Pervaiz Dar¹³, zafar reshi¹³, Alla Aleksanyan¹⁴, Shengwei Zong¹⁵, J. R. Arevalo¹⁶, Valeria Aschero⁷, Erik Verbruggen¹, and Ivan Nijs¹

¹University of Antwerp

²Université de Picardie Jules Verne

³Martin Luther University Halle Wittenberg

⁴La Trobe University

⁵University of Houston

⁶Universite de Lausanne

⁷CONICET Mendoza

⁸Climate Impacts Research Centre (CIRC)

⁹Montana State University

¹⁰Universidad de Concepcion

¹¹University of Concepción

¹²Martin-Luther-Universität Halle-Wittenberg

¹³University of Kashmir

¹⁴Institute of Botany National Academy of Sciences of the Republic of Armenia

¹⁵Northeast Normal University

¹⁶Universidad de La Laguna

August 12, 2023

Abstract

Aim: We aimed to assess the impact at the global level of physical anthropogenic disturbances on the dominant mycorrhizal types in ecosystems and how this mechanism can potentially lead to lasting plant community changes. **Location:** Globally distributed study regions **Time Period:** 2007-2018 **Taxa studied:** Plants and mycorrhizal fungi **Methods:** We used a database of coordinated plant community surveys following mountain roads from 894 plots in 11 mountain regions across the globe in combination with a database of mycorrhizal-plant associations in order to estimate the relative abundance of mycorrhizal types in natural and disturbed environments. **Results:** Our findings show that roadside disturbance promotes the cover of plants associated with arbuscular mycorrhizal (AM) fungi. This effect is especially strong in colder mountain environments and in mountain regions where plant communities are dominated by ectomycorrhizal (EcM) or ericoid-mycorrhizal (ErM) associations. Furthermore, non-native plant species, which we confirmed to be mostly AM plants, are more successful in environments dominated by AM associations. **Main Conclusions:** These biogeographical patterns suggest that changes in mycorrhizal types are a crucial factor in the worldwide impact of anthropogenic disturbances on mountain ecosystems by promoting AM-dominated systems and potentially weakening biotic resistance against non-native species invasion. Restoration efforts in mountain ecosystems will have to contend with changes in the fundamental make-up of EcM- and ErM plant communities induced by roadside

disturbance.

Introduction

Mycorrhizal associations are found in the majority of terrestrial plants (Kivlin, Hawkes, and Treseder 2011; Wang and Qiu 2006) and are increasingly seen as fundamental drivers of plant community composition and ecosystem functioning (Klironomos et al. 2011; Neuenkamp et al. 2018; Wagg et al. 2014). Different mycorrhizal types have in general different nutrient provision traits: arbuscular mycorrhizas (AM) are usually more important in the uptake of inorganic nutrients, thereby improving nutrient and carbon cycling (Phillips, Brzostek, and Midgley 2013), whereas many ectomycorrhizas (EcM) and ericoid mycorrhizas (ErM) can directly free up nutrients locked up in organic matter (Read, Leake, and Perez-moreno 2004; Sulman et al. 2017). Therefore, different ecosystems are dominated by different mycorrhizal types. The dominance of a certain mycorrhizal strategy is determined both by environmental conditions and by mycorrhiza-mediated feedbacks, implying that even relatively minor disturbances could cause lasting changes in mycorrhizal communities (Averill et al. 2022; Carteron, Vellend, and Laliberté 2022). Existing studies in natural (Clavel et al. 2020; Gerz et al. 2019) and agricultural settings (van der Heyde et al. 2017; Schnoor et al. 2011) show a range of responses of mycorrhizal communities to different types of anthropogenic disturbances. However, these studies remain limited to local scales, and all took place in Europe or North America, and thus generalizing their results remains challenging (Öpik et al. 2010; Soudzilovskaia et al. 2017). Here, we explore the impact of anthropogenic disturbances on the dominant mycorrhizal types of mountain plant communities, using a global database from the Mountain Invasion Research Network (MIREN, www.mountaininvasions.org) (Haider et al. 2022).

The MIREN database consists of 2822 surveys of both native and non-native plant diversity and cover for 100 m² plots, both close to and away from 62 mountain roads covering 11 mountain ranges (Haider et al. 2022). Mountains are highly valuable ecosystems, being home to a disproportionately large share of global biodiversity (Rahbek et al. 2019) and providing crucial ecosystem services (Grêt-regamey, Hanna, and Gre 2021), that are under increasing pressures from anthropogenic disturbance (Dainese et al. 2017; Kohler et al. 2010). Mountain roads are ideal systems to study the impact of human-induced disturbances as they have a strong but locally limited effect on their surroundings (Müllerová, Vítková, and Vitek 2011; O’Farrell and Milton 2006; Pollnac et al. 2012) while covering large elevational, and consequently, large climatic gradients. The plant cover data from MIREN was combined with the FungalRoots database (Soudzilovskaia et al. 2020) to estimate the proportions of plant cover associated with each mycorrhizal type in disturbed roadsides and in the adjacent undisturbed vegetation.

Our expectation was that the disturbance caused by roads would cause a shift in types of mycorrhizal associations, as road disturbance is known to alter plant community composition (Lembrechts et al. 2016; McDougall et al. 2018). As roads tend to favour ruderal species, commonly AM or non-mycorrhizal (NM) plants, to the detriment of more perennial and woody plants, more likely to be associated with EcM and ErM fungi, we expected road disturbance to correlate with increased AM and NM representation and decreased EcM and ErM. As a result, the impact of roadsides on mycorrhizal dominance would be larger if the native vegetation is EcM or ErM-dominated, rather than AM-dominated.

As non-native plant species are typically AM or NM (Pringle et al. 2009) and non-native species are favored by disturbance, we hypothesized that high non-native plant species cover would be found in plots and regions with native communities dominated by AM- or NM-associated species. In turn, non-native species presence should be higher along roadsides.

More specifically, we tested the following hypotheses:

- 1) Road disturbance is associated with changes in the distribution of mycorrhizal types in mountain plant communities at the global scale.
- 2) The strength and direction of the disturbance effect on mycorrhizal type distribution depends on local environmental conditions and on the dominant mycorrhizal type of the region’s native community.

3) Non-native plant success is highest in AM- and NM-dominated communities and in plots affected by road disturbance.

Methods

MIREN dataset

Vegetation composition along mountain roads has been recorded by the MIREN network since 2007 across 18 mountain regions on 5 continents (Haider et al. 2022). For the current study we focused on eleven mountain regions, as the remaining seven did not offer plant cover data both along the roadside and in the neighboring natural vegetation at the time of analyses. These regions cover environmental gradients with elevations ranging from 0 to 4000 m above sea level (m a.s.l) and mean annual soil temperatures ranging from -5.8 to 27.9 °C. The studied mountain regions were: the Argentine Andes in Argentina; the Caucasus Mountains in Armenia; the Australian Alps in Australia; the Chilean Andes in Chile; the Changbai Mountains in China; the Himalayas in India; the Northern Scandes in Norway; Mount Teide in the Canary Islands (Spain); the European Alps in Switzerland; the Rocky Mountains in Montana (USA); the Blue Mountains in Oregon (USA). In each of these 11 regions, three roads which covered large elevational gradients, were accessible by the local research teams, were asphalted or covered by gravel, and were actively used by motorized traffic were selected. The surveyed road edges were typically highly disturbed, with shallow soils and often altered surface material due to the road construction, and reduced vegetation cover (Müllerová et al. 2011), see Figure S1 for examples. All surveys were first executed between 2007 and 2018, depending on the region. Surveys are repeated every 5 years, resulting in currently one (two regions), two (five regions) or three (four regions) repeated surveys depending on the region.

Sampling design

Twenty transects were set up along each road at approximately equal elevational steps following the MIREN protocol (see Haider et al. 2022 for the published version of the protocol). Each of these transect was then divided in three 2 m x 50 m plots organized in a T-shape. The first plot was laid out parallel to the road, encompassing the vegetation directly impacted by the road-associated disturbance, and both the second and third plots were set up perpendicular to the road, respectively from 2 to 52 m and from 52 m to 102 m, covering the less disturbed vegetation communities adjacent to the road. Henceforth, we will refer to these plots as “roadside plots” and “adjacent plots”. While anthropogenic disturbance was almost always higher in the roadside plot, some of the adjacent plots were also subject to anthropogenic disturbances, especially so at lower elevations. The presence and total cover of all vascular plant species present in each plot were then visually estimated and classified using the following semi-continuous scale: 1 = <1%; 2 = 1 to 5%; 3 = 5 to 25%; 4 = 25 to 50%; 5 = 50 to 75%; 6 = 75 to 95%; and 7 = 95–100%. Plant species were also categorized as either native or non-native following local and regional floras, with species introduced in the country or mountain region after AD 1500 considered to be non-native (Haider et al., 2022). Additionally, average yearly soil temperature was extracted from the SoilTemp global maps of soil temperature at a 1 km resolution (Lembrechts et al. 2022). In total, our dataset included 894 plots spread out across 62 separate mountain roads and 11 regions.

Mycorrhizal type

Using the FungalRoot database (Soudzilovskaia et al. 2020), plant species were grouped according to their mycorrhizal types: arbuscular mycorrhizal (AM); ericoid mycorrhizal (ErM); ecto-mycorrhizal (EcM); orchid mycorrhizal (OM); or non-mycorrhizal (NM). Scores of 0, 0.5 or 1 were attributed to each plant species for each mycorrhizal type, depending on whether they were recorded as either associating (1) or not (0) with a certain mycorrhizal type, or associating with two different types (0.5) (e.g., AM and NM; there were no species associated with more than two types). We included plant species which were referred to in the FungalRoot database as “AM, others not addressed” and “EcM, other not addressed” simply as “AM” and “EcM”, respectively. Indeed, this statement means that they were confirmed to associate with the respective mycorrhizal type, but that uncertainty remained regarding their potential to form associations with more than one mycorrhizal type. The potential resulting error is minimal, however, as amongst all the species

for which mycorrhizal types were assessed, only 0.3% were found to associate with more than one type of mycorrhizal fungi, indicating that such instances of multiple associations are negligibly rare.

We could extract mycorrhizal types at the plant species level for 65.0 % of all observations, ranging from a minimum of 30.2% in Argentina to a maximum of 93.2% in Norway. For the remaining species the dominant mycorrhizal type at the genus level was used instead, resulting in 98.4 % of all observations being assigned a mycorrhizal type, ranging from a minimum of 94.2% in Argentina to a maximum of 99.8% in India. This categorization by genus was done by Soudzilovskaia et al., 2020, who assigned a mycorrhizal type or NM status to a genus if more than 2/3 of the available observations in that genus converged.

We multiplied the cover percentage for each species in a plot by its score for each mycorrhizal type (0, 0.5 or 1). The resulting percentages of total vegetation cover were added up for each mycorrhizal type and then divided by the total vegetation cover of the plot obtained by adding up the cover values of all species present. This resulted in a percentage of total plot vegetation cover associated with each mycorrhizal type (for example: 65% of all vegetation in a plot is associated with AM fungi) which was then converted to proportions between 0 and 1 for further analysis; this value is henceforth referred to as ‘mycorrhizal type cover’. It is worth noting that this value is a percentage of a plot total vegetation cover and not of the plot total surface. OM mycorrhizal type cover was excluded from further analysis as it represented less than 0.1% of total cover so it is unlikely to be relevant when looking at changes in mycorrhizal type distribution.

Statistical analysis

We fitted generalized linear mixed-effects models (GLMMs) for each mycorrhizal type to test for the effects of road disturbance (hypothesis 1), temperature and elevation, and their interactions with road disturbance (hypothesis 2) on the respective mycorrhizal type covers (2822 data points from 894 individual plots). We used beta regressions with the `glmmTMB` package (Brooks et al. 2017) in R (R Core Team 2021) after transformation of the response variable (i.e. proportion data) to avoid extreme values of 0 and 1: (response variable value * (number of observations - 1) + 0.5) / number of observations (Cribari-Neto and Zeileis 2010). The explanatory variables used were: (i) distance to the road as a proxy for disturbance, as a three-level factor for each plot (0 to 2 m from the road, 2 to 52 m from the road and 52 to a 102 m from the road); (ii) mean annual soil temperature; (iii) elevation; as well as (iv) the two-way interactions between these two factors. The elevation values used were relative to each region’s elevation gradient obtained by scaling elevation individually for each region using the scale function in base R (Becker 2021) resulting in gradients between -1 and 1 for all regions, with the lowest elevation of each gradient being the valley where the roads start, i.e. the point at which the elevation gradient starts and not sea level. We chose this because we were interested in the elevational distance relative to the bottom of the gradient and not in the absolute elevation of a region, as the latter is not easily comparable. The initial model contained both elevation and temperature, as elevation can serve as a measure of non-climate driven and more local gradients while temperature takes into account the differences between regions as well as large-scale climate-driven trends within a region. However, after testing for multicollinearity using the VIF (Variable Inflation Factor) through the `vif` function in R (Fox and Weisberg 2018), elevation and temperature were found to be too strongly correlated (VIF value of 5.812 for elevation). We consequently omitted the effect of elevation from the final model. However, to make sure that temperature and elevation patterns did indeed behave similarly we also ran the model selection strategy in parallel with elevation instead of temperature. The random intercept term of transect nested in road nested in region was added to consider the hierarchical nature of our design, as well as a random intercept term for year of observation to consider repeated surveys, and a random slope term for plots. Candidate models with all possible combinations of fixed effects were then derived from the complete model and compared using AICc (Akaike Information Criterion, corrected for small sample sizes). Only models with a Δ AICc of less than 2 units compared to the best candidate model were retained (Zuur et al. 2009). We then applied a variation partitioning approach to the selected models using the performance package in R to determine the proportion of variation in mycorrhizal type proportions explained by disturbance, mean annual soil temperature and elevation (Lüdecke et al. 2021).

To investigate the variation between regions, we used a partial pooling approach (Harrison et al. 2018). This

was done using models derived from the aforementioned beta regressions for each mycorrhizal types with the same explanatory variables that were retained after model selection, i.e. temperature and disturbance, but with additional random slope terms for both of these terms. The addition of these random effect allows for the intercept and slope associated with each region and each variable to deviate while still capturing the overall trends from the larger dataset. We then extracted the coefficients associated with each variable for every region, allowing for comparisons of trends between these regions and the global models.

A similar modeling approach was then used to investigate how the proportion of plants associated with the different mycorrhizal types correlated with the proportion of non-native plant cover (hypothesis 3). We ran separate tests for the percentage of total non-native plant cover in the roadside plots (0-2 m from the road) and in the neighboring vegetation in the furthest adjacent plots (52-102 m from the road). The 2-52 m plots were left out for this particular analysis, because we know from previous studies (Clavel et al., 2020; McDougall et al., 2018) that using the 2-52 m adjacent plot could be misleading for non-native species as it in some cases still included roadside vegetation when the roadside was more than 2 m wide. As the presence of non-native species is linked to changes in the local balance of mycorrhizal association types, we used the percentage cover of vegetation associated to each given mycorrhizal type amongst native species only as a predictor instead of the proportion of total vegetation cover. The models included native cover percentage of a certain mycorrhizal type and mean annual soil temperature as well as their interaction as explanatory variables and either roadside plot or adjacent plot non-native plant cover percentage as a response variable in order to distinguish between non-native species simply benefitting from the road disturbance and more established non-native species present in the surrounding vegetation. As previously, a random intercept of road nested into region was included to account for the survey’s hierarchical design. Model selection was then performed by comparing AICc values as described above.

Results

Global patterns in mycorrhizal types

Over the whole dataset, AM plants accounted for 71.3% of all plant species with an assigned mycorrhizal association, EcM plants accounted for 7.0%, ErM for 4.2%, NM for 15.8% and Orchid Mycorrhizas (OM) for 0.1%. These numbers are similar to the proportions per mycorrhizal type found by Soudzilovskaia et al., 2020 across the entire FungalRoot database (AM: 70%, EcM: 8%, ErM: 2%, OM: 1%, NM: 17%). The distribution of mycorrhizal types amongst native species in our data was likewise broadly similar to that of the FungalRoot database (AM: 79.3%, EcM: 6%, ErM: 3%, OM: 0.6%, NM: 10.3%). As expected, the majority of non-native species were found to associate with AM or to be non-mycorrhizal (AM: 85.6%, EcM: 0.3%, ErM: 0%, OM: 0%, NM: 14.1%). Mycorrhizal type distribution also varied with region (Fig. 1): AM plant species made up more than half of all vegetation in almost all regions except for Norway, where ErM vegetation was dominant. In Argentina, Armenia, Chile and India there was no or almost no EcM and ErM vegetation, with all plants being either AM or NM.

Globally, our models showed that both EcM and ErM vegetation cover decreased with increasing mean annual soil temperatures, while AM and NM vegetation cover increased (Table 1). This effect of temperature on EcM and ErM vegetation remained mostly consistent across regions while there was a high variability of responses for AM and NM vegetation (Table 2).

Impact of mountain roads on mycorrhizal types

At the global scale, the percentage of vegetation cover associated with AM fungi was higher on average in plots following the roadsides (roadside plots) than in the adjacent plots away from the roadside (adjacent plots) (Table 1, Fig. 2). Conversely, the proportion of EcM and ErM vegetation cover was lower on average in the roadside plots. In general, the proportion of EcM and ErM vegetation cover behaved in an opposite manner to that of AM plant cover where increased levels of AM vegetation cover corresponded to decreased levels of EcM and ErM vegetation cover and vice-versa. NM vegetation cover did not significantly differ between the two environments (Table 1). All the patterns we describe regarding soil temperature remained the same when using elevation instead as the environmental explanatory variable (Table S1).

Influence of the climate gradient

The aforementioned effect of disturbance on mycorrhizal type distribution was strongest in plots with low mean annual soil temperature as shown in Figure 2 and as indicated by a positive interaction between disturbance and temperature (Table 1). While the percentage of AM vegetation cover was on average higher in roadsides, this pattern tended to be reversed at the upper ranges of the regional temperature gradients where the percentage of AM vegetation cover in high temperature plots was lower in the roadside when compared to the adjacent vegetation, with NM vegetation instead being higher in these roadside plots. This effect was less clear at the inter-regional level: while the effect on disturbance was mostly higher in cold regions compared to warmer regions, both Australia and especially Tenerife where outliers with comparatively high average temperatures as well as a strong effect of road disturbance on the proportion of mycorrhizal association types observed in the vegetation (Fig. 2, Table 3).

Overall, disturbance had larger and more consistent effects on the proportion of mycorrhizal association types than elevation or temperature. Using variation partitioning, we found that disturbance explained 9.8% of the total variation in AM vegetation cover and mean annual soil temperature 4.0%. For EcM, these numbers were 2.8% for disturbance and 2.2% for temperature, for ErM these were 21.6% against 7.9% respectively, and 1.0% against 0.6% for NM. Again, we found similar results when replacing mean annual soil temperature with elevation as the environmental explanatory variable: 8.9% for disturbance and 1.2% for elevation in AM vegetation and respectively 2.7% and 1.9% for EcM, 15.3% and 1.3% for ErM, 3.0% and 1.9% for NM. The direction of the temperature effect on the proportion of mycorrhizal association types also greatly varied across regions for all mycorrhizal types except ErM, while the disturbance effect was consistent in its direction across all regions for all four mycorrhizal types (Table 2).

Influence of regionally dominant mycorrhizal type

In spite of the wide variation in ecosystems, all 8 regions where EcM and ErM associations occurred (all except India, Argentina and Chile) showed the pattern of increased AM vegetation cover and decreased EcM and ErM vegetation cover in roadside plots (Table 2). Importantly, however, the difference in proportion of mycorrhizal-type associations between the vegetation of the roadside plots and that of the adjacent plots was larger in plots (and regions) where AM plant species had a lower representation in the native natural vegetation (Fig. 3). In general, the lower the percentage cover of AM-dominated species in the natural vegetation, the higher the increase in AM-dominated species in the roadside plot (Fig. 1, as indicated by a flatter line above the 1:1 in Fig. 3). This effect mirrored the pattern we described for soil temperature, in plots for which the natural vegetation was in the upper range of AM vegetation cover we did observe a reversal of the general pattern: AM vegetation cover was lower in the roadside when compared to the adjacent vegetation with the vegetation being more NM instead (Fig. 3, regression line crossing the 1:1-line).

Non-native species

The proportion of mycorrhizal association types amongst the native vegetation was significantly correlated with the proportion of non-native species in the total vegetation cover, both in the roadside plots (Fig. 4, Table 3) and in the adjacent plots (Fig. S2, Table 3). Coincident with the AM or NM status of almost all non-native species, we observed that higher proportions of AM and NM native plant cover correlated with higher proportion of non-native cover both in the roadside plots (Fig. 4) and in the adjacent plots (Fig. S2). The opposite pattern was true for EcM and ErM vegetation cover. Elevation was as expected also strongly correlated with non-native plant cover, with higher elevation plots being on average less colonized by non-native plant species.

Discussion

On average, roadsides harbored an increased share of AM plant species in the total vegetation cover and a decreased share of EcM and ErM vegetation (Fig. 2). This mostly followed our initial expectations as road conditions and management are known to be detrimental to the more perennial and often tall and/or woody vegetations types that commonly associate with EcM and ErM fungi, while more ruderal and opportunist

plant species are most often AM and tend to be more successful in these environments (Müllerová et al. 2011; Smith and Read 2010). These differences were especially true in colder environments, i.e. at high elevations and high latitudes, but were less pronounced or even reversed at the upper end of the temperature gradient where roadside vegetation showed lower AM vegetation cover than in the adjacent vegetation.

However, despite these intra-regional fluctuations, we did observe that for almost all regions the effect of disturbance on the regional scale followed the global trend of increased AM vegetation along roadsides coupled with decreased ErM and EcM vegetation (when present; Table 2). Only Argentina was an exception as we found no correlation between road disturbance and changes in mycorrhizal type, which was not the case in other regions where the vegetation entirely or almost entirely AM associated or NM. These findings suggests that the impact of mountain road disturbance on mycorrhizal type distribution follows a systematic pattern that can be influenced, but is mostly not overruled by, local factors. As we observed in a recent study in the northern Scandes (Clavel et al. 2020), this change in AM vegetation cover is likely also reflected in the prevalence of the AM fungi themselves, as disturbance in these cold-climate mountains strongly promoted both the colonization of roots by arbuscular mycorrhizas as well as overall AM fungal diversity.

While largely constant in its direction, the strength of the roadside disturbance effect on mycorrhizal types varied between regions (Table 2, Fig. 2, Fig. 3) as it was lowest, but still present, in regions already dominated by AM and NM plants, and in warmer regions. This was most obvious in the three regions where EcM and ErM vegetation was entirely absent (Argentina, Chile and India) as could be expected since there is less margin for increases in AM vegetation cover when they already dominate the regional vegetation. Conversely, the regions with large proportions of EcM- and ErM vegetation cover, such as Norway or Tenerife, exhibited the largest differences in mycorrhizal associations between the vegetation of the roadside and of the adjacent plots (Fig. 3). In a similar fashion the effect of road disturbance on mycorrhizal type distribution was on average strongest in plots with lower average soil temperature, which is to be expected as EcM and ErM plant species are more common in colder conditions (Brundrett and Tedersoo 2018). However, this pattern was less clear at a regional level with examples of warmer regions such as Tenerife and colder regions such as China not following the global pattern (Fig. 2). Despite these region-specific patterns, disturbance was overall the strongest predictor of mycorrhizal proportion, above elevation and temperature, and this for all mycorrhizal types. This confirms, at the global level, findings from previous regional studies showing that local anthropogenic disturbance predicts plant species composition better than macro-environmental drivers (Fuentes-lillo et al. 2021; Lembrechts et al. 2016). The distribution patterns of the different mycorrhizal types that we observed across our sites was overall consistent with those previously reported in the scientific literature across climate and elevation gradients (Barcelo et al. 2019; Soudzilovskaia et al. 2017).

The aforementioned relationship between disturbance and the different mycorrhizal types seems to suggest that ErM and EcM plant species are more sensitive to the effects of road disturbance when compared to AM plant species, thus resulting in increased success for AM plant species along roadsides in environments where they would usually be competing with EcM and ErM plant species (Segre et al. 2016). This would also help explain the discrepancies between our results of increased AM vegetation cover in disturbed roadside conditions and the results of previous studies on disturbance in agricultural settings, where physical disturbances in the form of tillage led to reduced colonization by AM fungi (van der Heyde et al. 2017; Schnoor et al. 2011). This disparity would then be explained by the effect of altered biotic interactions (through a proportionally higher disruption of EcM and ErM plants) outweighing the negative effects of physical disturbance in a setting that is not already entirely AM-dominated. Supporting this hypothesis is the fact that the proportion of AM vegetation cover in the roadside plots tended to be comparatively lower when the proportions of AM vegetation cover in the adjacent vegetation was high. This pattern also aligned with the relationship between soil temperature and road disturbance, i.e., the fact that the difference between mycorrhizal proportions in the roadside and in the adjacent plots grew smaller following the regional temperature gradients, and higher following the regional elevational gradients. In both cases, when reaching the upper limits of the temperature gradients and at the highest saturation of AM natural vegetation, the effect of disturbance tended towards reversing, with lower proportions of AM vegetation cover along roadsides than in the adjacent vegetation (Fig.2, roadside plot line in red crossing over the adjacent vegetation line in green; Fig. 3, points below the

1/1-line, blue line falling below 1/1-line). These congruent patterns are to be expected as EcM and ErM vegetation tends to be most common in cooler conditions and at higher elevations (Barcelo et al. 2019; Bueno et al. 2021; Smith and Read 2010). Understanding these interactions and the general patterns that result from them is a crucial first step in disentangling the nexus between disturbance and changes in mycorrhizal type distribution.

While we cannot come to a definitive conclusion as to the mechanisms driving the aforementioned increase in AM plants to the detriment of EcM and ErM plants due to the strictly observational nature of our study, a possible hypothesis would be that roadside disturbance leads to increased soil nutrient mineralization which AM-fungi are more apt at taking advantage of (Read et al. 2004; Sulman et al. 2017). Indeed, it is no coincidence that most ruderal plant species are associated with AM-fungi. The fact that these ruderal AM plant species (as well as NM species) are generally faster growing and more disturbance tolerant due to their ability to take advantage of vegetation gaps (García de León et al. 2016), could begin to explain the patterns we observed: increased nutrient availability, less extreme pH and reduced competition in roadsides all act in favor of AM plant species.

Importantly, we also observed a clear difference in mycorrhizal association type between native and non-native plants species: almost all non-native plant species were NM or AM, with 0.2% of EcM non-native plant species being the exception. This matches the results of previous studies in the U.S. that found non-native plant species to be mainly AM or NM (Pringle et al. 2009). Although as we saw earlier that EcM/ErM dominated vegetation saw a greater increase in AM plant abundance upon disturbance, increases in non-native vegetation were more pronounced in AM-dominated communities. Additionally, non-native species had greater potential for establishing in the native community when that native community was already dominated by AM-associated native plant species (Fig. 4, Fig. S2). This suggests that plant communities that predominantly associate with the same mycorrhizal fungi as the non-native plant species are also more susceptible to potential invasions by these non-native plant species (Yang et al. 2013), either directly through interactions between mycorrhizal fungi, or indirectly through the selection for other associated plant traits, such as ruderality. The importance of anthropogenic disturbances in facilitating the success of non-native plant species outside of their natural range is well documented (Jauni, Gripenberg, and Ramula 2015; Lembrechts et al. 2016). However, the mechanisms linking these disturbances to increased non-native success remain poorly understood. We suggest that anthropogenic disturbances being favorable to the most common types of mycorrhizal association amongst non-native species could partly help explain the pattern of increased non-native species success in roadside-adjacent environments, especially in communities already dominated by AM or NM-associated species.

However, it remains important to keep the limitations of our study in mind when considering potential mechanisms that drive changes in plant species composition and non-native success. Indeed, our observations remain based on a proxy of mycorrhizal abundance shown previously to have limitations (Brundrett and Tedersoo 2019): aggregated datasets such as FungalRoot are bound to accumulate small errors and imprecisions and should be used with caution when looking at distribution patterns. This is partly why we limited our analyses to broad categories of mycorrhizal associations. Nevertheless, using large collections of datasets remains valuable as long as direct mycorrhizal measurements are not sufficiently available. Our results should thus be seen as a first investigation of global relationships between anthropogenic disturbances, mycorrhizal distribution and their potential impacts on non-native plant invasions, and the resulting observations as potential openings for further studies investigating how human activities can impact mycorrhizal communities and plant-fungal interactions.

Conclusion

Our results show a global pattern of anthropogenic disturbance influencing the distribution of plant cover associated with the different types of mycorrhizal fungi in mountains. AM and NM vegetation cover increased along mountain roads, while the cover of EcM and ErM vegetation decreased. This pattern was consistent across regions but varied in intensity along gradients of environmental factors and depending on the prevailing type of mycorrhiza in the natural vegetation. Indeed, cold-climate regions with higher representation

of EcM and ErM vegetation showed greater increases in AM vegetation as a result of road disturbance. Non-native plants were almost exclusively associated with AM fungi or NM, and in turn more successful in environments strongly dominated by AM associations, suggesting that disturbance could be facilitating non-native plant invasion through changes in local mycorrhizal communities. While we hypothesize that this shifting effect of disturbance on the distribution of mycorrhizal types could be caused by changing abiotic factors and in particular by changes in nutrient availabilities, further research with a focus on testing individual drivers associated with disturbance in an experimental setting would be required to truly understand which underlying processes drive the shifts we observed. Regardless, our results represent an important first global study of the role of anthropogenic disturbances in shaping plant communities through the mycorrhizal fungi they associate with. These findings have important implications for vegetation restoration worldwide, as they suggest that roadside disturbance can change the fundamental make-up of EcM- and ErM-dominated plant communities, potentially shifting communities between alternative stable states of mycorrhizal dominance that could be very difficult to reverse (Averill et al. 2022; Fukami et al. 2017).

References:

- Averill, Colin, Claire Fortunel, Daniel S. Maynard, Johan van den Hoogen, Michael C. Dietze, Jennifer M. Bhatnagar, and Thomas W. Crowther. 2022. “Alternative Stable States of the Forest Mycobiome Are Maintained through Positive Feedbacks.” *Nature Ecology and Evolution* 6(4):375–82.
- Barcelo, Milagros, Peter M. Van Bodegom, and Nadejda A. Soudzilovskaia. 2019. “Climate Drives the Spatial Distribution of Mycorrhizal Host Plants in Terrestrial Ecosystems Milagros Barceló.” *Journal of Ecology* 107(6):2564–73.
- Becker, Developer Rick. 2021. “S (Programming Language).”
- Brooks, Mollie E., Kasper Kristensen, Koen J. van Benthem, Arni Magnusson, Casper W. Berg, Anders Nielsen, Hans J. Skaug, Martin Maechler, and Benjamin M. Bolker. 2017. “{glmmTMB} Balances Speed and Flexibility Among Packages for Zero-Inflated Generalized Linear Mixed Modeling.” *The R Journal* 9(2):378–400.
- Brundrett, Mark C. and Leho Tedersoo. 2018. “Evolutionary History of Mycorrhizal Symbioses and Global Host Plant Diversity.” *New Phytologist* 220(4):1108–15.
- Brundrett, Mark and Leho Tedersoo. 2019. “Misdiagnosis of Mycorrhizas and Inappropriate Recycling of Data Can Lead to False Conclusions.” *New Phytologist* 221(1):18–24.
- Bueno, C. Guillermo, M. Gerz, M. Moora, D. Leon, D. Gomez-Garcia, D. García de Leon, X. Font, Saleh Al-Quraishy, Wael N. Hozzein, and M. Zobel. 2021. “Distribution of Plant Mycorrhizal Traits along an Elevational Gradient Does Not Fully Mirror the Latitudinal Gradient.” *Mycorrhiza* 31(2):149–59.
- Carteron, Alexis, Mark Vellend, and Etienne Laliberté. 2022. “Mycorrhizal Dominance Reduces Local Tree Species Diversity across US Forests.” *Nature Ecology and Evolution* 6(4):370–74.
- Clavel, Jan, Jonas Lembrechts, Jake Alexander, Sylvia Haider, Jonathan Lenoir, Martin A. Nu, Anibal Pauchard, Ivan Nijs, and Erik Verbruggen. 2020. “The Role of Arbuscular Mycorrhizal Fungi in Nonnative Plant Invasion along Mountain Roads.”
- Cribari-Neto, Francisco and Achim Zeileis. 2010. “Beta Regression in R.” *Journal of Statistical Software* 34(2):1–24.
- Dainese, Matteo, Sami Aikio, Philip E. Hulme, Alessio Bertolli, Filippo Prosser, and Lorenzo Marini. 2017. “Human Disturbance and Upward Expansion of Plants in a Warming Climate.” *Nature Climate Change* 7(8):577–80.
- Fox, John and Sanford Weisberg. 2018. *An R Companion to Applied Regression*. Sage publications.

- Fuentes-lillo, Eduardo, Jonas Lembrechts, Lohengrin A. Cavieres, Alejandra Jiménez, Sylvia Haider, Agustina Barros, and Anibal Pauchard. 2021. “Anthropogenic Factors Overrule Local Abiotic Variables in Determining Non-Native Plant Invasions in Mountains.” 8:3671–86.
- Fukami, Tadashi, Mifuyu Nakajima, Claire Fortunel, Paul V. A. Fine, Christopher Baraloto, Sabrina E. Russo, and Kabir G. Peay. 2017. “Geographical Variation in Community Divergence: Insights from Tropical Forest Monodominance by Ectomycorrhizal Trees.” *American Naturalist* 190(august):S105–22.
- García de León, David, Mari Moora, Maarja Öpik, Teele Jairus, Lena Neuenkamp, Martti Vasar, C. Guillermo Bueno, Maret Gerz, John Davison, and Martin Zobel. 2016. “Dispersal of Arbuscular Mycorrhizal Fungi and Plants during Succession.” *Acta Oecologica* 77:128–35.
- Gerz, Maret, C. Guillermo Bueno, Wim A. Ozinga, Martin Zobel, and Mari Moora. 2019. “Responses of Plant Community Mycorrhization to Anthropogenic Influence Depend on the Habitat and Mycorrhizal Type.” *Oikos* 128:1565–75.
- Grêt-regamey, Authors, Sibyl Hanna, and Adrienne Gre. 2021. “Mountain Ecosystem Services : Who Cares ? Mountain Ecosystem Services : Who Cares ?” *Mountain Research and Development* 32.
- Haider, Sylvia, Jonas J. Lembrechts, Keith McDougall, Anibal Pauchard, Jake M. Alexander, Agustina Barros, Lohengrin A. Cavieres, Irfan Rashid, Lisa J. Rew, Alla Aleksanyan, Jose R. Arevalo, Valeria Aschero, Chelsea Chisholm, V. Ralph Clark, Jan Clavel, Curtis Daehler, Pervaiz A. Dar, Hansjorg Dietz, Romina D. Dimarco, Peter Edwards, Franz Essl, Eduardo Fuentes-Lillo, Antoine Guisan, Onalenna Gwate, Anna L. Hargreaves, Gabi Jakobs, Alejandra Jimenez, Paul Kardol, Christoph Kueffer, Christian Larson, Jonathan Lenoir, Bernd Lenzner, Miguel A. Padron Mederos, Maritza Mihoc, Ann Milbau, John W. Morgan, Jana Mullerova, Bridgett J. Naylor, Ivan Nijs, Martin A. Nunez, Rudiger Otto, Niels Preuk, Amanda Ratier Backes, Zafar A. Reshi, Sabine B. Rumpf, Veronica Sandoya, Mellea Schroder, Karina L. Speziale, Davnah Urbach, Graciela Valencia, Vigdis Vandvik, Michaela Vitkova, Tom Vorstenbosch, Tom W. N. Walker, Neville Walsh, Genevieve Wright, Shengwei Zong, and Tim Seipel. 2022. “Think Globally, Measure Locally: The MIREN Standardized Protocol for Monitoring Plant Species Distributions along Elevation Gradients.” *Ecology and Evolution* 12(2).
- Harrison, Xavier A., Lynda Donaldson, Maria Eugenia Correa-cano, Julian Evans, David N. Fisher, Cecily E. D. Goodwin, Beth S. Robinson, David J. Hodgson, and Richard Inger. 2018. “A Brief Introduction to Mixed Effects Modelling and Multi-Model Inference in Ecology.” *PeerJ* 6(e4794):1–32.
- van der Heyde, Mieke, Brian Ohsowski, Lynette K. Abbott, and Miranda Hart. 2017. “Arbuscular Mycorrhizal Fungus Responses to Disturbance Are Context-Dependent.” *Mycorrhiza* 27(5):431–40.
- Jauni, Miia, Sofi Gripenberg, and Satu Ramula. 2015. “Non-Native Plant Species Benefit from Disturbance : A Meta-Analysis.” *Oikos* 124(2):122–29.
- Kivlin, Stephanie N., Christine V. Hawkes, and Kathleen K. Treseder. 2011. “Global Diversity and Distribution of Arbuscular Mycorrhizal Fungi.” *Soil Biology and Biochemistry* 43(11):2294–2303.
- Klironomos, John, Martin Zobel, Mark Tibbett, William D. Stock, Matthias C. Rillig, Jeri L. Parrent, Mari Moora, Alexander M. Koch, Jose M. Facelli, Evelina Facelli, Ian A. Dickie, and James D. Bever. 2011. “Forces That Structure Plant Communities: Quantifying the Importance of the Mycorrhizal Symbiosis.” *New Phytologist* 189(2):366–70.
- Kohler, Thomas, Markus Giger, Hans Hurni, Cordula Ott, Urs Wiesmann, Susanne Wymann Von Dach, and Daniel Maselli. 2010. “Mountains and Climate Change: A Global Concern.” *Mountain Research and Development* 30(1):53–55.
- Lekberg, Ylva, Sean M. Gibbons, Soren Rosendahl, and Philip W. Ramsey. 2013. “Severe Plant Invasions Can Increase Mycorrhizal Fungal Abundance and Diversity.” *ISME Journal* 7(7):1424–33.

Lembrechts, Jonas J., Johan van den Hoogen, Juha Aalto, Michael B. Ashcroft, Pieter De Frenne, Julia Kemppinen, Martin Kopecky, Miska Luoto, Ilya M. D. Maclean, Thomas W. Crowther, Joseph J. Bailey, Stef Haesen, David H. Klinges, Pekka Niittynen, Brett R. Scheffers, Koenraad Van Meerbeek, Peter Aartsma, Otar Abdalaze, Mehdi Abedi, Rien Aerts, Negar Ahmadian, Antje Ahrends, Juha M. Alatalo, Jake M. Alexander, Camille Nina Allonsius, Jan Altman, Christof Ammann, Christian Andres, Christopher Andrews, Jonas Ardo, Nicola Arriga, Alberto Arzac, Valeria Aschero, Rafael L. Assis, Jakob Johann Assmann, Maaike Y. Bader, Khadijeh Bahalkeh, Peter Barančok, Isabel C. Barrio, Agustina Barros, Matti Barthel, Edmund W. Basham, Marijn Bauters, Manuele Bazzichetto, Luca Belelli Marchesini, Michael C. Bell, Juan C. Benavides, José Luis Benito Alonso, Bernd J. Berauer, Jarle W. Bjerke, Robert G. Björk, Mats P. Björkman, Katrin Björnsdóttir, Benjamin Blonder, Pascal Boeckx, Julia Boike, Stef Bokhorst, Bárbara N. S. Brum, Josef Brúna, Nina Buchmann, Pauline Buysse, José Luis Camargo, Otávio C. Campoe, Onur Candan, Rafaella Canessa, Nicoletta Cannone, Michele Carboognani, Jofre Carnicer, Angélica Casanova-Katny, Simone Cesarz, Bogdan Chojnicki, Philippe Choler, Steven L. Chown, Edgar F. Cifuentes, Marek Čiliak, Tamara Contador, Peter Convey, Elisabeth J. Cooper, Edoardo Cremonese, Salvatore R. Curasi, Robin Curtis, Maurizio Cutini, C. Johan Dahlberg, Gergana N. Daskalova, Miguel Angel de Pablo, Stefano Della Chiesa, Jürgen Dengler, Bart Deronde, Patrice Descombes, Valter Di Cecco, Michele Di Musciano, Jan Dick, Romina D. Dimarco, Jiri Dolezal, Ellen Dorrepaal, Jiří Dušek, Nico Eisenhauer, Lars Eklundh, Todd E. Erickson, Brigitta Erschbamer, Werner Eugster, Robert M. Ewers, Dan A. Exton, Nicolas Fanin, Fatih Fazlioglu, Iris Feigenwinter, Giuseppe Fenu, Olga Ferlian, M. Rosa Fernández Calzado, Eduardo Fernández-Pascual, Manfred Finckh, Rebecca Finger Higgens, T'ai G. W. Forte, Erika C. Freeman, Esther R. Frei, Eduardo Fuentes-Lillo, Rafael A. García, María B. García, Charly Géron, Mana Gharun, Dany Ghosn, Khatuna Gigauri, Anne Gobin, Ignacio Goded, Mathias Goeckede, Felix Gottschall, Keith Goulding, Sanne Govaert, Bente Jessen Graae, Sarah Greenwood, Caroline Greiser, Achim Grelle, Benoit Guénard, Mauro Guglielmin, Joannès Guillemot, Peter Haase, Sylvia Haider, Aud H. Halbritter, Maroof Hamid, Albin Hammerle, Arndt Hampe, Siri V. Haugum, Lucia Hederová, Bernard Heinesch, Carole Helfter, Daniel Heppenstrick, Maximiliane Herberich, Mathias Herbst, Luise Hermanutz, David S. Hik, Raúl Hoffrén, Jürgen Homeier, Lukas Hörtnagl, Toke T. Høye, Filip Hrbacek, Kristoffer Hylander, Hiroki Iwata, Marcin Antoni Jackowicz-Korczynski, Hervé Jactel, Järvi Järveoja, Szymon Jastrzebowski, Anke Jentsch, Juan J. Jiménez, Ingibjörg S. Jónsdóttir, Tommaso Jucker, Alistair S. Jump, Radoslaw Juszczak, Róbert Kanka, Vít Kašpar, George Kazakis, Julia Kelly, Anzar A. Khuroo, Leif Klemedtsson, Marcin Klisz, Natascha Kljun, Alexander Knohl, Johannes Kobler, Jozef Kollár, Martyna M. Kotowska, Bence Kovács, Juergen Kreyling, Andrea Lamprecht, Simone I. Lang, Christian Larson, Keith Larson, Kamil Laska, Gueric le Maire, Rachel I. Leihy, Luc Lens, Bengt Liljebldh, Annalea Lohila, Juan Lorite, Benjamin Loubet, Joshua Lynn, Martin Macek, Roy Mackenzie, Enzo Magliulo, Regine Maier, Francesco Malfasi, František Máliš, Matěj Man, Giovanni Manca, Antonio Manco, Tanguy Manise, Paraskevi Manolaki, Felipe Marciniak, Radim Matula, Ana Clara Mazzolari, Sergiy Medinets, Volodymyr Medinets, Camille Meeussen, Sonia Merinero, Rita de Cássia Guimarães Mesquita, Katrin Meusburger, Filip J. R. Meysman, Sean T. Michaletz, Ann Milbau, Dmitry Moiseev, Pavel Moiseev, Andrea Mondoni, Ruth Monfries, Leonardo Montagnani, Mikel Moriana-Armendariz, Umberto Morra di Cella, Martin Mörsdorf, Jonathan R. Mosedale, Lena Muffler, Miriam Muñoz-Rojas, Jonathan A. Myers, Isla H. Myers-Smith, Laszlo Nagy, Marianna Nardino, Ilona Naujokaitis-Lewis, Emily Newling, Lena Nicklas, Georg Niedrist, Armin Niessner, Mats B. Nilsson, Signe Normand, Marcelo D. Nosetto, Yann Nouvellon, Martin A. Nuñez, Romà Ogaya, Jérôme Ogée, Joseph Okello, Janusz Olejnik, Jørgen Eivind Olesen, Øystein H. Opedal, Simone Orsenigo, Andrej Palaj, Timo Pampuch, Alexey V. Panov, Meelis Pärtel, Ada Pastor, Aníbal Pauchard, Harald Pauli, Marian Pavelka, William D. Pearse, Matthias Peichl, Loïc Pellissier, Rachel M. Penczykowski, Josep Penuelas, Matteo Petit Bon, Alessandro Petraglia, Shyam S. Phartyal, Gareth K. Phoenix, Casimiro Pio, Andrea Pitacco, Camille Pitteloud, Roman Plichta, Francesco Porro, Miguel Portillo-Estrada, Jérôme Poulénard, Rafael Poyatos, Anatoly S. Prokushkin, Radoslaw Puchalka, Mihai Pușcaș, Dajana Radujković, Krystal Randall, Amanda Ratier Backes, Sabine Remmele, Wolfram Remmers, David Renault, Anita C. Risch, Christian Rixen, Sharon A. Robinson, Bjorn J. M. Robroek, Adrian V. Rocha, Christian Rossi, Graziano Rossi, Olivier Roupsard, Alexey V. Rubtsov, Patrick Saccone, Clotilde Sagot, Jhonatan Sallo Bravo, Cinthya C. Santos, Judith M. Sarneel, Tobias Scharnweber, Jonas Schmed-

des, Marius Schmidt, Thomas Scholten, Max Schuchardt, Naomi Schwartz, Tony Scott, Julia Seeber, Ana Cristina Segalin de Andrade, Tim Seipel, Philipp Semenchuk, Rebecca A. Senior, Josep M. Serra-Diaz, Piotr Sewerniak, Ankit Shekhar, Nikita V. Sidenko, Lukas Siebicke, Laura Siegwart Collier, Elizabeth Simpson, David P. Siqueira, Zuzana Sitková, Johan Six, Marko Smiljanic, Stuart W. Smith, Sarah Smith-Tripp, Ben Somers, Mia Vedel Sørensen, José João L. L. Souza, Bartolomeu Israel Souza, Arildo Souza Dias, Marko J. Spasojevic, James D. M. Speed, Fabien Spicher, Angela Stanisci, Klaus Steinbauer, Rainer Steinbrecher, Michael Steinwandter, Michael Stemkovski, Jörg G. Stephan, Christian Stiegler, Stefan Stoll, Martin Svátek, Miroslav Svoboda, Torbern Tagesson, Andrew J. Tanentzap, Franziska Tanneberger, Jean Paul Theurillat, Haydn J. D. Thomas, Andrew D. Thomas, Katja Tielbörger, Marcello Tomaselli, Urs Albert Treier, Mario Trouillier, Pavel Dan Turtureanu, Rosamond Tutton, Vilna A. Tyystjärvi, Masahito Ueyama, Karol Ujházy, Mariana Ujházyová, Domas Uogintas, Anastasiya V. Urban, Josef Urban, Marek Urbaniak, Tudor Mihai Ursu, Francesco Primo Vaccari, Stijn Van de Vondel, Liesbeth van den Brink, Maarten Van Geel, Vigdis Vandvik, Pieter Vangansbeke, Andrej Varlagin, G. F. Veen, Elmar Veenendaal, Susanna E. Venn, Hans Verbeeck, Erik Verbruggen, Frank G. A. Verheijen, Luis Villar, Luca Vitale, Pascal Vittoz, Maria Vives-Inglá, Jonathan von Oppen, Josefine Walz, Runxi Wang, Yifeng Wang, Robert G. Way, Ronja E. M. Wedegärtner, Robert Weigel, Jan Wild, Matthew Wilkinson, Martin Wilmking, Lisa Wingate, Manuela Winkler, Sonja Wipf, Georg Wohlfahrt, Georgios Xenakis, Yan Yang, Zicheng Yu, Kailiang Yu, Florian Zellweger, Jian Zhang, Zhaochen Zhang, Peng Zhao, Klaudia Ziemblińska, Reiner Zimmermann, Shengwei Zong, Viacheslav I. Zyryanov, Ivan Nijs, and Jonathan Lenoir. 2022. “Global Maps of Soil Temperature.” *Global Change Biology* 28(9):3110–44.

Lembrechts, Jonas J., Aníbal Pauchard, Jonathan Lenoir, Martín A. Nuñez, Charly Geron, Arne Ven, Pablo Bravo-Monasterio, Ernesto Teneb, Ivan Nijs, and Ann Milbau. 2016. “Disturbance Is the Key to Plant Invasions in Cold Environments.” *Proceedings of the National Academy of Sciences of the United States of America* 113(49):14061–66.

Lüdecke, Daniel, Mattan Ben-Shachar, Indrajeet Patil, Philip Waggoner, and Dominique Makowski. 2021. “Performance: An R Package for Assessment, Comparison and Testing of Statistical Models.” *Journal of Open Source Software* 6(60):3139.

McDougall, Keith L., Jonas Lembrechts, Lisa J. Rew, Sylvia Haider, Lohengrin A. Cavieres, Christoph Kueffer, Ann Milbau, Bridgett J. Naylor, Martin A. Nuñez, Anibal Pauchard, Tim Seipel, Karina L. Speziale, Genevieve T. Wright, and Jake M. Alexander. 2018. “Running off the Road: Roadside Non-Native Plants Invading Mountain Vegetation.” *Biological Invasions* 1–13.

Müllerová, Jana, Michaela Vítková, and Ondřej Vítek. 2011. “The Impacts of Road and Walking Trails upon Adjacent Vegetation: Effects of Road Building Materials on Species Composition in a Nutrient Poor Environment.” *Science of the Total Environment* 409(19):3839–49.

Neuenkamp, Lena, Mari Moora, Maarja Öpik, John Davison, Maret Gerz, Minna Männistö, Teele Jairus, Martti Vasar, and Martin Zobel. 2018. “The Role of Plant Mycorrhizal Type and Status in Modulating the Relationship between Plant and Arbuscular Mycorrhizal Fungal Communities.” *New Phytologist* 220(4):1236–47.

O’Farrell, P. J. and S. J. Milton. 2006. “Road Verge and Rangeland Plant Communities in the Southern Karoo: Exploring What Influences Diversity, Dominance and Cover.” *Biodiversity and Conservation* 15(3):921–38.

Öpik, M., A. Vanatoa, E. Vanatoa, M. Moora, J. Davison, J. M. Kalwij, Ü. Reier, and M. Zobel. 2010. “The Online Database MaarjAM Reveals Global and Ecosystemic Distribution Patterns in Arbuscular Mycorrhizal Fungi (Glomeromycota).” *New Phytologist* 188(1):223–41.

Phillips, Richard P., Edward Brzostek, and Meghan G. Midgley. 2013. “The Mycorrhizal-Associated Nutrient Economy : A New Framework for Predicting Carbon – Nutrient Couplings in Temperate Forests.” *New Phytologist* 199(1):41–51.

- Pollnac, Fredric, Tim Seipel, Charles Repath, and Lisa J. Rew. 2012. “Plant Invasion at Landscape and Local Scales along Roadways in the Mountainous Region of the Greater Yellowstone Ecosystem.” *Biological Invasions* 14(8):1753–63.
- Pringle, Anne, James D. Bever, Monique Gardes, Jeri L. Parrent, Matthias C. Rillig, and John N. Klironomos. 2009. “Mycorrhizal Symbioses and Plant Invasions.” *Annual Review of Ecology, Evolution, and Systematics* 40(1):699–715.
- R Core Team. 2021. “R: A Language and Environment for Statistical Computing.”
- Rahbek, Carsten, Michael K. Borregaard, Robert K. Colwell, Bo Dalsgaard, Ben G. Holt, Naia Morueta-Holme, David Nogues-Bravo, Robert J. Whittaker, and Jon Fjeldsa. 2019. “Humboldt’s Enigma: What Causes Global Patterns of Mountain Biodiversity?” *Science* 365(6458):1108–13.
- Read, David J., Jonathan R. Leake, and Jesus Perez-moreno. 2004. “Mycorrhizal Fungi as Drivers of Ecosystem Processes in Heathland and Boreal Forest Biomes 1.” *Canadian Journal of Botany* 82(8):1243–63.
- Schnoor, Tim Krone, Ylva Lekberg, Soren Rosendahl, and Pal Axel Olsson. 2011. “Mechanical Soil Disturbance as a Determinant of Arbuscular Mycorrhizal Fungal Communities in Semi-Natural Grassland.” *Mycorrhiza* 21(3):211–20.
- Segre, Hila, Niv DeMalach, Zalmen Henkin, and Ronen Kadmon. 2016. “Quantifying Competitive Exclusion and Competitive Release in Ecological Communities: A Conceptual Framework and a Case Study.” *PLoS ONE* 11(8):1–14.
- Smith, Sally E. and David J. Read. 2010. *Mycorrhizal Symbiosis*. Academic press.
- Soudzilovskaia, Nadejda A., Stijn Vaessen, Milagros Barcelo, Jinhong He, Saleh Rahimlou, Mark C. Brundrett, Sofia I. F. Gomes, Vincent Merckx, and Leho Tedersoo. 2020. “FungalRoot : Global Online Database of Plant Mycorrhizal Associations.” *New Phytologist* 227(3):955–66.
- Soudzilovskaia, Nadejda A., Stijn Vaessen, Maarten van’t Zelfde, and Niels Raes. 2017. “Global Patterns of Mycorrhizal Distribution and Their Environmental Drivers.” Pp. 223–35 in *Biogeography of mycorrhizal symbiosis*. Springer.
- Sulman, Benjamin N., Edward R. Brzostek, Chiara Medici, Elena Shevliakova, Duncan N. L. Menge, and Richard P. Phillips. 2017. “Feedbacks between Plant N Demand and Rhizosphere Priming Depend on Type of Mycorrhizal Association.” *Ecology Letters* 20(8):1043–53.
- Wagg, Cameron, S. Franz Bender, Franco Widmer, and Marcel G. A. Van Der Heijden. 2014. “Soil Biodiversity and Soil Community Composition Determine Ecosystem Multifunctionality.” *Proceedings of the National Academy of Sciences of the United States of America* 111(14):5266–70.
- Wang, B. and Y. L. Qiu. 2006. “Phylogenetic Distribution and Evolution of Mycorrhizas in Land Plants.” *Mycorrhiza* 16(5):299–363.
- Yang, Qiang, Juli Carrillo, Hongyue Jin, Lei Shang, Stephen M. Hovick, Somereet Nijjer, Christopher A. Gabler, Bo Li, and Evan Siemann. 2013. “Plant-Soil Biota Interactions of an Invasive Species in Its Native and Introduced Ranges: Implications for Invasion Success.” *Soil Biology and Biochemistry* 65:78–85.
- Zuur, Alain F., Elena N. Ieno, Neil J. Walker, Anatoly A. Saveliev, and Graham M. Smith. 2009. *Mixed Effects Models and Extensions in Ecology with R*. First. New-York: Springer-Verlag New York.
- Averill, Colin, Claire Fortunel, Daniel S. Maynard, Johan van den Hoogen, Michael C. Dietze, Jennifer M. Bhatnagar, and Thomas W. Crowther. 2022. “Alternative Stable States of the Forest Mycobiome Are Maintained through Positive Feedbacks.” *Nature Ecology and Evolution* 6(4):375–82.

- Barcelo, Milagros, Peter M. Van Bodegom, and Nadejda A. Soudzilovskaia. 2019. “Climate Drives the Spatial Distribution of Mycorrhizal Host Plants in Terrestrial Ecosystems Milagros Barcelo.” *Journal of Ecology* 107(6):2564–73.
- Becker, Developer Rick. 2021. “S (Programming Language).”
- Brooks, Mollie E., Kasper Kristensen, Koen J. van Benthem, Arni Magnusson, Casper W. Berg, Anders Nielsen, Hans J. Skaug, Martin Maechler, and Benjamin M. Bolker. 2017. “{glmmTMB} Balances Speed and Flexibility Among Packages for Zero-Inflated Generalized Linear Mixed Modeling.” *The R Journal* 9(2):378–400.
- Brundrett, Mark C. and Leho Tedersoo. 2018. “Evolutionary History of Mycorrhizal Symbioses and Global Host Plant Diversity.” *New Phytologist* 220(4):1108–15.
- Brundrett, Mark and Leho Tedersoo. 2019. “Misdiagnosis of Mycorrhizas and Inappropriate Recycling of Data Can Lead to False Conclusions.” *New Phytologist* 221(1):18–24.
- Bueno, C. Guillermo, M. Gerz, M. Moora, D. Leon, D. Gomez-Garcia, D. Garcia de Leon, X. Font, Saleh Al-Quraishy, Wael N. Hozzein, and M. Zobel. 2021. “Distribution of Plant Mycorrhizal Traits along an Elevational Gradient Does Not Fully Mirror the Latitudinal Gradient.” *Mycorrhiza* 31(2):149–59.
- Carteron, Alexis, Mark Vellend, and Etienne Laliberte. 2022. “Mycorrhizal Dominance Reduces Local Tree Species Diversity across US Forests.” *Nature Ecology and Evolution* 6(4):370–74.
- Clavel, Jan, Jonas Lembrechts, Jake Alexander, Sylvia Haider, Jonathan Lenoir, Martin A. Nu, Anibal Pauchard, Ivan Nijs, and Erik Verbruggen. 2020. “The Role of Arbuscular Mycorrhizal Fungi in Nonnative Plant Invasion along Mountain Roads.”
- Cribari-Neto, Francisco and Achim Zeileis. 2010. “Beta Regression in R.” *Journal of Statistical Software* 34(2):1–24.
- Dainese, Matteo, Sami Aikio, Philip E. Hulme, Alessio Bertolli, Filippo Prosser, and Lorenzo Marini. 2017. “Human Disturbance and Upward Expansion of Plants in a Warming Climate.” *Nature Climate Change* 7(8):577–80.
- Fox, John and Sanford Weisberg. 2018. *An R Companion to Applied Regression*. Sage publications.
- Fuentes-lillo, Eduardo, Jonas Lembrechts, Lohengrin A. Cavieres, Alejandra Jimenez, Sylvia Haider, Agustina Barros, and Anibal Pauchard. 2021. “Anthropogenic Factors Overrule Local Abiotic Variables in Determining Non-Native Plant Invasions in Mountains.” 8:3671–86.
- Fukami, Tadashi, Mifuyu Nakajima, Claire Fortunel, Paul V. A. Fine, Christopher Baraloto, Sabrina E. Russo, and Kabir G. Peay. 2017. “Geographical Variation in Community Divergence: Insights from Tropical Forest Monodominance by Ectomycorrhizal Trees.” *American Naturalist* 190(august):S105–22.
- Garcia de Leon, David, Mari Moora, Maarja Opik, Teele Jairus, Lena Neuenkamp, Martti Vasar, C. Guillermo Bueno, Maret Gerz, John Davison, and Martin Zobel. 2016. “Dispersal of Arbuscular Mycorrhizal Fungi and Plants during Succession.” *Acta Oecologica* 77:128–35.
- Gerz, Maret, C. Guillermo Bueno, Wim A. Ozinga, Martin Zobel, and Mari Moora. 2019. “Responses of Plant Community Mycorrhization to Anthropogenic Influence Depend on the Habitat and Mycorrhizal Type.” *Oikos* 128:1565–75.
- Gret-regamey, Authors, Sibyl Hanna, and Adrienne Gre. 2021. “Mountain Ecosystem Services : Who Cares ? Mountain Ecosystem Services : Who Cares ?” *Mountain Research and Development* 32.
- Haider, Sylvia, Jonas J. Lembrechts, Keith McDougall, Anibal Pauchard, Jake M. Alexander, Agustina Barros, Lohengrin A. Cavieres, Irfan Rashid, Lisa J. Rew, Alla Aleksanyan, Jose R. Arevalo, Valeria Aschero, Chelsea Chisholm, V. Ralph Clark, Jan Clavel, Curtis Daehler, Pervaiz A. Dar, Hansjorg Dietz,

Romina D. Dimarco, Peter Edwards, Franz Essl, Eduardo Fuentes-Lillo, Antoine Guisan, Onalenna Gwate, Anna L. Hargreaves, Gabi Jakobs, Alejandra Jimenez, Paul Kardol, Christoph Kueffer, Christian Larson, Jonathan Lenoir, Bernd Lenzner, Miguel A. Padron Mederos, Maritza Mihoc, Ann Milbau, John W. Morgan, Jana Mullerova, Bridgett J. Naylor, Ivan Nijs, Martin A. Nunez, Rudiger Otto, Niels Preuk, Amanda Ratier Backes, Zafar A. Reshi, Sabine B. Rumpf, Veronica Sandoya, Mellea Schroder, Karina L. Speziale, Davnah Urbach, Graciela Valencia, Vigdis Vandvik, Michaela Vitkova, Tom Vorstenbosch, Tom W. N. Walker, Neville Walsh, Genevieve Wright, Shengwei Zong, and Tim Seipel. 2022. “Think Globally, Measure Locally: The MIREN Standardized Protocol for Monitoring Plant Species Distributions along Elevation Gradients.” *Ecology and Evolution* 12(2).

Harrison, Xavier A., Lynda Donaldson, Maria Eugenia Correa-cano, Julian Evans, David N. Fisher, Cecily E. D. Goodwin, Beth S. Robinson, David J. Hodgson, and Richard Inger. 2018. “A Brief Introduction to Mixed Effects Modelling and Multi-Model Inference in Ecology.” *PeerJ* 6(e4794):1–32.

van der Heyde, Mieke, Brian Ohsowski, Lynette K. Abbott, and Miranda Hart. 2017. “Arbuscular Mycorrhizal Fungus Responses to Disturbance Are Context-Dependent.” *Mycorrhiza* 27(5):431–40.

Jauni, Miia, Sofi Gripenberg, and Satu Ramula. 2015. “Non-Native Plant Species Benefit from Disturbance: A Meta-Analysis.” *Oikos* 124(2):122–29.

Kivlin, Stephanie N., Christine V. Hawkes, and Kathleen K. Treseder. 2011. “Global Diversity and Distribution of Arbuscular Mycorrhizal Fungi.” *Soil Biology and Biochemistry* 43(11):2294–2303.

Klironomos, John, Martin Zobel, Mark Tibbett, William D. Stock, Matthias C. Rillig, Jeri L. Parrent, Mari Moora, Alexander M. Koch, Jose M. Facelli, Evelina Facelli, Ian A. Dickie, and James D. Bever. 2011. “Forces That Structure Plant Communities: Quantifying the Importance of the Mycorrhizal Symbiosis.” *New Phytologist* 189(2):366–70.

Kohler, Thomas, Markus Giger, Hans Hurni, Cordula Ott, Urs Wiesmann, Susanne Wymann Von Dach, and Daniel Maselli. 2010. “Mountains and Climate Change: A Global Concern.” *Mountain Research and Development* 30(1):53–55.

Lekberg, Ylva, Sean M. Gibbons, Soren Rosendahl, and Philip W. Ramsey. 2013. “Severe Plant Invasions Can Increase Mycorrhizal Fungal Abundance and Diversity.” *ISME Journal* 7(7):1424–33.

Lembrechts, Jonas J., Johan van den Hoogen, Juha Aalto, Michael B. Ashcroft, Pieter De Frenne, Julia Kempainen, Martin Kopecky, Miska Luoto, Ilya M. D. Maclean, Thomas W. Crowther, Joseph J. Bailey, Stef Haesen, David H. Klings, Pekka Niittynen, Brett R. Scheffers, Koenraad Van Meerbeek, Peter Aartsma, Otar Abdalaze, Mehdi Abedi, Rien Aerts, Negar Ahmadian, Antje Ahrends, Juha M. Alatalo, Jake M. Alexander, Camille Nina Allonsius, Jan Altman, Christof Ammann, Christian Andres, Christopher Andrews, Jonas Ardo, Nicola Arriga, Alberto Arzac, Valeria Aschero, Rafael L. Assis, Jakob Johann Assmann, Maaïke Y. Bader, Khadijeh Bahalkheh, Peter Barančok, Isabel C. Barrio, Agustina Barros, Matti Barthel, Edmund W. Basham, Marijn Bauters, Manuele Bazzichetto, Luca Beilelli Marchesini, Michael C. Bell, Juan C. Benavides, José Luis Benito Alonso, Bernd J. Berauer, Jarle W. Bjerke, Robert G. Björk, Mats P. Björkman, Katrin Björnsdóttir, Benjamin Blonder, Pascal Boeckx, Julia Boike, Stef Bokhorst, Bárbara N. S. Brum, Josef Brůna, Nina Buchmann, Pauline Buysse, José Luis Camargo, Otávio C. Campoe, Onur Candan, Rafaella Canessa, Nicoletta Cannone, Michele Carbognani, Jofre Carnicer, Angélica Casanova-Katny, Simone Cesarz, Bogdan Chojnicki, Philippe Choler, Steven L. Chown, Edgar F. Cifuentes, Marek Čiliak, Tamara Contador, Peter Convey, Elisabeth J. Cooper, Edoardo Cremonese, Salvatore R. Curasi, Robin Curtis, Maurizio Cutini, C. Johan Dahlberg, Gergana N. Daskalova, Miguel Angel de Pablo, Stefano Della Chiesa, Jürgen Dengler, Bart Deronde, Patrice Descombes, Valter Di Cecco, Michele Di Musciano, Jan Dick, Romina D. Dimarco, Jiri Dolezal, Ellen Dorrepaal, Jiří Dušek, Nico Eisenhauer, Lars Eklundh, Todd E. Erickson, Brigitta Erschbamer, Werner Eugster, Robert M. Ewers, Dan A. Exton, Nicolas Fanin, Fatih Fazlioglu, Iris Feigenwinter, Giuseppe Fenu, Olga Ferlian, M. Rosa Fernández Calzado, Eduardo Fernández-Pascual, Manfred Finckh, Rebecca Finger Higgins, T'ai G. W. Forte, Erika C. Freeman, Esther R. Frei,

Eduardo Fuentes-Lillo, Rafael A. García, María B. García, Charly Géron, Mana Gharun, Dany Ghosn, Khatuna Gigauri, Anne Gobin, Ignacio Goded, Mathias Goeckede, Felix Gottschall, Keith Goulding, Sanne Govaert, Bente Jessen Graae, Sarah Greenwood, Caroline Greiser, Achim Grelle, Benoit Guénard, Mauro Guglielmin, Joannès Guillemot, Peter Haase, Sylvia Haider, Aud H. Halbritter, Maroof Hamid, Albin Hammerle, Arndt Hampe, Siri V. Haugum, Lucia Hederová, Bernard Heinesch, Carole Helfter, Daniel Heppenstrick, Maximiliane Herberich, Mathias Herbst, Luise Hermanutz, David S. Hik, Raúl Hoffrén, Jürgen Homeier, Lukas Hörtnagl, Toke T. Høye, Filip Hrbacek, Kristoffer Hylander, Hiroki Iwata, Marcin Antoni Jackowicz-Korczynski, Hervé Jactel, Järvi Järveoja, Szymon Jastrzebowski, Anke Jentsch, Juan J. Jiménez, Ingibjörg S. Jónsdóttir, Tommaso Jucker, Alistair S. Jump, Radoslaw Juszczak, Róbert Kanka, Vít Kašpar, George Kazakis, Julia Kelly, Anzar A. Khuroo, Leif Klemedtsson, Marcin Klisz, Natascha Kljun, Alexander Knohl, Johannes Kobler, Jozef Kollár, Martyna M. Kotowska, Bence Kovács, Juergen Kreyling, Andrea Lamprecht, Simone I. Lang, Christian Larson, Keith Larson, Kamil Laska, Guerrie le Maire, Rachel I. Leihy, Luc Lens, Bengt Liljebadh, Annalea Lohila, Juan Lorite, Benjamin Loubet, Joshua Lynn, Martin Macek, Roy Mackenzie, Enzo Magliulo, Regine Maier, Francesco Malfasi, František Máliš, Matěj Man, Giovanni Manca, Antonio Manco, Tanguy Manise, Paraskevi Manolaki, Felipe Marciniak, Radim Matula, Ana Clara Mazzolari, Sergiy Medinets, Volodymyr Medinets, Camille Meeussen, Sonia Merinero, Rita de Cássia Guimarães Mesquita, Katrin Meusburger, Filip J. R. Meysman, Sean T. Michaletz, Ann Milbau, Dmitry Moiseev, Pavel Moiseev, Andrea Mondoni, Ruth Monfries, Leonardo Montagnani, Mikel Moriana-Armendariz, Umberto Morra di Cella, Martin Mörsdorf, Jonathan R. Mosedale, Lena Muffler, Miriam Muñoz-Rojas, Jonathan A. Myers, Isla H. Myers-Smith, Laszlo Nagy, Marianna Nardino, Ilona Naujokaitis-Lewis, Emily Newling, Lena Nicklas, Georg Niedrist, Armin Niessner, Mats B. Nilsson, Signe Normand, Marcelo D. Nosetto, Yann Nouvellon, Martin A. Nuñez, Romà Ogaya, Jérôme Ogée, Joseph Okello, Janusz Olejnik, Jørgen Eivind Olesen, Øystein H. Opedal, Simone Orsenigo, Andrej Palaj, Timo Pampuch, Alexey V. Panov, Meelis Pärtel, Ada Pastor, Aníbal Pauchard, Harald Pauli, Marian Pavelka, William D. Pearse, Matthias Peichl, Loïc Pellissier, Rachel M. Penczykowski, Josep Penuelas, Matteo Petit Bon, Alessandro Petraglia, Shyam S. Phartyal, Gareth K. Phoenix, Casimiro Pio, Andrea Pitacco, Camille Pitteloud, Roman Plichta, Francesco Porro, Miguel Portillo-Estrada, Jérôme Poulénard, Rafael Poyatos, Anatoly S. Prokushkin, Radoslaw Puchalka, Mihai Puşcaş, Dajana Radujković, Krystal Randall, Amanda Ratier Backes, Sabine Remmele, Wolfram Remmers, David Renault, Anita C. Risch, Christian Rixen, Sharon A. Robinson, Bjorn J. M. Robroek, Adrian V. Rocha, Christian Rossi, Graziano Rossi, Olivier Roupsard, Alexey V. Rubtsov, Patrick Saccone, Clotilde Sagot, Jhonatan Sallo Bravo, Cinthya C. Santos, Judith M. Sarneel, Tobias Scharnweber, Jonas Schmeddes, Marius Schmidt, Thomas Scholten, Max Schuchardt, Naomi Schwartz, Tony Scott, Julia Seeber, Ana Cristina Segalin de Andrade, Tim Seipel, Philipp Semenchuk, Rebecca A. Senior, Josep M. Serra-Diaz, Piotr Sewerniak, Ankit Shekhar, Nikita V. Sidenko, Lukas Siebicke, Laura Siegwart Collier, Elizabeth Simpson, David P. Siqueira, Zuzana Sitková, Johan Six, Marko Smiljanic, Stuart W. Smith, Sarah Smith-Tripp, Ben Somers, Mia Vedel Sørensen, José João L. L. Souza, Bartolomeu Israel Souza, Arildo Souza Dias, Marko J. Spasojevic, James D. M. Speed, Fabien Spicher, Angela Stanisci, Klaus Steinbauer, Rainer Steinbrecher, Michael Steinwandter, Michael Stemkovski, Jörg G. Stephan, Christian Stiegler, Stefan Stoll, Martin Svátek, Miroslav Svoboda, Torbern Tagesson, Andrew J. Tanentzap, Franziska Tanneberger, Jean Paul Theurillat, Haydn J. D. Thomas, Andrew D. Thomas, Katja Tielbörger, Marcello Tomaselli, Urs Albert Treier, Mario Trouillier, Pavel Dan Turtureanu, Rosamond Tutton, Vilna A. Tyystjärvi, Masahito Ueyama, Karol Ujházy, Mariana Ujházyová, Domas Uogintas, Anastasiya V. Urban, Josef Urban, Marek Urbaniak, Tudor Mihai Ursu, Francesco Primo Vaccari, Stijn Van de Vondel, Liesbeth van den Brink, Maarten Van Geel, Vigdis Vandvik, Pieter Vangansbeke, Andrej Varlagin, G. F. Veen, Elmar Veenendaal, Susanna E. Venn, Hans Verbeeck, Erik Verbruggen, Frank G. A. Verheijen, Luis Villar, Luca Vitale, Pascal Vittoz, Maria Vives-Inglá, Jonathan von Oppen, Josefine Walz, Runxi Wang, Yifeng Wang, Robert G. Way, Ronja E. M. Wedegärtner, Robert Weigel, Jan Wild, Matthew Wilkinson, Martin Wilmking, Lisa Wingate, Manuela Winkler, Sonja Wipf, Georg Wohlfahrt, Georgios Xenakis, Yan Yang, Zicheng Yu, Kailiang Yu, Florian Zellweger, Jian Zhang, Zhaochen Zhang, Peng Zhao, Klaudia Ziemblińska, Reiner Zimmermann, Shengwei Zong, Viacheslav I. Zyryanov, Ivan Nijs, and Jonathan Lenoir. 2022. “Global Maps of Soil Temperature.” *Global Change Biology* 28(9):3110–44.

- Lembrechts, Jonas J., Aníbal Pauchard, Jonathan Lenoir, Martín A. Nuñez, Charly Geron, Arne Ven, Pablo Bravo-Monasterio, Ernesto Teneb, Ivan Nijs, and Ann Milbau. 2016. “Disturbance Is the Key to Plant Invasions in Cold Environments.” *Proceedings of the National Academy of Sciences of the United States of America* 113(49):14061–66.
- Lüdecke, Daniel, Mattan Ben-Shachar, Indrajeet Patil, Philip Waggoner, and Dominique Makowski. 2021. “Performance: An R Package for Assessment, Comparison and Testing of Statistical Models.” *Journal of Open Source Software* 6(60):3139.
- McDougall, Keith L., Jonas Lembrechts, Lisa J. Rew, Sylvia Haider, Lohengrin A. Cavieres, Christoph Kueffer, Ann Milbau, Bridgett J. Naylor, Martin A. Nuñez, Anibal Pauchard, Tim Seipel, Karina L. Speziale, Genevieve T. Wright, and Jake M. Alexander. 2018. “Running off the Road: Roadside Non-Native Plants Invading Mountain Vegetation.” *Biological Invasions* 1–13.
- Müllerová, Jana, Michaela Vítková, and Ondřej Vítek. 2011. “The Impacts of Road and Walking Trails upon Adjacent Vegetation: Effects of Road Building Materials on Species Composition in a Nutrient Poor Environment.” *Science of the Total Environment* 409(19):3839–49.
- Neuenkamp, Lena, Mari Moora, Maarja Öpik, John Davison, Maret Gerz, Minna Männistö, Teele Jairus, Martti Vasar, and Martin Zobel. 2018. “The Role of Plant Mycorrhizal Type and Status in Modulating the Relationship between Plant and Arbuscular Mycorrhizal Fungal Communities.” *New Phytologist* 220(4):1236–47.
- O’Farrell, P. J. and S. J. Milton. 2006. “Road Verge and Rangeland Plant Communities in the Southern Karoo: Exploring What Influences Diversity, Dominance and Cover.” *Biodiversity and Conservation* 15(3):921–38.
- Öpik, M., A. Vanatoa, E. Vanatoa, M. Moora, J. Davison, J. M. Kalwij, Ü. Reier, and M. Zobel. 2010. “The Online Database MaarjAM Reveals Global and Ecosystemic Distribution Patterns in Arbuscular Mycorrhizal Fungi (Glomeromycota).” *New Phytologist* 188(1):223–41.
- Phillips, Richard P., Edward Brzostek, and Meghan G. Midgley. 2013. “The Mycorrhizal-Associated Nutrient Economy : A New Framework for Predicting Carbon – Nutrient Couplings in Temperate Forests.” *New Phytologist* 199(1):41–51.
- Pollnac, Fredric, Tim Seipel, Charles Repath, and Lisa J. Rew. 2012. “Plant Invasion at Landscape and Local Scales along Roadways in the Mountainous Region of the Greater Yellowstone Ecosystem.” *Biological Invasions* 14(8):1753–63.
- Pringle, Anne, James D. Bever, Monique Gardes, Jeri L. Parrent, Matthias C. Rillig, and John N. Klironomos. 2009. “Mycorrhizal Symbioses and Plant Invasions.” *Annual Review of Ecology, Evolution, and Systematics* 40(1):699–715.
- R Core Team. 2021. “R: A Language and Environment for Statistical Computing.”
- Rahbek, Carsten, Michael K. Borregaard, Robert K. Colwell, Bo Dalsgaard, Ben G. Holt, Naia Morueta-Holme, David Nogues-Bravo, Robert J. Whittaker, and Jon Fjeldsa. 2019. “Humboldt’s Enigma: What Causes Global Patterns of Mountain Biodiversity?” *Science* 365(6458):1108–13.
- Read, David J., Jonathan R. Leake, and Jesus Perez-moreno. 2004. “Mycorrhizal Fungi as Drivers of Ecosystem Processes in Heathland and Boreal Forest Biomes 1.” *Canadian Journal of Botany* 82(8):1243–63.
- Schnoor, Tim Krone, Ylva Lekberg, Soren Rosendahl, and Pal Axel Olsson. 2011. “Mechanical Soil Disturbance as a Determinant of Arbuscular Mycorrhizal Fungal Communities in Semi-Natural Grassland.” *Mycorrhiza* 21(3):211–20.

Segre, Hila, Niv DeMalach, Zalmen Henkin, and Ronen Kadmon. 2016. “Quantifying Competitive Exclusion and Competitive Release in Ecological Communities: A Conceptual Framework and a Case Study.” *PLoS ONE* 11(8):1–14.

Smith, Sally E. and David J. Read. 2010. *Mycorrhizal Symbiosis* . Academic press.

Soudzilovskaia, Nadejda A., Stijn Vaessen, Milagros Barcelo, Jinhong He, Saleh Rahimlou, Mark C. Brundrett, Sofia I. F. Gomes, Vincent Merckx, and Leho Tedersoo. 2020. “FungalRoot : Global Online Database of Plant Mycorrhizal Associations.” *New Phytologist* 227(3):955–66.

Soudzilovskaia, Nadejda A., Stijn Vaessen, Maarten van’t Zelfde, and Niels Raes. 2017. “Global Patterns of Mycorrhizal Distribution and Their Environmental Drivers.” Pp. 223–35 in *Biogeography of mycorrhizal symbiosis* . Springer.

Sulman, Benjamin N., Edward R. Brzostek, Chiara Medici, Elena Shevliakova, Duncan N. L. Menge, and Richard P. Phillips. 2017. “Feedbacks between Plant N Demand and Rhizosphere Priming Depend on Type of Mycorrhizal Association.” *Ecology Letters*20(8):1043–53.

Wagg, Cameron, S. Franz Bender, Franco Widmer, and Marcel G. A. Van Der Heijden. 2014. “Soil Biodiversity and Soil Community Composition Determine Ecosystem Multifunctionality.” *Proceedings of the National Academy of Sciences of the United States of America*111(14):5266–70.

Wang, B. and Y. L. Qiu. 2006. “Phylogenetic Distribution and Evolution of Mycorrhizas in Land Plants.” *Mycorrhiza* 16(5):299–363.

Yang, Qiang, Juli Carrillo, Hongyue Jin, Lei Shang, Stephen M. Hovick, Somereet Nijjer, Christopher A. Gabler, Bo Li, and Evan Siemann. 2013. “Plant-Soil Biota Interactions of an Invasive Species in Its Native and Introduced Ranges: Implications for Invasion Success.” *Soil Biology and Biochemistry* 65:78–85.

Zuur, Alain F., Elena N. Ieno, Neil J. Walker, Anatoly A. Saveliev, and Graham M. Smith. 2009. *Mixed Effects Models and Extensions in Ecology with R* . First. New-York: Springer-Verlag New York.

Tables and Figures

Table 1: Selected models explaining percentage of vegetation cover associated with a certain mycorrhizal type: Coefficients and their p-values (between brackets) for each type of mycorrhizal association: Arbuscular Mycorrhizas (AM), Ecto-Mycorrhizas (EcM), Ericoid Mycorrhizas (ErM) and Non-Mycorrhizal (NM). Model selection was performed by selecting all models with a $\Delta AICc < 2$ from the best model (i.e. Model 1). Explanatory variables were soil temperature (Temp), disturbance (Dist) as the three-level plot with 1: 52 to 102 m from the road, 2: 2 to 52 m from the road, and 3: 0 to 2 m from the road, and the interaction between temperature and disturbance. Green and orange fields are respectively positive and negative correlations. Gray fields represent explanatory variables that were not retained in a given model.

Model	Model	Intercept	Temp	Dist	Dist* Temp
AM	1	1.6177 (p<0.001)	0.0132 (p=0.178)	0.3909 (p=0.004)	-0.0293 (p<0.001)
EcM	1	-3.0698 (p<0.001)	-0.0377 (p<0.001)	-0.2520 (p=0.010)	
ErM	1	-4.1528 (p<0.001)	-0.0165 (p=0.060)	-0.2671 (p=0.003)	0.0111 (p=0.098)
	2	-4.1141 (p<0.001)	-0.0378 (p<0.001)		
NM	1	-2.3977 (p<0.001)	0.0079 (p=0.412)	-0.0022 (p=0.978)	0.0156 (p=0.025)
	2	-2.3341 (p<0.001)		0.1103 (p=0.130)	
	3	-2.2948 (p<0.001)	-0.0051 (p=0.498)	0.1104 (p=0.126)	

Table 2: Partial pooling results showing variation of mycorrhizal type cover responses across regions: Region-specific coefficients for each type of mycorrhizal association: Arbuscular Mycorrhizas (AM), Ecto-Mycorrhizas (EcM), Ericoid Mycorrhizas (ErM) and Non-Mycorrhizal (NM) across all regions where a given mycorrhizal type was present. Explanatory variables were mean annual soil temperature (Temp),

disturbance (Dist) as the three-level plot with 1: 52 to 102 m from the road, 2: 2 to 52 m from the road, and 3: 0 to 2 m from the road and the interaction between disturbance and temperature. Green and orange fields are respectively positive and negative correlations. Gray fields are factors that were not included in a given model following the results of model selection (see Table S1). Region abbreviations are as follows: ARC for Argentina, ARM for Armenia, AUN for Australia, CHE for Switzerland, CLC for Chile, CNN for China, TEN for Tenerife, IND for India, MTN for Montana, NOR for Norway and ORE for Oregon.

<i>AM</i>	Intercept	Temp	Dist	Temp*Dist	<i>ErM</i>	Intercept	Temp	Dist
Region					Region			
ARC	1.78	-0.01	0.00	0.03	AUN	-3.01	-0.03	-0.36
ARM	2.28	0.00	0.25	0.01	CHE	-3.01	-0.03	-0.32
AUN	2.11	-0.06	0.58	0.01	CNN	-3.08	-0.05	-0.18
CHE	1.19	0.04	0.28	0.01	NOR	-1.33	-0.10	-0.50
CLC	2.46	-0.19	0.10	0.12	ORE	-1.89	-0.11	-0.20
CNN	1.05	0.06	0.52	0.01				
TEN	0.09	0.04	1.16	0.04				
IND	1.86	-0.03	0.13	0.03	<i>NM</i>			
MTN	2.40	-0.03	0.62	0.04	ARC	-2.00	0.00	0.16
NOR	-0.15	0.06	0.47	-0.06	ARM	-2.02	-0.12	0.26
ORE	-0.54	0.23	0.39	0.04	AUN	-1.87	-0.12	-0.26
<i>EcM</i>					CHE	-1.73	-0.06	0.02
AUN	-3.54	0.16	-0.45		CLC	-3.89	0.52	-0.78
CHE	-2.25	-0.05	-0.17		CNN	-2.26	-0.08	0.25
CNN	-1.74	0.06	-0.10		TEN	-1.24	-0.19	0.39
TEN	0.32	-0.13	-0.62		IND	-2.07	0.05	-0.14
MTN	-2.84	-0.03	-0.35		MTN	-2.85	0.02	-0.45
NOR	-0.94	0.00	-0.05		NOR	-2.02	-0.06	0.19
ORE	-0.57	-0.17	-0.14		ORE	-0.90	-0.21	0.07

Table 3: Selected models explaining percentage of non-native plant species cover amongst roadside (a) and adjacent (b) vegetation for the different mycorrhizal types: Coefficients and their p-values (between brackets) for each type of mycorrhizal associations: Arbuscular Mycorrhizas (AM), Ecto-Mycorrhizas (EcM), Ericoid Mycorrhizas (ErM) and Non-Mycorrhizal (NM). Model selection was performed by selecting all models with a $\Delta AICc < 2$ from the best model (i.e. Model 1) (in each case, there were two such models). Explanatory variables were mean annual soil temperature ('Temp'), the percentage cover of native vegetation associated to each given mycorrhizal type ('% cover') and the interaction between these two factors. Green and orange fields are respectively positive and negative correlations. Gray fields represent explanatory variables that were not retained in a given model.

a) *Roadside non-native plant species*

Model	Model	Intercept	% Cover	Temp	% Cover*Temp
AM	1	-3.29 (p<0.001)	0.60 (p=0.003)	0.06 (p<0.001)	
	2	-3.09 (p<0.001)	0.34 (p=0.279)	0.03 (p=0.212)	0.03 (p=0.305)
EcM	1	-2.82 (p<0.001)	-0.39 (p=0.364)	0.07 (p<0.001)	-0.02 (p=0.609)
	2	-2.81 (p<0.001)	-0.57 (p=0.010)	0.07 (p<0.001)	
ErM	1	-2.87 (p<0.001)	-0.54 (p=0.050)	0.07 (p<0.001)	
	2	-2.90 (p<0.001)	-0.04 (p=0.920)	0.07 (p<0.001)	-0.12 (p=0.139)
NM	1	-2.99 (p<0.001)	0.65 (p=0.098)	0.06 (p<0.001)	
	2	-3.02 (p<0.001)	1.09 (p=0.160)	0.08 (p<0.001)	-0.06 (p=0.517)

b) *Adjacent vegetation non-native plant species*

Model	Model	Intercept	% Cover	Temp	% Cover*Temp
AM	1	-3.10 (p<0.001)	0.34 (p=0.279)	0.03 (p=0.212)	0.03 (p=0.305)
	2	-3.29 (p<0.001)	0.60 (p=0.003)	0.06 (p<0.001)	
EcM	1	-2.81 (p<0.001)	-0.58 (p=0.014)	0.06 (p<0.001)	
	2	-2.83 (p<0.001)	-0.39 (p=0.364)	0.07 (p<0.001)	-0.02 (p=0.609)
ErM	1	-2.91 (p<0.001)	-0.04 (p=0.920)	0.07 (p<0.001)	-0.12 (p=0.139)
	2	-2.87 (p<0.001)	-0.54 (p=0.050)	0.07 (p<0.001)	
NM	1	-2.98 (p<0.001)	0.65 (p=0.098)	0.07 (p<0.001)	
	2	-3.03 (p<0.001)	1.08 (p=0.160)	0.08 (p<0.001)	-0.06 (p=0.517)

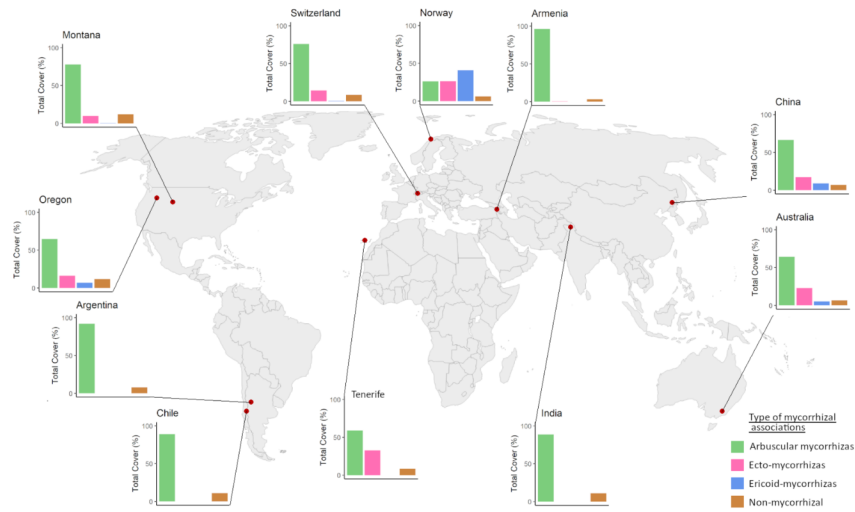


Figure 1: Map of mycorrhizal type associations in the 11 studies mountain regions. Percentage of total vegetation cover for plants associated with arbuscular mycorrhizas, ecto-mycorrhizas and ericoid-mycorrhizas, as well as non-mycorrhizal plants. For each region the total cover of plant species was recorded along multiple mountain roads as well as in the adjacent vegetation, plotted here are only the results from this adjacent vegetation independent of the road effect.

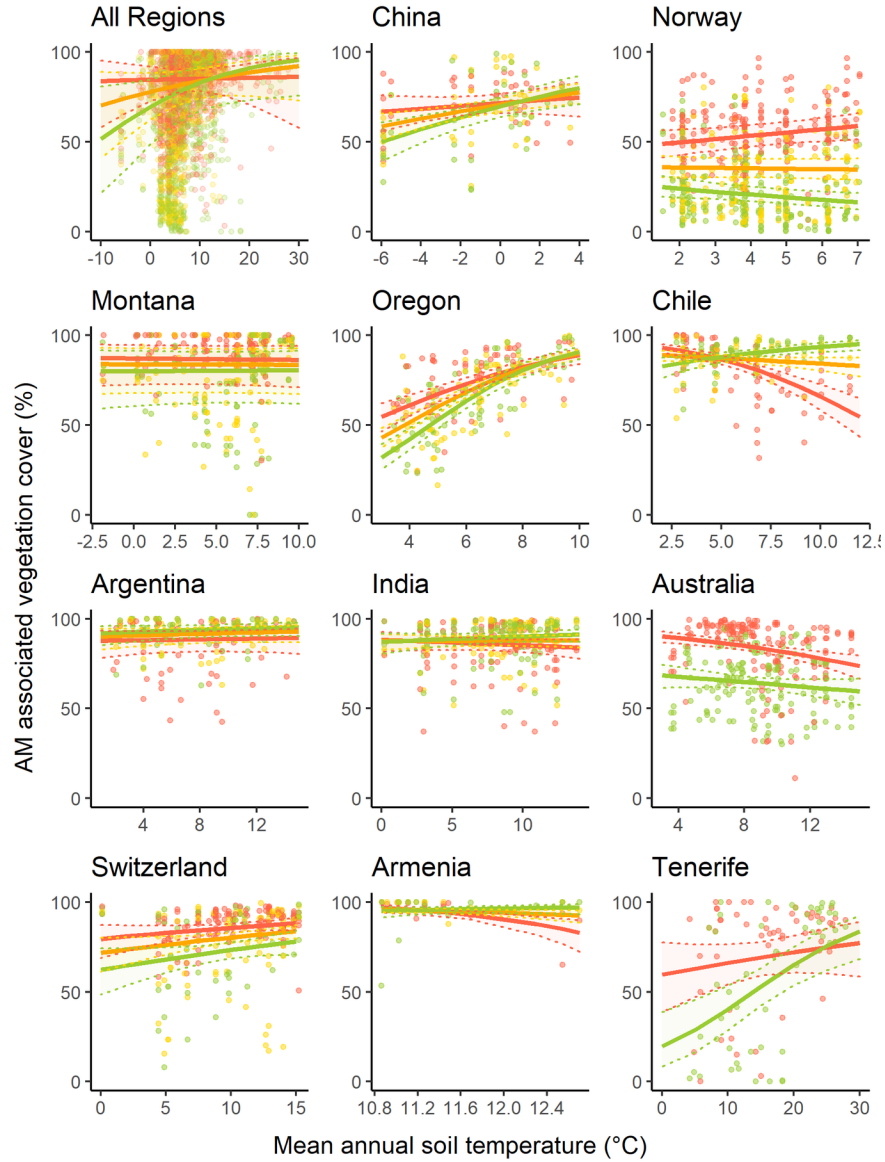


Figure 2: Effect of road disturbance on the proportion of total vegetation cover associated with Arbuscular Mycorrhizal (AM) fungi across regions and along temperature gradients. AM vegetation cover was measured along roadsides from 0 to 2 m (red) and in the adjacent vegetation both from 2 to 52 m away from the road (orange) and from 52 to 102 m (green). Mean annual soil temperature was extracted from global maps of soil temperature at a 1 km resolution. The regions are plotted in order from lowest to highest average yearly soil temperature and confidence intervals are represented by the dotted lines. Trendlines come from a partial pooling approach on a linear mixed model (see Methods).

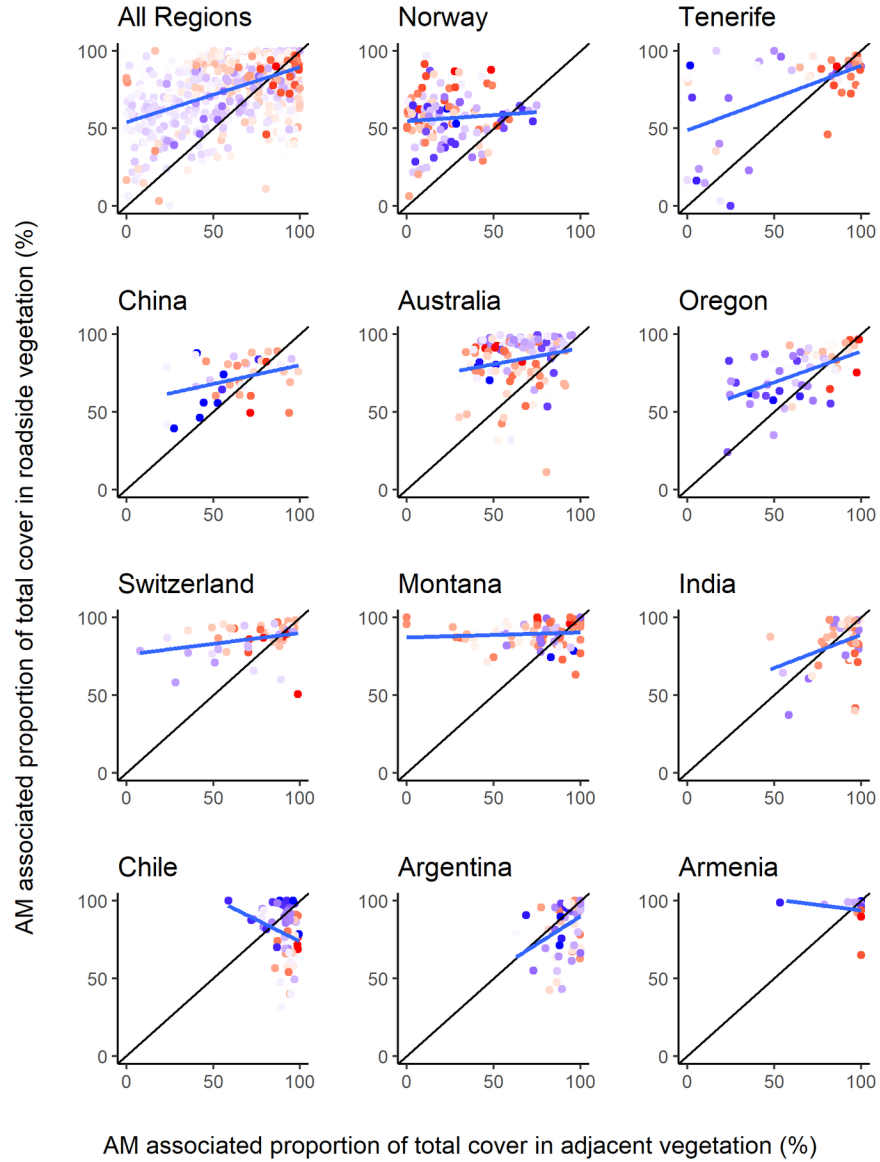


Figure 3: Pairwise comparison of arbuscular mycorrhizal (AM) proportions of total vegetation cover between disturbed (roadside plot) and undisturbed (adjacent plot) vegetation. For each region, every individual transect along the studied mountain roads was plotted as the intersection between the percentage of AM vegetation cover in 2×50 m plots parallel to the road (0 m to 2 m from the road) and in 2×50 m plots of adjacent vegetation perpendicular to the roadside (52 to 102 m from the road). Points above the identity line correspond to transects in which the AM proportion of the total vegetation cover was higher along the roadside compared to the proportion in the adjacent vegetation. The blue regression line was plotted using the results of linear models, highlighting that the relationships between AM vegetation cover proportion in the disturbed and undisturbed vegetation are different from what would be expected if disturbance had no effect (i.e., relative to the 1/1-line). Regions are ordered from lowest total proportion of AM vegetation cover (Norway) to highest (Armenia) and points are colored from low temperatures (blue) to high temperatures (red) scaled within region.

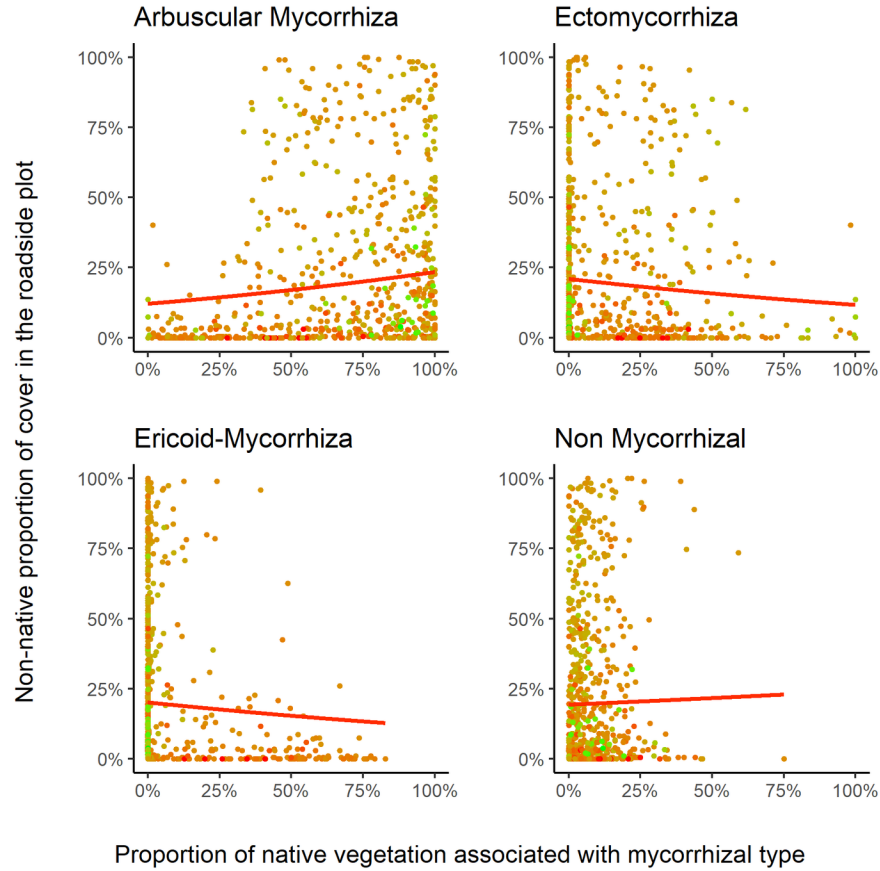


Figure 4: Correlation between native mycorrhizal associations and cover of non-native species. For each mycorrhizal-type association, the proportion of the vegetation cover in roadside plots (0 m to 2 m from the road) which was of non-native origin was plotted against the proportion of the native vegetation in plots perpendicular and away from to the road (52 m to 102 m from the road) which was associated with each mycorrhizal type. Each dot represents an individual pair of plots. Regression lines were plotted using the results of generalized linear models (see methods and Table 3) and individual dots were colored according to elevation from low elevation (green) to high elevation (red).